

Datasheet for ABIN2856257
anti-TLE2 antibody (C-Term)



[Go to Product page](#)

2 Images

Overview

Quantity:	100 µL
Target:	TLE2
Binding Specificity:	C-Term
Reactivity:	Human
Host:	Rabbit
Clonality:	Polyclonal
Conjugate:	This TLE2 antibody is un-conjugated
Application:	Western Blotting (WB), Immunofluorescence (IF), Immunocytochemistry (ICC)

Product Details

Immunogen:	Recombinant protein encompassing a sequence within the C-terminus region of human TLE2. The exact sequence is proprietary.
Isotype:	IgG
Cross-Reactivity:	Mouse (Murine), Rat (Rattus), Xenopus laevis, Zebrafish (Danio rerio), Xenopus tropicalis
Cross-Reactivity (Details):	Mouse (97 %), Rat (96 %), Xenopus laevis (89 %), Zebrafish (89 %), Xenopus tropicalis (90 %)
Characteristics:	Rabbit Polyclonal antibody to TLE2 (transducin-like enhancer of split 2 (E(sp1) homolog, Drosophila)) TLE2 antibody [C2C3], C-term
Purification:	Purified by antigen-affinity chromatography.

Target Details

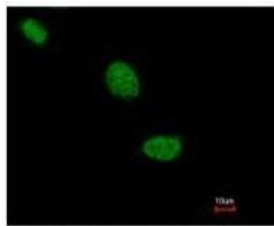
Target:	TLE2
Alternative Name:	TLE2 (TLE2 Products)
Background:	Cellular Localization: Nucleus
Molecular Weight:	80 kDa
Gene ID:	7089
Pathways:	WNT Signaling

Application Details

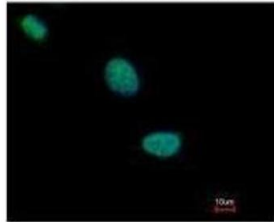
Application Notes:	Suggested dilution Reference ICC/IF 1:100-1:1000* Western blot 1:500-1:3000* Not tested in other applications. *Optimal dilutions/concentrations should be determined by the researcher.Suggested dilutionReferenceICC/IF1:100-1:1000* Western blot1:500-1:3000*
Comment:	Positive Control: H1299
Restrictions:	For Research Use only

Handling

Format:	Liquid
Concentration:	0.75 mg/mL
Buffer:	0.1M Tris, 0.1M Glycine, 10 % Glycerol (pH 7). 0.01 % Thimerosal was added as a preservative.
Preservative:	Thimerosal (Merthiolate)
Precaution of Use:	This product contains Thimerosal (Merthiolate): a POISONOUS AND HAZARDOUS SUBSTANCE which should be handled by trained staff only.
Storage:	-20 °C
Storage Comment:	Keep as concentrated solution. Aliquot and store at -20°C or below. Avoid multiple freeze-thaw cycles.

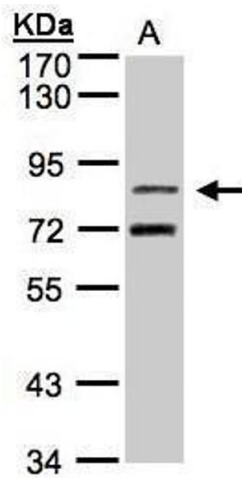


Costained with Hoechst 33342



Immunofluorescence

Image 1. ICC/IF Image Immunofluorescence analysis of paraformaldehyde-fixed HeLa, using TLE2, antibody at 1:500 dilution.



Western Blotting

Image 2. WB Image Sample(30 µg of whole cell lysate) A:H1299 7.5% SDS PAGE antibody diluted at 1:1500