

Datasheet for ABIN2856259

anti-GLRA1 antibody**2** Images[Go to Product page](#)

Overview

Quantity:	100 µL
Target:	GLRA1
Reactivity:	Human
Host:	Rabbit
Clonality:	Polyclonal
Conjugate:	This GLRA1 antibody is un-conjugated
Application:	Western Blotting (WB), Immunofluorescence (IF), Immunocytochemistry (ICC), Immunohistochemistry (Paraffin-embedded Sections) (IHC (p))

Product Details

Immunogen:	Recombinant protein encompassing a sequence within the center region of human Glycine Receptor alpha 1. The exact sequence is proprietary.
Isotype:	IgG
Cross-Reactivity:	Human, Rat
Characteristics:	Rabbit Polyclonal antibody to Glycine Receptor alpha1 (glycine receptor, alpha 1) Glycine Receptor alpha1 antibody [N1C1]
Purification:	Purified by antigen-affinity chromatography.

Target Details

Target:	GLRA1
Alternative Name:	glycine receptor alpha 1 (GLRA1 Products)

Target Details

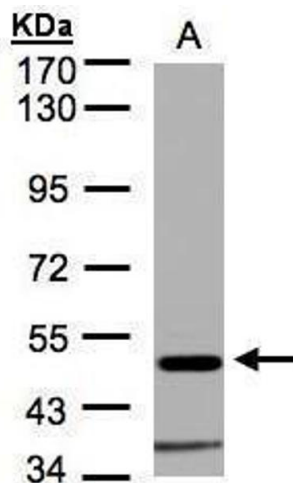
Background:	<p>The protein encoded by this gene is a subunit of a pentameric inhibitory glycine receptor. The receptor mediates postsynaptic inhibition in the central nervous system. Defects in this gene are a cause of startle disease (STHE), also known as hereditary hyperekplexia or congenital stiff-person syndrome. Two transcript variants encoding different isoforms have been found for this gene.</p> <p>Cellular Localization: Cell junction , synapse , postsynaptic cell membrane, Multi-pass membrane protein , Cell membrane, Multi-pass membrane protein</p>
Molecular Weight:	53 kDa
Gene ID:	2741
UniProt:	P23415
Pathways:	Synaptic Membrane

Application Details

Application Notes:	WB: 1:500-1:3000. ICC/IF: 1:100-1:1000. IHC-P: 1:100-1:1000. Optimal dilutions/concentrations should be determined by the researcher. Not tested in other applications.
Comment:	Positive Control: HeLaS3
Restrictions:	For Research Use only

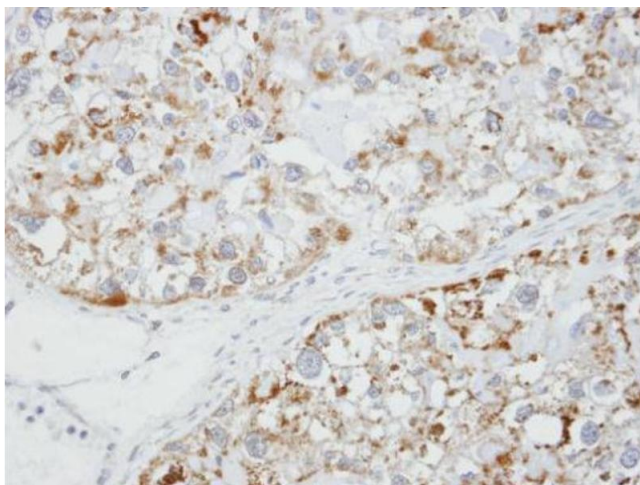
Handling

Format:	Liquid
Concentration:	0.43 mg/mL
Buffer:	0.1M Tris-Glycine (pH 7), 10 % Glycerol, 0.01 % Thimerosal
Preservative:	Thimerosal (Merthiolate)
Precaution of Use:	This product contains Thimerosal (Merthiolate): a POISONOUS AND HAZARDOUS SUBSTANCE which should be handled by trained staff only.
Storage:	4 °C,-20 °C
Storage Comment:	Store as concentrated solution. Centrifuge briefly prior to opening vial. For short-term storage (1-2 weeks), store at 4°C. For long-term storage, aliquot and store at -20°C or below. Avoid multiple freeze-thaw cycles.



Western Blotting

Image 1. WB Image Sample(30 µg of whole cell lysate)
A:HeLa S3, 7.5% SDS PAGE antibody diluted at 1:1500



Immunohistochemistry

Image 2. IHC-P Image Immunohistochemical analysis of paraffin-embedded OVCA xenograft, using Glycine Receptor alpha1, antibody at 1:100 dilution.