

Datasheet for ABIN2856260
anti-ATG4D antibody (Center)[Go to Product page](#)

2 Images

Overview

Quantity:	100 µL
Target:	ATG4D
Binding Specificity:	Center
Reactivity:	Human, Mouse
Host:	Rabbit
Clonality:	Polyclonal
Conjugate:	This ATG4D antibody is un-conjugated
Application:	Immunohistochemistry (Paraffin-embedded Sections) (IHC (p))

Product Details

Immunogen:	Recombinant protein encompassing a sequence within the center region of human ATG4D. The exact sequence is proprietary.
Isotype:	IgG
Cross-Reactivity:	Cow (Bovine), Pig (Porcine), Rat (Rattus)
Cross-Reactivity (Details):	Mouse (95 %), Pig (97 %), Rat (95 %), Bovine (98 %)
Characteristics:	Rabbit polyclonal antibody to ATG4D (ATG4 autophagy related 4 homolog D (S. cerevisiae)) ATG4D antibody [N3C3]
Purification:	Purified by antigen-affinity chromatography.

Target Details

Target:	ATG4D
Alternative Name:	ATG4D (ATG4D Products)
Background:	<p>Autophagy is the process by which endogenous proteins and damaged organelles are destroyed intracellularly. Autophagy is postulated to be essential for cell homeostasis and cell remodeling during differentiation, metamorphosis, non-apoptotic cell death, and aging. Reduced levels of autophagy have been described in some malignant tumors, and a role for autophagy in controlling the unregulated cell growth linked to cancer has been proposed. This gene encodes a member of the autophagin protein family. The encoded protein is also designated as a member of the C-54 family of cysteine proteases.</p> <p>Cellular Localization: Cytoplasm</p>
Molecular Weight:	53 kDa
Gene ID:	84971
Pathways:	Autophagy

Application Details

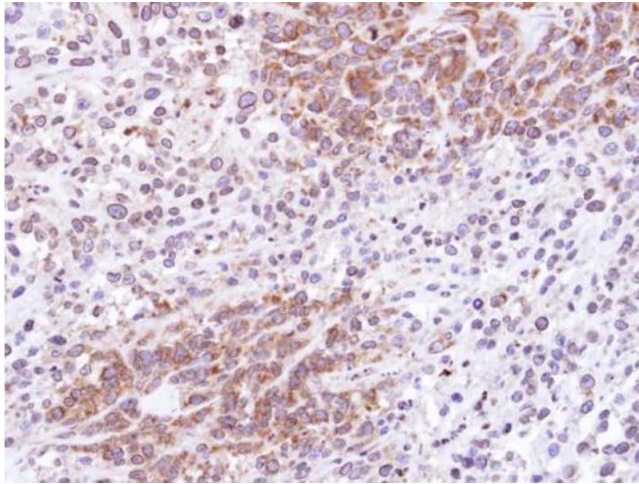
Application Notes:	<p>Suggested dilution Reference IHC (Formalin-fixed paraffin-embedded sections) 1:100-1:1000* Not tested in other applications. *Optimal dilutions/concentrations should be determined by the researcher.Suggested dilutionReferenceIHC (Formalin-fixed paraffin-embedded sections)1:100-1:1000*</p>
Restrictions:	For Research Use only

Handling

Format:	Liquid
Concentration:	0.52 mg/mL
Buffer:	1XPBS, 1 % BSA, 20 % Glycerol (pH 7). 0.01 % Thimerosal was added as a preservative.
Preservative:	Thimerosal (Merthiolate)
Precaution of Use:	This product contains Thimerosal (Merthiolate): a POISONOUS AND HAZARDOUS SUBSTANCE which should be handled by trained staff only.
Storage:	-20 °C
Storage Comment:	Keep as concentrated solution. Aliquot and store at -20°C or below. Avoid multiple freeze-thaw

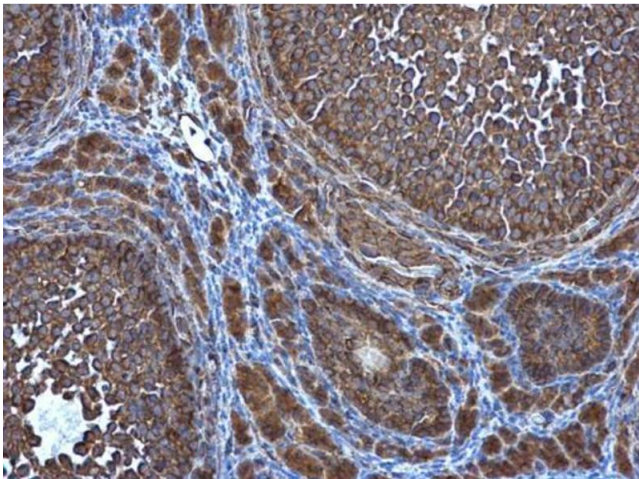
cycles.

Images



Immunohistochemistry

Image 1. IHC-P Image Immunohistochemical analysis of paraffin-embedded SAS xenograft , using ATG4D, antibody at 1:100 dilution.



Immunohistochemistry

Image 2. IHC-P Image ATG4D antibody [N3C3] detects ATG4D protein at cytoplasm in mouse ovary by immunohistochemical analysis. Sample: Paraffin-embedded mouse ovary. ATG4D antibody [N3C3] , diluted at 1:500.