



Datasheet for ABIN2856264
anti-MEP1A antibody



[Go to Product page](#)

1 Image

Overview

Quantity:	100 µL
Target:	MEP1A
Reactivity:	Human
Host:	Rabbit
Clonality:	Polyclonal
Conjugate:	This MEP1A antibody is un-conjugated
Application:	Western Blotting (WB)

Product Details

Immunogen:	Recombinant protein encompassing a sequence within the center region of human Meprin alpha. The exact sequence is proprietary.
Isotype:	IgG
Cross-Reactivity:	Human
Characteristics:	Rabbit polyclonal antibody to Meprin A alpha (meprin A, alpha (PABA peptide hydrolase)) Meprin alpha antibody [N3C2], Internal
Purification:	Purified by antigen-affinity chromatography.

Target Details

Target:	MEP1A
Alternative Name:	meprin A subunit alpha (MEP1A Products)

Target Details

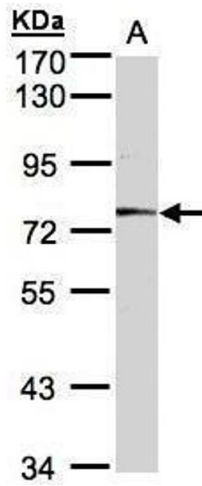
Background:	Cellular Localization: Membrane, Single-pass type I membrane protein
Molecular Weight:	84 kDa
Gene ID:	4224
UniProt:	Q16819

Application Details

Application Notes:	WB: 1:500-1:3000. Optimal dilutions/concentrations should be determined by the researcher. Not tested in other applications.
Comment:	Positive Control: A431
Restrictions:	For Research Use only

Handling

Format:	Liquid
Concentration:	1 mg/mL
Buffer:	0.1M Tris-Glycine (pH 7), 10 % Glycerol, 0.01 % Thimerosal
Preservative:	Thimerosal (Merthiolate)
Precaution of Use:	This product contains Thimerosal (Merthiolate): a POISONOUS AND HAZARDOUS SUBSTANCE which should be handled by trained staff only.
Storage:	4 °C,-20 °C
Storage Comment:	Store as concentrated solution. Centrifuge briefly prior to opening vial. For short-term storage (1-2 weeks), store at 4°C. For long-term storage, aliquot and store at -20°C or below. Avoid multiple freeze-thaw cycles.



Western Blotting

Image 1. WB Image Sample(30 ug whole cell lysate)
A:A431, 7.5% SDS PAGE antibody diluted at 1:1000