

Datasheet for ABIN2856267

anti-CPE antibody**3** Images[Go to Product page](#)

Overview

Quantity:	100 µL
Target:	CPE
Reactivity:	Human
Host:	Rabbit
Clonality:	Polyclonal
Conjugate:	This CPE antibody is un-conjugated
Application:	Western Blotting (WB), Immunohistochemistry (Paraffin-embedded Sections) (IHC (p))

Product Details

Immunogen:	Recombinant protein encompassing a sequence within the center region of human Carboxypeptidase E. The exact sequence is proprietary.
Isotype:	IgG
Cross-Reactivity:	Human, Mouse
Characteristics:	Rabbit Polyclonal antibody to Carboxypeptidase E (carboxypeptidase E) Carboxypeptidase E antibody [N2C2], Internal
Purification:	Purified by antigen-affinity chromatography.

Target Details

Target:	CPE
Alternative Name:	carboxypeptidase E (CPE Products)

Target Details

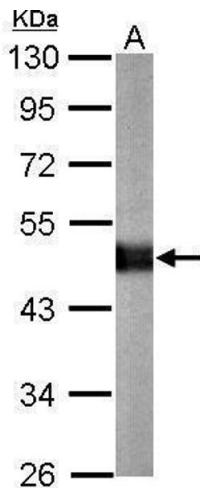
Background:	<p>This gene encodes a carboxypeptidase that cleaves C-terminal amino acid residues and is involved in the biosynthesis of peptide hormones and neurotransmitters, including insulin. It is a peripheral membrane protein. The protein specifically binds regulated secretory pathway proteins, including prohormones, but not constitutively secreted proteins. Mutations in this gene are implicated in type II diabetes.</p> <p>Cellular Localization: Secreted</p>
Molecular Weight:	53 kDa
Gene ID:	1363
UniProt:	P16870
Pathways:	Peptide Hormone Metabolism, Synaptic Membrane

Application Details

Application Notes:	WB: 1:500-1:10000. IHC-P: 1:100-1:1000. Optimal dilutions/concentrations should be determined by the researcher. Not tested in other applications.
Comment:	Positive Control: Mouse brain , CPE transfected 293T
Restrictions:	For Research Use only

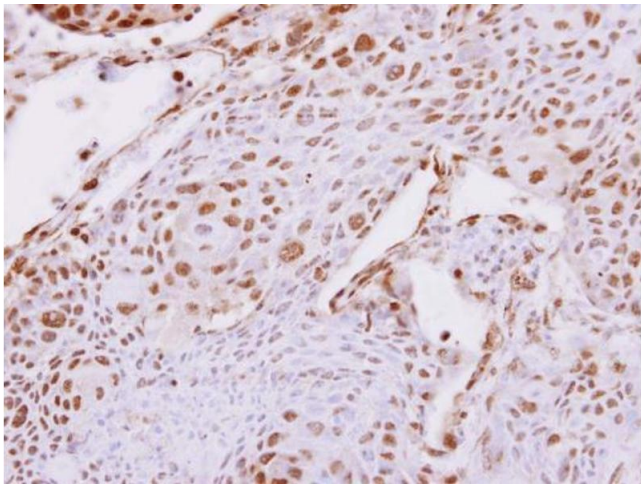
Handling

Format:	Liquid
Concentration:	0.68 mg/mL
Buffer:	0.1M Tris-Glycine (pH 7), 10 % Glycerol, 0.01 % Thimerosal
Preservative:	Thimerosal (Merthiolate)
Precaution of Use:	This product contains Thimerosal (Merthiolate): a POISONOUS AND HAZARDOUS SUBSTANCE which should be handled by trained staff only.
Storage:	4 °C,-20 °C
Storage Comment:	Store as concentrated solution. Centrifuge briefly prior to opening vial. For short-term storage (1-2 weeks), store at 4°C. For long-term storage, aliquot and store at -20°C or below. Avoid multiple freeze-thaw cycles.



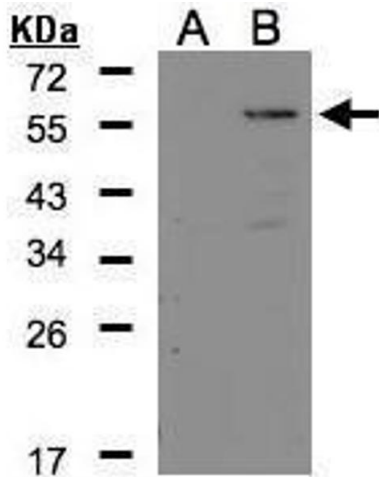
Western Blotting

Image 1. WB Image Sample (20 ug of whole cell lysate) A: mouse brain 10% SDS PAGE antibody diluted at 1:10000



Immunohistochemistry

Image 2. IHC-P Image Carboxypeptidase E antibody [N2C2], Internal detects Carboxypeptidase E protein at nucleus on human breast cancer by immunohistochemical analysis. Sample: Paraffin-embedded breast cancer. Carboxypeptidase E antibody [N2C2], Internal , dilution: 1:500.



Western Blotting

Image 3. WB Image Western Blot analysis of CPE expression in transfected 293T cell line by CPE polyclonal antibody. A: Non-transfected lysate. B: CPE transfected lysate. 12% SDS PAGE antibody diluted at 1:500