



Datasheet for ABIN2856269
anti-SDCCAG3 antibody (Center)



[Go to Product page](#)

2 Images

Overview

Quantity:	100 µL
Target:	SDCCAG3
Binding Specificity:	Center
Reactivity:	Human, Mouse
Host:	Rabbit
Clonality:	Polyclonal
Conjugate:	This SDCCAG3 antibody is un-conjugated
Application:	Western Blotting (WB)

Product Details

Immunogen:	Recombinant protein encompassing a sequence within the center region of human SDCCAG3. The exact sequence is proprietary.
Isotype:	IgG
Cross-Reactivity:	Cow (Bovine)
Cross-Reactivity (Details):	Bovine (89 %)
Characteristics:	Rabbit Polyclonal antibody to SDCCAG3 (serologically defined colon cancer antigen 3) SDCCAG3 antibody [C1C3]
Purification:	Purified by antigen-affinity chromatography.

Target Details

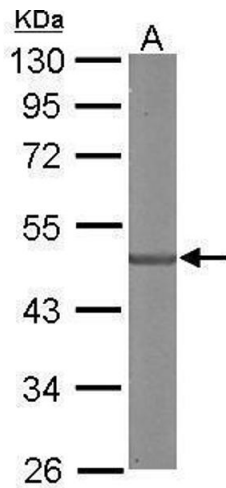
Target:	SDCCAG3
Alternative Name:	SDCCAG3 (SDCCAG3 Products)
Background:	May be involved in modulation of TNF response. May be involved in presentation of TNFRSF1A on the cell surface. Cellular Localization: Cytoplasm
Molecular Weight:	48 kDa
Gene ID:	10807

Application Details

Application Notes:	Suggested dilution Reference Western blot 1:500-1:3000* Not tested in other applications. *Optimal dilutions/concentrations should be determined by the researcher.Suggested dilutionReferenceWestern blot1:500-1:3000*
Comment:	Positive Control: Molt-4 , mouse brain
Restrictions:	For Research Use only

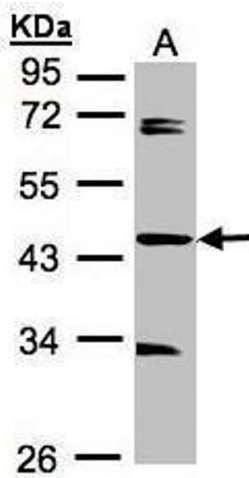
Handling

Format:	Liquid
Concentration:	1 mg/mL
Buffer:	0.1M Tris, 0.1M Glycine, 10 % Glycerol (pH 7). 0.01 % Thimerosal was added as a preservative.
Preservative:	Thimerosal (Merthiolate)
Precaution of Use:	This product contains Thimerosal (Merthiolate): a POISONOUS AND HAZARDOUS SUBSTANCE which should be handled by trained staff only.
Storage:	-20 °C
Storage Comment:	Keep as concentrated solution. Aliquot and store at -20°C or below. Avoid multiple freeze-thaw cycles.



Western Blotting

Image 1. WB Image Sample (50 ug of whole cell lysate) A: mouse brain 10% SDS PAGE antibody diluted at 1:3000



Western Blotting

Image 2. WB Image Sample A: 30µg of MOLT4 whole cell lysate , 10% SDS PAGE antibody diluted at 1:1000