



Datasheet for ABIN2856270
anti-MINPP1 antibody



[Go to Product page](#)

3 Images

Overview

| | |
|--------------|--|
| Quantity: | 100 µL |
| Target: | MINPP1 |
| Reactivity: | Human |
| Host: | Rabbit |
| Clonality: | Polyclonal |
| Conjugate: | This MINPP1 antibody is un-conjugated |
| Application: | Western Blotting (WB), Immunohistochemistry (Paraffin-embedded Sections) (IHC (p)) |

Product Details

| | |
|-------------------|--|
| Immunogen: | Recombinant protein encompassing a sequence within the center region of human MIPP. The exact sequence is proprietary. |
| Isotype: | IgG |
| Cross-Reactivity: | Human, Mouse |
| Characteristics: | Rabbit polyclonal antibody to MIPP (multiple inositol polyphosphate histidine phosphatase, 1) MIPP antibody [C1C3] |
| Purification: | Purified by antigen-affinity chromatography. |

Target Details

| | |
|-------------------|---|
| Target: | MINPP1 |
| Alternative Name: | multiple inositol-polyphosphate phosphatase 1 (MINPP1 Products) |

Target Details

Background: MINPP1 hydrolyzes the abundant metabolites inositol pentakisphosphate and inositol hexakisphosphate and, like PTEN (MIM 601728), has the ability to remove 3-phosphate from inositol phosphate substrates.[supplied by OMIM]

Cellular Localization: Endoplasmic reticulum lumen

Molecular Weight: 55 kDa

Gene ID: 9562

UniProt: [Q9UNW1](#)

Application Details

Application Notes: WB: 1:500-1:3000. IHC-P: 1:100-1:1000. Optimal dilutions/concentrations should be determined by the researcher. Not tested in other applications.

Comment: Positive Control: HeLa

Restrictions: For Research Use only

Handling

Format: Liquid

Concentration: 1 mg/mL

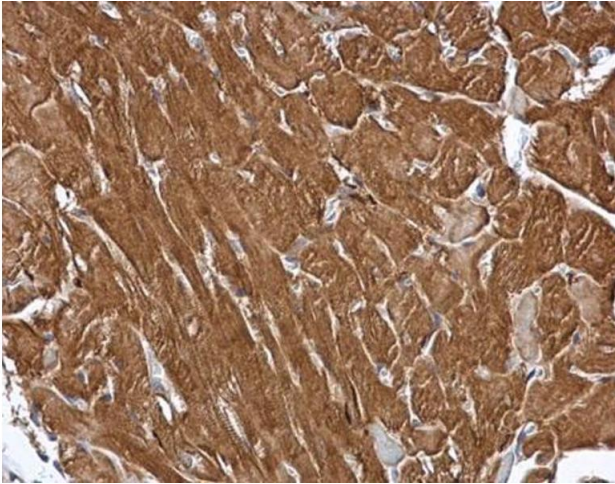
Buffer: 1XPBS (pH 7), 1 % BSA, 20 % Glycerol, 0.01 % Thimerosal

Preservative: Thimerosal (Merthiolate)

Precaution of Use: This product contains Thimerosal (Merthiolate): a POISONOUS AND HAZARDOUS SUBSTANCE which should be handled by trained staff only.

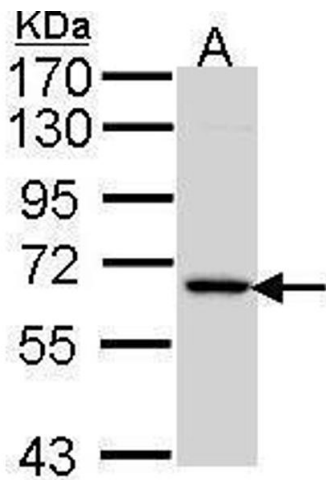
Storage: 4 °C,-20 °C

Storage Comment: Store as concentrated solution. Centrifuge briefly prior to opening vial. For short-term storage (1-2 weeks), store at 4°C. For long-term storage, aliquot and store at -20°C or below. Avoid multiple freeze-thaw cycles.



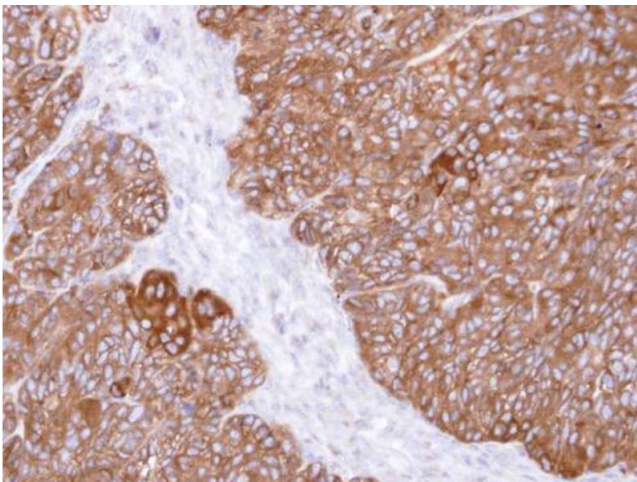
Immunohistochemistry

Image 1. IHC-P Image MIPP antibody [C1C3] detects MIPP protein at cytoplasm in mouse heart by immunohistochemical analysis. Sample: Paraffin-embedded mouse heart. MIPP antibody [C1C3] , diluted at 1:500.



Western Blotting

Image 2. WB Image Sample (30 ug of whole cell lysate) A: HeLa 7.5% SDS PAGE antibody diluted at 1:1000



Immunohistochemistry

Image 3. IHC-P Image Immunohistochemical analysis of paraffin-embedded DLD-1 xenograft , using MIPP , antibody at 1:500 dilution.