

Datasheet for ABIN2856271  
**anti-HSPA6 antibody (Center)**

## 3 Images

[Go to Product page](#)

## Overview

Quantity:	100 µL
Target:	HSPA6
Binding Specificity:	Center
Reactivity:	Human
Host:	Rabbit
Clonality:	Polyclonal
Conjugate:	This HSPA6 antibody is un-conjugated
Application:	Western Blotting (WB), Immunohistochemistry (Paraffin-embedded Sections) (IHC (p)), Immunofluorescence (IF), Immunocytochemistry (ICC)

## Product Details

Immunogen:	Recombinant protein encompassing a sequence within the center region of human HSPA6. The exact sequence is proprietary.
Isotype:	IgG
Characteristics:	Rabbit Polyclonal antibody to HSPA6 (heat shock 70 kDa protein 6 (HSP70B')) HSPA6 antibody [C1C3]
Purification:	Purified by antigen-affinity chromatography.

## Target Details

Target:	HSPA6
Alternative Name:	HSPA6 ( <a href="#">HSPA6 Products</a> )

## Target Details

**Background:** In cooperation with other chaperones, Hsp70s stabilize preexistent proteins against aggregation and mediate the folding of newly translated polypeptides in the cytosol as well as within organelles. These chaperones participate in all these processes through their ability to recognize nonnative conformations of other proteins. They bind extended peptide segments with a net hydrophobic character exposed by polypeptides during translation and membrane translocation, or following stress-induced damage.

**Molecular Weight:** 71 kDa

**Gene ID:** 3310

## Application Details

**Application Notes:** Suggested dilution Reference ICC/IF 1:100-1:1000\* IHC (Formalin-fixed paraffin-embedded sections) 1:100-1:1000\* Western blot 1:500-1:3000\* Not tested in other applications. \*Optimal dilutions/concentrations should be determined by the researcher. Suggested dilution Reference ICC/IF 1:100-1:1000\* IHC (Formalin-fixed paraffin-embedded sections) 1:100-1:1000\* Western blot 1:500-1:3000\*

**Comment:** Positive Control: 293T , A431 , H1299 , HeLa , HepG2 , Molt-4 , Raji

**Restrictions:** For Research Use only

## Handling

**Format:** Liquid

**Concentration:** 1 mg/mL

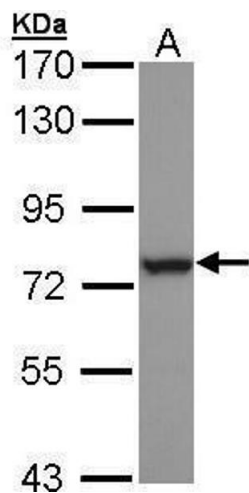
**Buffer:** 0.1M Tris, 0.1M Glycine, 10 % Glycerol ( pH 7). 0.01 % Thimerosal was added as a preservative.

**Preservative:** Thimerosal (Merthiolate)

**Precaution of Use:** This product contains Thimerosal (Merthiolate): a POISONOUS AND HAZARDOUS SUBSTANCE which should be handled by trained staff only.

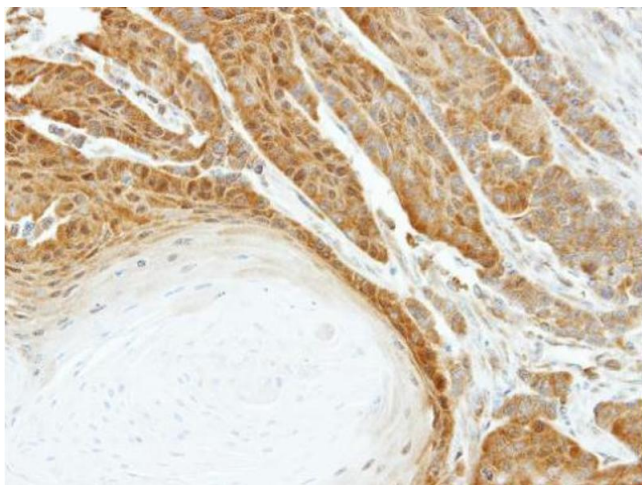
**Storage:** -20 °C

**Storage Comment:** Keep as concentrated solution. Aliquot and store at -20°C or below. Avoid multiple freeze-thaw cycles.



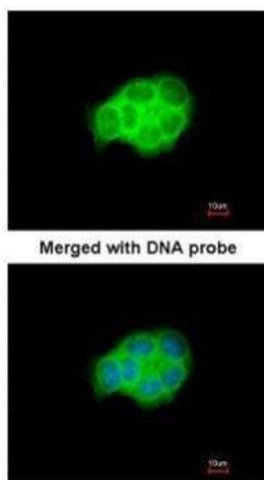
### Western Blotting

**Image 1.** WB Image Sample (30 ug of whole cell lysate) A:  
H1299 7.5% SDS PAGE antibody diluted at 1:1000



### Immunohistochemistry

**Image 2.** IHC-P Image Immunohistochemical analysis of paraffin-embedded SG xenograft, using HSPA6, antibody at 1:500 dilution.



### Immunofluorescence

**Image 3.** ICC/IF Image Immunofluorescence analysis of paraformaldehyde-fixed A431, using HSPA6, antibody at 1:200 dilution.