

Datasheet for ABIN2856280

anti-GAS2L1 antibody



[Go to Product page](#)

4 Images

Overview

Quantity:	100 µL
Target:	GAS2L1
Reactivity:	Human
Host:	Rabbit
Clonality:	Polyclonal
Conjugate:	This GAS2L1 antibody is un-conjugated
Application:	Western Blotting (WB), Immunocytochemistry (ICC), Immunohistochemistry (Paraffin-embedded Sections) (IHC (p)), Immunofluorescence (IF)

Product Details

Immunogen:	Recombinant protein encompassing a sequence within the center region of human GAS2L1. The exact sequence is proprietary.
Isotype:	IgG
Cross-Reactivity:	Human, Mouse
Characteristics:	Rabbit Polyclonal antibody to GAS2L1 (growth arrest-specific 2 like 1) GAS2L1 antibody
Purification:	Purified by antigen-affinity chromatography.

Target Details

Target:	GAS2L1
Alternative Name:	growth arrest specific 2 like 1 (GAS2L1 Products)

Target Details

Background:	<p>The protein encoded by this gene, a member of the GAS2 family, is similar in sequence to the mouse protein Gas2, an actin-associated protein expressed at high levels in growth-arrested cells. Expression of the mouse Gas2 gene is negatively regulated by serum and growth factors. Three transcript variants encoding two different isoforms have been found for this gene.</p> <p>Cellular Localization: Cytoplasm , cytoskeleton</p>
-------------	---

Molecular Weight:	73 kDa
-------------------	--------

Gene ID:	10634
----------	-------

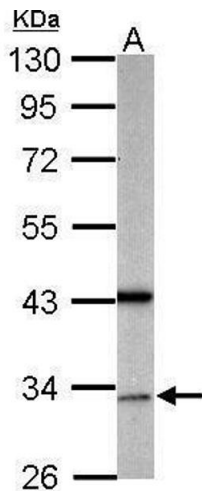
UniProt:	Q99501
----------	------------------------

Application Details

Application Notes:	WB: 1:500-1:3000. ICC/IF: 1:100-1:1000. IHC-P: 1:100-1:1000. Optimal dilutions/concentrations should be determined by the researcher. Not tested in other applications.
Comment:	Positive Control: Mouse brain , A431 , HeLa , A375
Restrictions:	For Research Use only

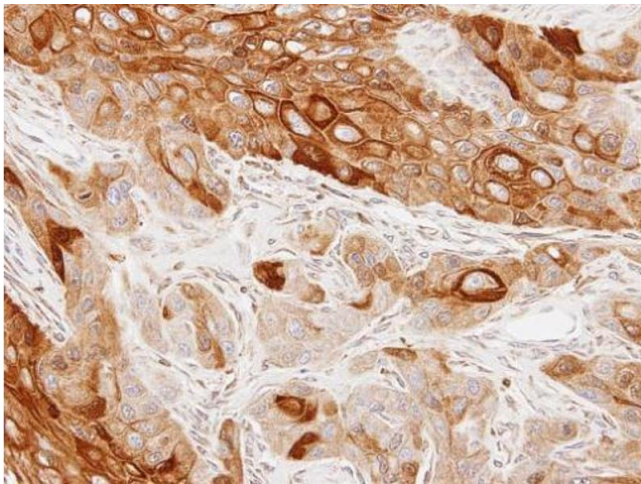
Handling

Format:	Liquid
Concentration:	0.8 mg/mL
Buffer:	0.1M Tris-Glycine (pH 7), 10 % Glycerol, 0.01 % Thimerosal
Preservative:	Thimerosal (Merthiolate)
Precaution of Use:	This product contains Thimerosal (Merthiolate): a POISONOUS AND HAZARDOUS SUBSTANCE which should be handled by trained staff only.
Storage:	4 °C,-20 °C
Storage Comment:	Store as concentrated solution. Centrifuge briefly prior to opening vial. For short-term storage (1-2 weeks), store at 4°C. For long-term storage, aliquot and store at -20°C or below. Avoid multiple freeze-thaw cycles.



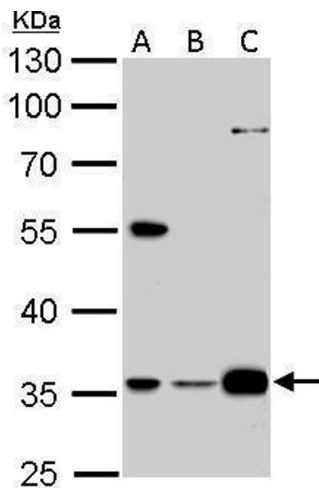
Western Blotting

Image 1. WB Image Sample (50 ug of whole cell lysate) A: mouse brain 10% SDS PAGE antibody diluted at 1:500



Immunohistochemistry

Image 2. IHC-P Image Immunohistochemical analysis of paraffin-embedded SCC4 xenograft, using GAS2L1, antibody at 1:100 dilution.



Western Blotting

Image 3. WB Image GAS2L1 antibody detects GAS2L1 protein by Western blot analysis. A. 30 µg A431 whole cell lysate/extract B. 30 µg HeLa whole cell lysate/extract C. 30 µg A375 whole cell lysate/extract 10 % SDS-PAGE GAS2L1 antibody , dilution: 1:1000

Please check the [product details page](#) for more images. Overall 4 images are available for ABIN2856280.