

Datasheet for ABIN2856283

anti-ESRRA antibody**3** Images[Go to Product page](#)

Overview

Quantity:	100 µL
Target:	ESRRA
Reactivity:	Human
Host:	Rabbit
Clonality:	Polyclonal
Conjugate:	This ESRRA antibody is un-conjugated
Application:	Western Blotting (WB), Immunohistochemistry (Paraffin-embedded Sections) (IHC (p)), Immunoprecipitation (IP), Chromatin Immunoprecipitation (ChIP)

Product Details

Immunogen:	Recombinant protein encompassing a sequence within the center region of human ERR alpha. The exact sequence is proprietary.
Isotype:	IgG
Cross-Reactivity:	Human
Characteristics:	Rabbit Polyclonal antibody to ERR alpha (estrogen-related receptor alpha) ERR alpha antibody [N1C3]
Purification:	Purified by antigen-affinity chromatography.

Target Details

Target:	ESRRA
Alternative Name:	estrogen related receptor alpha (ESRRA Products)

Target Details

Background: The protein encoded by this gene is a nuclear receptor that is closely related to the estrogen receptor. This protein acts as a site-specific transcription regulator and has been also shown to interact with estrogen and the transcription factor TFIIB by direct protein-protein contact. The binding and regulatory activities of this protein have been demonstrated in the regulation of a variety of genes including lactoferrin, osteopontin, medium-chain acyl coenzyme A dehydrogenase (MCAD) and thyroid hormone receptor genes. A processed pseudogene of ESRRA is located on chromosome 13q12.1.

Cellular Localization: Nucleus

Molecular Weight: 46 kDa

Gene ID: 2101

UniProt: [P11474](#)

Pathways: [Nuclear Receptor Transcription Pathway](#), [Steroid Hormone Mediated Signaling Pathway](#), [Regulation of Lipid Metabolism by PPARalpha](#)

Application Details

Application Notes: WB: 1:500-1:3000. IP: 1:100-1:500. Optimal dilutions/concentrations should be determined by the researcher. Not tested in other applications.

Comment: Positive Control: 293T

Restrictions: For Research Use only

Handling

Format: Liquid

Concentration: 0.93 mg/mL

Buffer: 0.1M Tris-Glycine (pH 7), 20 % Glycerol, 0.01 % Thimerosal

Preservative: Thimerosal (Merthiolate)

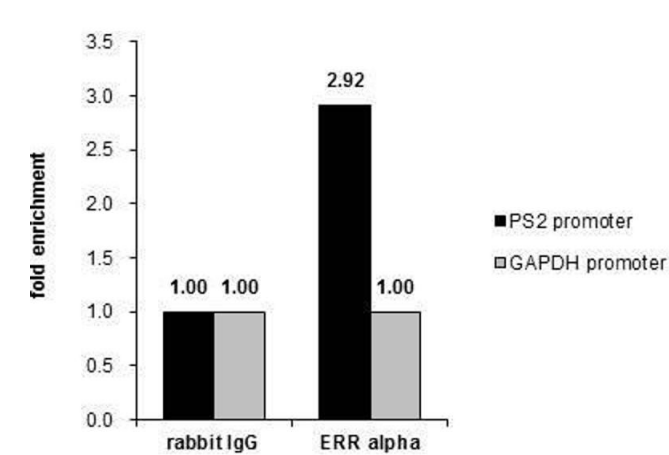
Precaution of Use: This product contains Thimerosal (Merthiolate): a POISONOUS AND HAZARDOUS SUBSTANCE which should be handled by trained staff only.

Storage: 4 °C,-20 °C

Storage Comment: Store as concentrated solution. Centrifuge briefly prior to opening vial. For short-term storage (1-2 weeks), store at 4°C. For long-term storage, aliquot and store at -20°C or below. Avoid

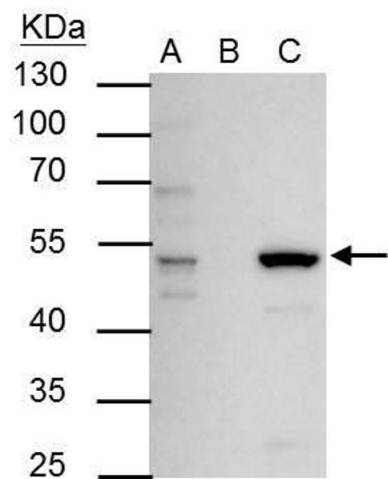
multiple freeze-thaw cycles.

Images



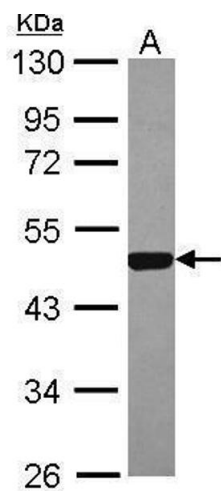
Chromatin Immunoprecipitation

Image 1. ChIP Image Cross-linked ChIP was performed with MCF-7 chromatin extract and 5 µg of either control rabbit IgG or anti-ERR alpha antibody. The precipitated DNA was detected by PCR with primer set targeting to PS2 promoter or GAPDH promoter.



Immunoprecipitation

Image 2. IP Image ERR alpha antibody immunoprecipitates ERR alpha protein in IP experiments. IP Sample: 293T whole cell lysate/extract A : 30 µg whole cell lysate/extract of ERR alpha protein expressing 293T cells B : Control with 2.5 µg of pre-immune rabbit IgG C : Immunoprecipitation of ERR alpha by 2.5 µg of ERR alpha antibody , 10% SDS-PAGE The immunoprecipitated ERR alpha protein was detected by ERR alpha antibody , diluted at 1 : 1000. EasyBlot anti-rabbit IgG (HRP) was used as a secondary reagent.



Western Blotting

Image 3. WB Image Sample (30 ug of whole cell lysate) A: 293T 10% SDS PAGE antibody diluted at 1:2000