



[Go to Product page](#)

Datasheet for ABIN2856288

anti-SHKBP1 antibody

2 Images

Overview

| | |
|--------------|--|
| Quantity: | 100 µL |
| Target: | SHKBP1 |
| Reactivity: | Human |
| Host: | Rabbit |
| Clonality: | Polyclonal |
| Conjugate: | This SHKBP1 antibody is un-conjugated |
| Application: | Western Blotting (WB), Immunohistochemistry (Paraffin-embedded Sections) (IHC (p)) |

Product Details

| | |
|-------------------|---|
| Immunogen: | Recombinant protein encompassing a sequence within the center region of human SHKBP1. The exact sequence is proprietary. |
| Isotype: | IgG |
| Cross-Reactivity: | Human |
| Characteristics: | Rabbit polyclonal antibody to SHKBP1 (SH3KBP1 binding protein 1) SHKBP1 antibody [N2C2], Internal |
| Purification: | Purified by antigen-affinity chromatography. |

Target Details

| | |
|-------------------|---|
| Target: | SHKBP1 |
| Alternative Name: | SH3KBP1 binding protein 1 (SHKBP1 Products) |

Target Details

Molecular Weight: 76 kDa

Gene ID: 92799

UniProt: [Q8TBC3](#)

Application Details

Application Notes: WB: 1:500-1:3000. IHC-P: 1:100-1:1000. Optimal dilutions/concentrations should be determined by the researcher. Not tested in other applications.

Comment: Positive Control: A431 , H1299

Restrictions: For Research Use only

Handling

Format: Liquid

Concentration: 1 mg/mL

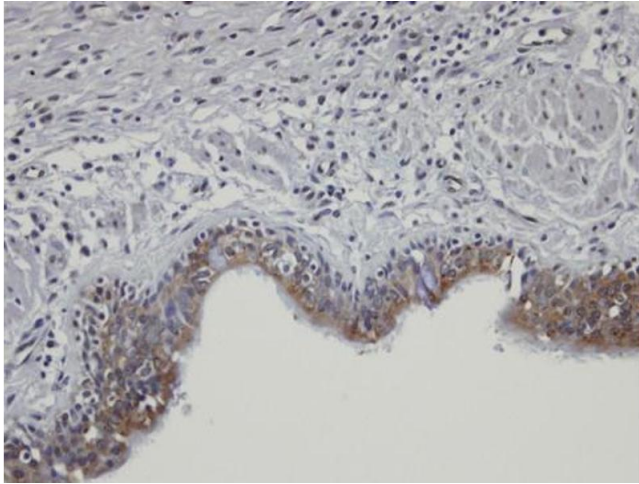
Buffer: 0.1M Tris-Glycine (pH 7), 10 % Glycerol, 0.01 % Thimerosal

Preservative: Thimerosal (Merthiolate)

Precaution of Use: This product contains Thimerosal (Merthiolate): a POISONOUS AND HAZARDOUS SUBSTANCE which should be handled by trained staff only.

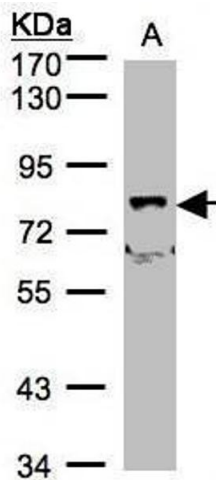
Storage: 4 °C,-20 °C

Storage Comment: Store as concentrated solution. Centrifuge briefly prior to opening vial. For short-term storage (1-2 weeks), store at 4°C. For long-term storage, aliquot and store at -20°C or below. Avoid multiple freeze-thaw cycles.



Immunohistochemistry

Image 1. IHC-P Image Immunohistochemical analysis of paraffin-embedded PC13 xenograft, using SHKBP1, antibody at 1:100 dilution.



Western Blotting

Image 2. WB Image Sample(30 µg of whole cell lysate) A:A431, B:H1299 7.5% SDS PAGE antibody diluted at 1:500