

Datasheet for ABIN2856302
anti-RAE1 antibody (C-Term)[Go to Product page](#)

2 Images

Overview

Quantity:	100 µL
Target:	RAE1
Binding Specificity:	C-Term
Reactivity:	Human
Host:	Rabbit
Clonality:	Polyclonal
Conjugate:	This RAE1 antibody is un-conjugated
Application:	Western Blotting (WB), Immunofluorescence (IF), Immunocytochemistry (ICC)

Product Details

Immunogen:	Carrier-protein conjugated synthetic peptide encompassing a sequence within the C-terminus region of human RAE1. The exact sequence is proprietary.
Isotype:	IgG
Cross-Reactivity:	Mouse (Murine), Rat (Rattus), Zebrafish (Danio rerio), Xenopus laevis, Xenopus tropicalis, Pig (Porcine), Cow (Bovine)
Cross-Reactivity (Details):	Mouse (100 %), Rat (100 %), Zebrafish (100 %), Xenopus laevis (100 %), Xenopus Tropicalis (100 %), Pig (100 %), Bovine (100 %)
Characteristics:	Rabbit polyclonal antibody to RAE1 (RAE1 RNA export 1 homolog (S. pombe)) RAE1 antibody [C3], C-term
Purification:	Purified by antigen-affinity chromatography.

Target Details

Target:	RAE1
Alternative Name:	RAE1 (RAE1 Products)
Background:	<p>Mutations in the Schizosaccharomyces pombe Rae1 and Saccharomyces cerevisiae Gle2 genes have been shown to result in accumulation of poly(A)-containing mRNA in the nucleus, suggesting that the encoded proteins are involved in RNA export. The protein encoded by this gene is a homolog of yeast Rae1. It contains four WD40 motifs, and has been shown to localize to distinct foci in the nucleoplasm, to the nuclear rim, and to meshwork-like structures throughout the cytoplasm. This gene is thought to be involved in nucleocytoplasmic transport, and in directly or indirectly attaching cytoplasmic mRNPs to the cytoskeleton. Alternatively spliced transcript variants encoding the same protein have been found for this gene.</p> <p>Cellular Localization: Cytoplasm , Nucleus</p>
Molecular Weight:	41 kDa
Gene ID:	8480
Pathways:	SARS-CoV-2 Protein Interactome

Application Details

Application Notes:	Suggested dilution Reference ICC/IF 1:100-1:1000* Western blot 1:500-1:3000* Not tested in other applications. *Optimal dilutions/concentrations should be determined by the researcher.Suggested dilutionReferenceICC/IF1:100-1:1000* Western blot1:500-1:3000*
Comment:	Positive Control: HeLaS3 , Molt-4 , Raji
Restrictions:	For Research Use only

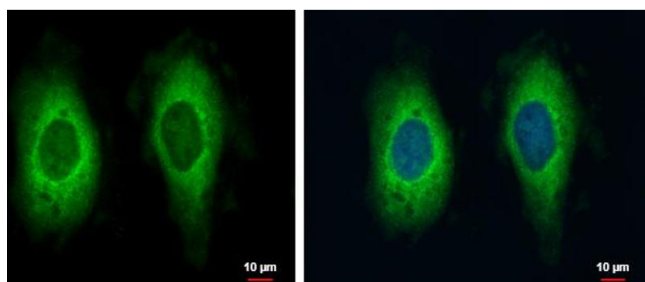
Handling

Format:	Liquid
Concentration:	1 mg/mL
Buffer:	1XPBS, 10 % Glycerol (pH 7). 0.01 % Thimerosal was added as a preservative.
Preservative:	Thimerosal (Merthiolate)
Precaution of Use:	This product contains Thimerosal (Merthiolate): a POISONOUS AND HAZARDOUS SUBSTANCE which should be handled by trained staff only.
Storage:	-20 °C

Handling

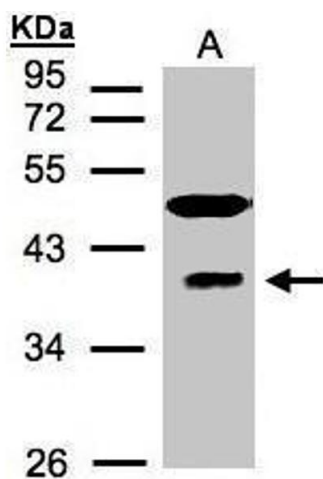
Storage Comment: Keep as concentrated solution. Aliquot and store at -20°C or below. Avoid multiple freeze-thaw cycles.

Images



Immunofluorescence

Image 1. ICC/IF Image RAE1 antibody [C3], C-term detects RAE1 protein at cytoplasm by immunofluorescent analysis. Sample: HeLa cells were fixed in 4% paraformaldehyde at RT for 15 min. Green: RAE1 protein stained by RAE1 antibody [C3], C-term, diluted at 1:500. Blue: Hoechst 33342 staining.



Western Blotting

Image 2. WB Image Sample(30 µg of whole cell lysate) A:HeLa S3, 12% SDS PAGE antibody diluted at 1:1500