

Datasheet for ABIN2856304
anti-GOPC antibody (C-Term)[Go to Product page](#)

1 Image

Overview

Quantity:	100 µL
Target:	GOPC
Binding Specificity:	C-Term
Reactivity:	Human
Host:	Rabbit
Clonality:	Polyclonal
Conjugate:	This GOPC antibody is un-conjugated
Application:	Western Blotting (WB)

Product Details

Immunogen:	Carrier-protein conjugated synthetic peptide encompassing a sequence within the C-terminus region of human PIST. The exact sequence is proprietary.
Isotype:	IgG
Cross-Reactivity:	Human
Characteristics:	Rabbit polyclonal antibody to PIST (golgi associated PDZ and coiled-coil motif containing) PIST antibody [C3], C-term
Purification:	Purified by antigen-affinity chromatography.

Target Details

Target:	GOPC
---------	------

Target Details

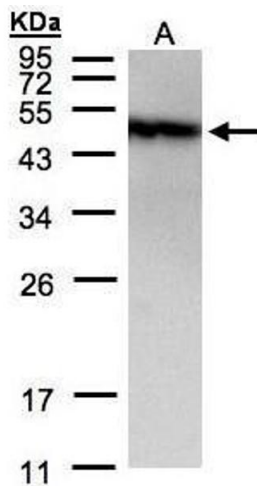
Alternative Name:	golgi associated PDZ and coiled-coil motif containing (GOPC Products)
Background:	<p>PIST is a PDZ domain-containing Golgi protein. PDZ domains contain approximately 90 amino acids and bind the extreme C terminus of proteins in a sequence-specific manner.[supplied by OMIM]</p> <p>Cellular Localization: Cytoplasm , Golgi apparatus membrane, Peripheral membrane protein , Golgi apparatus , trans-Golgi network membrane, Peripheral membrane protein , Cell junction , synapse (By similarity) , synapse , postsynaptic cell membrane , postsynaptic density (By sim</p>
Molecular Weight:	51 kDa
Gene ID:	57120
UniProt:	Q9HD26
Pathways:	Maintenance of Protein Location , Asymmetric Protein Localization

Application Details

Application Notes:	WB: 1:500-1:3000. Optimal dilutions/concentrations should be determined by the researcher. Not tested in other applications.
Comment:	Positive Control: A431
Restrictions:	For Research Use only

Handling

Format:	Liquid
Concentration:	1 mg/mL
Buffer:	1XPBS (pH 7), 10 % Glycerol, 0.01 % Thimerosal
Preservative:	Thimerosal (Merthiolate)
Precaution of Use:	This product contains Thimerosal (Merthiolate): a POISONOUS AND HAZARDOUS SUBSTANCE which should be handled by trained staff only.
Storage:	4 °C, -20 °C
Storage Comment:	Store as concentrated solution. Centrifuge briefly prior to opening vial. For short-term storage (1-2 weeks), store at 4°C. For long-term storage, aliquot and store at -20°C or below. Avoid multiple freeze-thaw cycles.



Western Blotting

Image 1. WB Image Sample(30 µg of whole cell lysate)
A:A431, 12% SDS PAGE antibody diluted at 1:1500