

Datasheet for ABIN2856306
anti-TOM1L2 antibody (C-Term)[Go to Product page](#)

1 Image

Overview

Quantity:	100 µL
Target:	TOM1L2
Binding Specificity:	C-Term
Reactivity:	Human
Host:	Rabbit
Clonality:	Polyclonal
Conjugate:	This TOM1L2 antibody is un-conjugated
Application:	Western Blotting (WB)

Product Details

Immunogen:	Carrier-protein conjugated synthetic peptide encompassing a sequence within the C-terminus region of human TOM1-like protein 2. The exact sequence is proprietary.
Isotype:	IgG
Cross-Reactivity:	Mouse (Murine), Chicken, Rhesus Monkey
Cross-Reactivity (Details):	Mouse (93 %), Chicken (93 %), Rhesus Monkey (100 %)
Characteristics:	Rabbit polyclonal antibody to TOM1-like protein 2 (target of myb1-like 2 (chicken)) TOM1-like protein 2 antibody [C3], C-term
Purification:	Purified by antigen-affinity chromatography.

Target Details

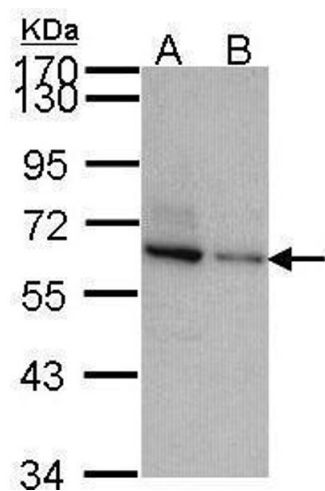
Target:	TOM1L2
Alternative Name:	TOM1-Like Protein 2 (TOM1L2 Products)
Background:	Probable role in protein transport. May regulate growth factor-induced mitogenic signaling.
Molecular Weight:	56 kDa
Gene ID:	146691

Application Details

Application Notes:	Suggested dilution Reference Western blot 1:500-1:3000* Not tested in other applications. *Optimal dilutions/concentrations should be determined by the researcher.Suggested dilutionReferenceWestern blot1:500-1:3000*
Comment:	Positive Control: A549 , HeLa , Jurkat , NT2D1
Restrictions:	For Research Use only

Handling

Format:	Liquid
Concentration:	1 mg/mL
Buffer:	0.1M Tris, 0.1M Glycine, 10 % Glycerol (pH 7). 0.01 % Thimerosal was added as a preservative.
Preservative:	Thimerosal (Merthiolate)
Precaution of Use:	This product contains Thimerosal (Merthiolate): a POISONOUS AND HAZARDOUS SUBSTANCE which should be handled by trained staff only.
Storage:	-20 °C
Storage Comment:	Keep as concentrated solution. Aliquot and store at -20°C or below. Avoid multiple freeze-thaw cycles.



Western Blotting

Image 1. WB Image Sample (30 ug of whole cell lysate) A: JurKat B: NT2D1 7.5% SDS PAGE antibody diluted at 1:1000