

Datasheet for ABIN2856317  
**anti-NET1 antibody (C-Term)**[Go to Product page](#)

## 1 Image

## Overview

Quantity:	100 µL
Target:	NET1
Binding Specificity:	C-Term
Reactivity:	Human
Host:	Rabbit
Clonality:	Polyclonal
Conjugate:	This NET1 antibody is un-conjugated
Application:	Western Blotting (WB)

## Product Details

Immunogen:	Carrier-protein conjugated synthetic peptide encompassing a sequence within the C-terminus region of human NET1. The exact sequence is proprietary.
Isotype:	IgG
Cross-Reactivity:	Human
Characteristics:	Rabbit polyclonal antibody to NET1 (neuroepithelial cell transforming gene 1) NET1 antibody [C3], C-term
Purification:	Purified by antigen-affinity chromatography.

## Target Details

Target:	NET1
---------	------

## Target Details

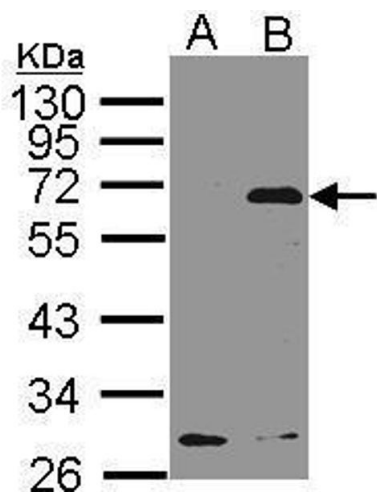
Alternative Name:	neuroepithelial cell transforming 1 ( <a href="#">NET1 Products</a> )
Background:	Acts as guanine nucleotide exchange factor (GEF) for RhoA GTPase. May be involved in activation of the SAPK/JNK pathway.  Cellular Localization: Cytoplasm , Nucleus
Molecular Weight:	68 kDa
Gene ID:	10276
UniProt:	<a href="#">Q7Z628</a>
Pathways:	<a href="#">Neurotrophin Signaling Pathway</a>

## Application Details

Application Notes:	WB: 1:500-1:3000. Optimal dilutions/concentrations should be determined by the researcher. Not tested in other applications.
Comment:	Positive Control: NET1 transfected 293T
Restrictions:	For Research Use only

## Handling

Format:	Liquid
Concentration:	0.75 mg/mL
Buffer:	1XPBS ( pH 7), 10 % Glycerol, 0.01 % Thimerosal
Preservative:	Thimerosal (Merthiolate)
Precaution of Use:	This product contains Thimerosal (Merthiolate): a POISONOUS AND HAZARDOUS SUBSTANCE which should be handled by trained staff only.
Storage:	4 °C,-20 °C
Storage Comment:	Store as concentrated solution. Centrifuge briefly prior to opening vial. For short-term storage (1-2 weeks), store at 4°C. For long-term storage, aliquot and store at -20°C or below. Avoid multiple freeze-thaw cycles.



Western Blotting

**Image 1.** WB Image Western Blot analysis of NET1 expression in transfected 293T cell line by NET1 polyclonal antibody. A: Non-transfected lysate. B: NET1 transfected lysate. 12% SDS PAGE antibody diluted at 1:500