



[Go to Product page](#)

Datasheet for ABIN2856320  
**anti-IFT74 antibody (C-Term)**

2 Images

Overview

Quantity:	100 µL
Target:	IFT74
Binding Specificity:	C-Term
Reactivity:	Human
Host:	Rabbit
Clonality:	Polyclonal
Conjugate:	This IFT74 antibody is un-conjugated
Application:	Western Blotting (WB), Immunofluorescence (IF), Immunocytochemistry (ICC)

Product Details

Immunogen:	Carrier-protein conjugated synthetic peptide encompassing a sequence within the C-terminus region of human CMG1. The exact sequence is proprietary.
Isotype:	IgG
Cross-Reactivity:	Human
Characteristics:	Rabbit Polyclonal antibody to CMG1 (intraflagellar transport protein 74 homolog) CMG1 antibody [C3], C-term
Purification:	Purified by antigen-affinity chromatography.

Target Details

Target:	IFT74
---------	-------

## Target Details

---

Alternative Name: [intraflagellar transport 74 \(IFT74 Products\)](#)

Background: Cellular Localization: Cytoplasmic vesicle

Molecular Weight: 69 kDa

Gene ID: 80173

UniProt: [Q96LB3](#)

Pathways: [Hedgehog Signaling, Chromatin Binding](#)

## Application Details

---

Application Notes: WB: 1:500-1:3000. ICC/IF: 1:100-1:1000. Optimal dilutions/concentrations should be determined by the researcher. Not tested in other applications.

Comment: Positive Control: Raji

Restrictions: For Research Use only

## Handling

---

Format: Liquid

Concentration: 0.4 mg/mL

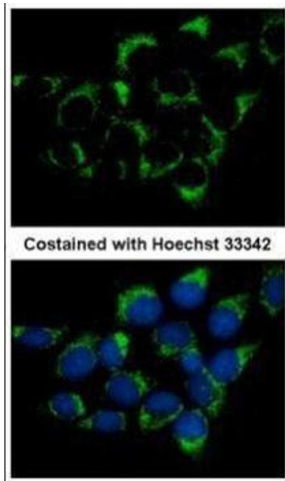
Buffer: 0.1M Tris-Glycine ( pH 7), 10 % Glycerol, 0.01 % Thimerosal

Preservative: Thimerosal (Merthiolate)

Precaution of Use: This product contains Thimerosal (Merthiolate): a POISONOUS AND HAZARDOUS SUBSTANCE which should be handled by trained staff only.

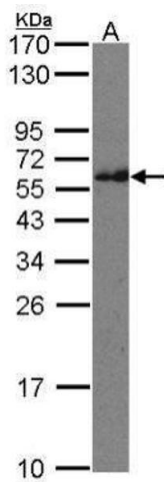
Storage: 4 °C, -20 °C

Storage Comment: Store as concentrated solution. Centrifuge briefly prior to opening vial. For short-term storage (1-2 weeks), store at 4°C. For long-term storage, aliquot and store at -20°C or below. Avoid multiple freeze-thaw cycles.



### Immunofluorescence

**Image 1.** ICC/IF Image Immunofluorescence analysis of methanol-fixed A431, using CMG1, antibody at 1:500 dilution.



### Western Blotting

**Image 2.** WB Image Sample(30 µg of whole cell lysate) A: Raji 12% SDS PAGE antibody diluted at 1:500