

Datasheet for ABIN2856328  
**anti-OMG antibody (C-Term)**[Go to Product page](#)

## 2 Images

## Overview

Quantity:	100 µL
Target:	OMG
Binding Specificity:	C-Term
Reactivity:	Human
Host:	Rabbit
Clonality:	Polyclonal
Conjugate:	This OMG antibody is un-conjugated
Application:	Western Blotting (WB), Immunohistochemistry (Frozen Sections) (IHC (fro))

## Product Details

Immunogen:	Carrier-protein conjugated synthetic peptide encompassing a sequence within the C-terminus region of human OMG. The exact sequence is proprietary.
Isotype:	IgG
Cross-Reactivity:	Human, Mouse
Characteristics:	Rabbit polyclonal antibody to OMG (oligodendrocyte myelin glycoprotein) OMG antibody [C1C2], Internal
Purification:	Purified by antigen-affinity chromatography.

## Target Details

Target:	OMG
---------	-----

## Target Details

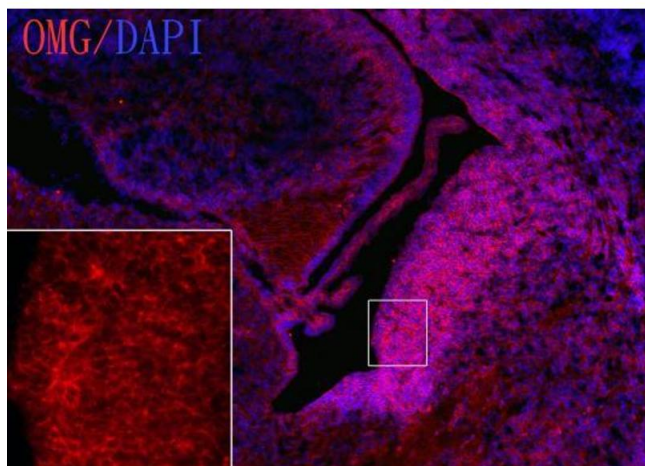
Alternative Name:	oligodendrocyte myelin glycoprotein ( <a href="#">OMG Products</a> )
Background:	Cell adhesion molecule contributing to the interactive process required for myelination in the central nervous system.  Cellular Localization: Cell membrane, Lipid-anchor , GPI-anchor
Molecular Weight:	50 kDa
Gene ID:	4974
UniProt:	<a href="#">P23515</a>
Pathways:	<a href="#">Neurotrophin Signaling Pathway</a> , <a href="#">Regulation of Cell Size</a>

## Application Details

Application Notes:	WB: 1:500-1:3000. IHC-Fr: 1:100-1:1000. Optimal dilutions/concentrations should be determined by the researcher. Not tested in other applications.
Comment:	Positive Control: IMR32
Restrictions:	For Research Use only

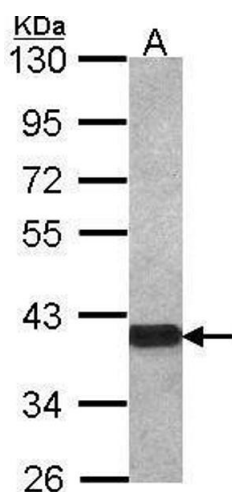
## Handling

Format:	Liquid
Concentration:	1 mg/mL
Buffer:	1XPBS ( pH 7), 10 % Glycerol, 0.01 % Thimerosal
Preservative:	Thimerosal (Merthiolate)
Precaution of Use:	This product contains Thimerosal (Merthiolate): a POISONOUS AND HAZARDOUS SUBSTANCE which should be handled by trained staff only.
Storage:	4 °C, -20 °C
Storage Comment:	Store as concentrated solution. Centrifuge briefly prior to opening vial. For short-term storage (1-2 weeks), store at 4°C. For long-term storage, aliquot and store at -20°C or below. Avoid multiple freeze-thaw cycles.



#### Immunohistochemistry

**Image 1.** IHC-Fr Image OMG antibody [C1C2] detects OMG protein on embryonic mouse brain by immunohistochemical analysis. Sample: Frozen section of embryonic mouse brain (mE18.5). Red: OMG antibody [C1C2] , diluted at 1:1250. Blue: DAPI



#### Western Blotting

**Image 2.** WB Image Sample (30 ug of whole cell lysate) A: IMR32 10% SDS PAGE antibody diluted at 1:1000