

Datasheet for ABIN2856331  
**anti-Pleckstrin antibody (C-Term)**[Go to Product page](#)

## 2 Images

## Overview

Quantity:	100 µL
Target:	Pleckstrin (PLEK)
Binding Specificity:	C-Term
Reactivity:	Human
Host:	Rabbit
Clonality:	Polyclonal
Conjugate:	This Pleckstrin antibody is un-conjugated
Application:	Western Blotting (WB), Immunofluorescence (IF), Immunocytochemistry (ICC)

## Product Details

Immunogen:	Carrier-protein conjugated synthetic peptide encompassing a sequence within the C-terminus region of human Pleckstrin. The exact sequence is proprietary.
Isotype:	IgG
Cross-Reactivity:	Human
Characteristics:	Rabbit Polyclonal antibody to Pleckstrin (pleckstrin) Pleckstrin antibody [C2C3], C-term
Purification:	Purified by antigen-affinity chromatography.

## Target Details

Target:	Pleckstrin (PLEK)
---------	-------------------

## Target Details

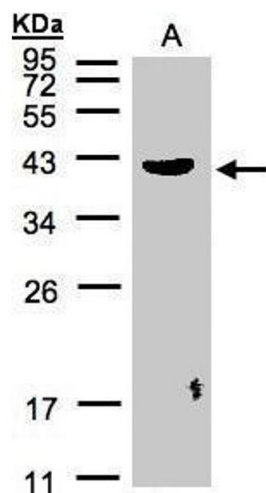
Alternative Name:	pleckstrin ( <a href="#">PLEK Products</a> )
Background:	Major protein kinase C substrate of platelets, its exact function is not known.
Molecular Weight:	40 kDa
Gene ID:	5341
UniProt:	<a href="#">P08567</a>
Pathways:	<a href="#">Inositol Metabolic Process</a> , <a href="#">Regulation of G-Protein Coupled Receptor Protein Signaling</a> , <a href="#">Regulation of Cell Size</a> , <a href="#">Regulation of Carbohydrate Metabolic Process</a>

## Application Details

Application Notes:	WB: 1:500-1:3000. ICC/IF: 1:100-1:1000. Optimal dilutions/concentrations should be determined by the researcher. Not tested in other applications.
Restrictions:	For Research Use only

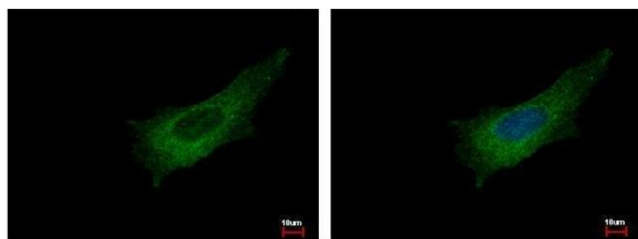
## Handling

Format:	Liquid
Concentration:	0.61 mg/mL
Buffer:	0.1M Tris-Glycine ( pH 7), 10 % Glycerol, 0.01 % Thimerosal
Preservative:	Thimerosal (Merthiolate)
Precaution of Use:	This product contains Thimerosal (Merthiolate): a POISONOUS AND HAZARDOUS SUBSTANCE which should be handled by trained staff only.
Storage:	4 °C,-20 °C
Storage Comment:	Store as concentrated solution. Centrifuge briefly prior to opening vial. For short-term storage (1-2 weeks), store at 4°C. For long-term storage, aliquot and store at -20°C or below. Avoid multiple freeze-thaw cycles.



### Western Blotting

**Image 1.** WB Image Sample(30 µg of whole cell lysate)  
A:Raji, 12% SDS PAGE antibody diluted at 1:500



### Immunofluorescence

**Image 2.** ICC/IF Image Pleckstrin antibody [C2C3], C-term detects PLEK protein at cytoplasm by immunofluorescent analysis. Sample: HeLa cells were fixed in  $-20^{\circ}\text{C}$  100% MeOH for 5 min. Green: PLEK protein stained by Pleckstrin antibody [C2C3], C-term, diluted at 1:500. Blue: Hoechst 33343 staining.