



Datasheet for ABIN2856332
anti-PLRG1 antibody (C-Term)



[Go to Product page](#)

3 Images

Overview

Quantity:	100 µL
Target:	PLRG1
Binding Specificity:	C-Term
Reactivity:	Human
Host:	Rabbit
Clonality:	Polyclonal
Conjugate:	This PLRG1 antibody is un-conjugated
Application:	Western Blotting (WB), Immunofluorescence (IF), Immunohistochemistry (Paraffin-embedded Sections) (IHC (p)), Immunocytochemistry (ICC)

Product Details

Immunogen:	Carrier-protein conjugated synthetic peptide encompassing a sequence within the C-terminus region of human PLRG1. The exact sequence is proprietary.
Isotype:	IgG
Cross-Reactivity:	Human, Mouse
Characteristics:	Rabbit polyclonal antibody to PLRG1 (pleiotropic regulator 1 (PRL1 homolog, Arabidopsis)) PLRG1 antibody [C3], C-term
Purification:	Purified by antigen-affinity chromatography.

Target Details

Target:	PLRG1
---------	-------

Target Details

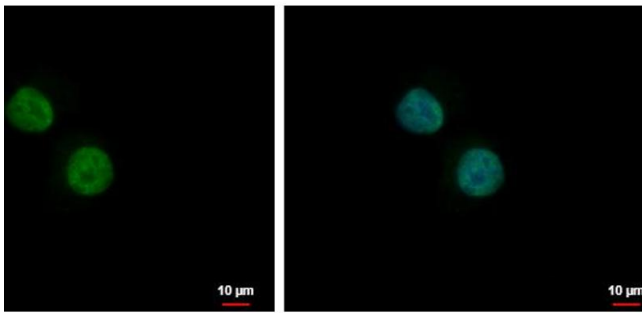
Alternative Name:	pleiotropic regulator 1 (PLRG1 Products)
Background:	Necessary for spliceosome assembly and for pre-mRNA splicing. Cellular Localization: Nucleus speckle
Molecular Weight:	57 kDa
Gene ID:	5356
UniProt:	O43660

Application Details

Application Notes:	WB: 1:500-1:3000. ICC/IF: 1:100-1:1000. IHC-P: 1:100-1:1000. Optimal dilutions/concentrations should be determined by the researcher. Not tested in other applications.
Comment:	Positive Control: HepG2
Restrictions:	For Research Use only

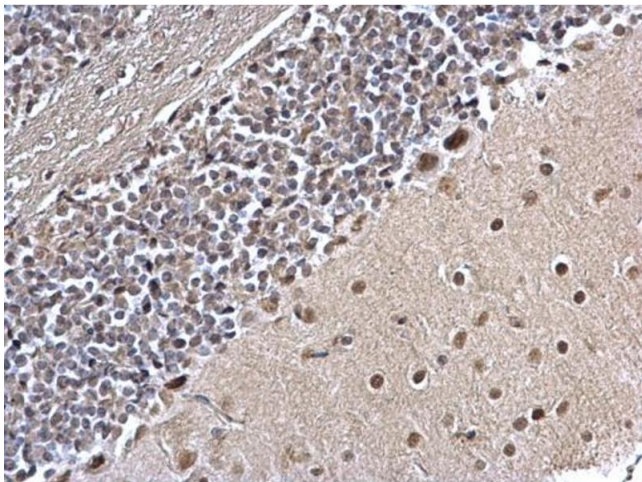
Handling

Format:	Liquid
Concentration:	1 mg/mL
Buffer:	1XPBS (pH 7), 10 % Glycerol, 0.01 % Thimerosal
Preservative:	Thimerosal (Merthiolate)
Precaution of Use:	This product contains Thimerosal (Merthiolate): a POISONOUS AND HAZARDOUS SUBSTANCE which should be handled by trained staff only.
Storage:	4 °C, -20 °C
Storage Comment:	Store as concentrated solution. Centrifuge briefly prior to opening vial. For short-term storage (1-2 weeks), store at 4°C. For long-term storage, aliquot and store at -20°C or below. Avoid multiple freeze-thaw cycles.



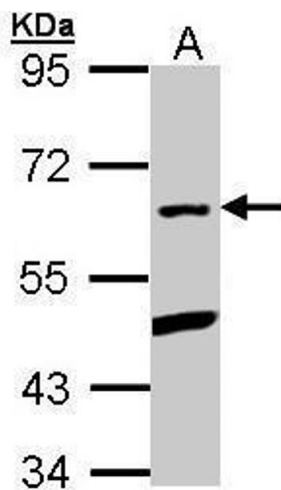
Immunofluorescence

Image 1. ICC/IF Image PLRG1 antibody [C3], C-term detects PLRG1 protein at nucleus by immunofluorescent analysis. Sample: H1299 cells were fixed in 4% paraformaldehyde at RT for 15 min. Green: PLRG1 protein stained by PLRG1 antibody [C3], C-term , diluted at 1:500. Blue: Hoechst 33342 staining.



Immunohistochemistry

Image 2. IHC-P Image PLRG1 antibody [C3], C-term detects PLRG1 protein at nucleus on mouse hind brain by immunohistochemical analysis. Sample: Paraffin-embedded mouse hind brain. PLRG1 antibody [C3], C-term , dilution: 1:500.



Western Blotting

Image 3. WB Image Sample (30 ug of whole cell lysate) A: Hep G2 , 7.5% SDS PAGE antibody diluted at 1:1000