

Datasheet for ABIN2856333
anti-PPP2CA antibody (C-Term)

8 Images

[Go to Product page](#)

Overview

Quantity:	100 µL
Target:	PPP2CA
Binding Specificity:	C-Term
Reactivity:	Human, Mouse, Rat
Host:	Rabbit
Clonality:	Polyclonal
Conjugate:	This PPP2CA antibody is un-conjugated
Application:	Western Blotting (WB), Immunofluorescence (IF), Immunohistochemistry (Paraffin-embedded Sections) (IHC (p)), Immunoprecipitation (IP), Immunocytochemistry (ICC)

Product Details

Immunogen:	Carrier-protein conjugated synthetic peptide encompassing a sequence within the C-terminus region of human PP2A alpha. The exact sequence is proprietary.
Isotype:	IgG
Cross-Reactivity:	Rat (Rattus), Zebrafish (Danio rerio), Xenopus laevis, Xenopus tropicalis, Dog (Canine), Pig (Porcine), Rabbit, Chicken, Cow (Bovine)
Cross-Reactivity (Details):	Rat (100 %), Zebrafish (100 %), Xenopus laevis (100 %), Xenopus Tropicalis (100 %), Dog (100 %), Pig (100 %), Rabbit (100 %), Chicken (100 %), Bovine (100 %)
Characteristics:	Rabbit Polyclonal antibody to PP2A alpha (protein phosphatase 2, catalytic subunit, alpha isozyme) PP2A alpha antibody

Product Details

Purification: Purified by antigen-affinity chromatography.

Target Details

Target: PPP2CA

Alternative Name: PP2A alpha ([PPP2CA Products](#))

Background: This gene encodes the phosphatase 2A catalytic subunit. Protein phosphatase 2A is one of the four major Ser/Thr phosphatases, and it is implicated in the negative control of cell growth and division. It consists of a common heteromeric core enzyme, which is composed of a catalytic subunit and a constant regulatory subunit, that associates with a variety of regulatory subunits. This gene encodes an alpha isoform of the catalytic subunit.

Cellular Localization: Cytoplasm , Nucleus , Centromere , Spindle

Molecular Weight: 36 kDa

Gene ID: 5515

Pathways: [PI3K-Akt Signaling](#), [Mitotic G1-G1/S Phases](#), [Hepatitis C](#), [Toll-Like Receptors Cascades](#)

Application Details

Application Notes: Suggested dilution Reference ICC/IF 1:100-1:1000* IHC (Formalin-fixed paraffin-embedded sections) 1:100-1:1000* Immunoprecipitation 1:100-1:500* Western blot 1:1000-1:10000* Not tested in other applications. *Optimal dilutions/concentrations should be determined by the researcher. Suggested dilution Reference ICC/IF 1:100-1:1000* IHC (Formalin-fixed paraffin-embedded sections) 1:100-1:1000* Immunoprecipitation 1:100-1:500* Western blot 1:1000-1:10000*

Comment: Positive Control: 293T , A431 , H1299 , HeLaS3 , Molt-4 , Raji , mouse brain

Restrictions: For Research Use only

Handling

Format: Liquid

Concentration: 0.479 mg/mL

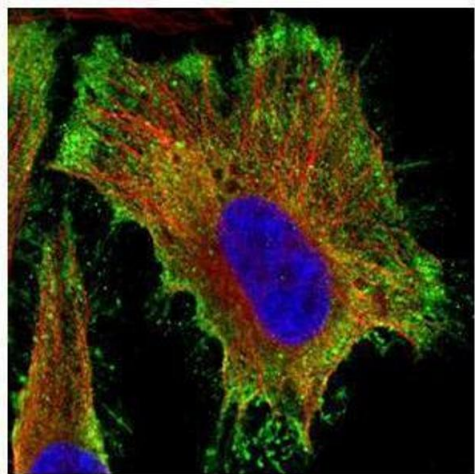
Buffer: 1XPBS, 10 % Glycerol (pH 7). 0.01 % Thimerosal was added as a preservative.

Preservative: Thimerosal (Merthiolate)

Handling

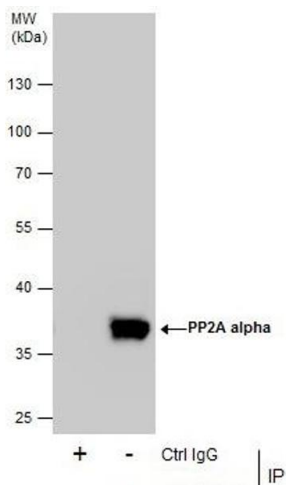
Precaution of Use:	This product contains Thimerosal (Merthiolate): a POISONOUS AND HAZARDOUS SUBSTANCE which should be handled by trained staff only.
Storage:	-20 °C
Storage Comment:	Keep as concentrated solution. Aliquot and store at -20°C or below. Avoid multiple freeze-thaw cycles.

Images



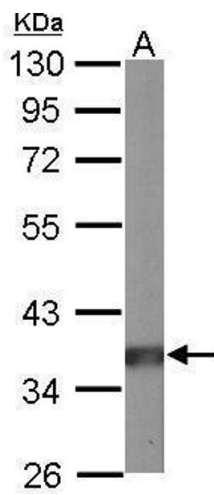
Immunofluorescence

Image 1. ICC/IF Image Confocal immunofluorescence analysis (Olympus FV10i) of paraformaldehyde-fixed HeLa, using PP2A alpha, antibody (Green) at 1:500 dilution. Alpha-tubulin filaments were labeled with (Red) at 1:2000.



Immunoprecipitation

Image 2. IP Image Immunoprecipitation of PP2A alpha protein from 293T whole cell extracts using 5 µg of PP2A alpha antibody, Western blot analysis was performed using PP2A alpha antibody, EasyBlot anti-Rabbit IgG was used as a secondary reagent.



Western Blotting

Image 3. WB Image Sample (50 ug of whole cell lysate) A: mouse brain 10% SDS PAGE antibody diluted at 1:10000

Please check the [product details page](#) for more images. Overall 8 images are available for ABIN2856333.