



Datasheet for ABIN2856334
anti-RAB2A antibody (C-Term)



[Go to Product page](#)

3 Images

Overview

Quantity:	100 µL
Target:	RAB2A
Binding Specificity:	C-Term
Reactivity:	Human
Host:	Rabbit
Clonality:	Polyclonal
Conjugate:	This RAB2A antibody is un-conjugated
Application:	Western Blotting (WB), Immunohistochemistry (Paraffin-embedded Sections) (IHC (p))

Product Details

Immunogen:	Carrier-protein conjugated synthetic peptide encompassing a sequence within the C-terminus region of human RAB2A. The exact sequence is proprietary.
Isotype:	IgG
Cross-Reactivity:	Human
Characteristics:	Rabbit polyclonal antibody to RAB2A (RAB2A, member RAS oncogene family) RAB2A antibody [C2C3], C-term
Purification:	Purified by antigen-affinity chromatography.

Target Details

Target:	RAB2A
---------	-------

Target Details

Alternative Name:	RAB2A, member RAS oncogene family (RAB2A Products)
Background:	<p>Members of the Rab protein family are nontransforming monomeric GTP-binding proteins of the Ras superfamily that contain 4 highly conserved regions involved in GTP binding and hydrolysis. Rabs are prenylated, membrane-bound proteins involved in vesicular fusion and trafficking. The mammalian RAB proteins show striking similarities to the <i>S. cerevisiae</i> YPT1 and SEC4 proteins, Ras-related GTP-binding proteins involved in the regulation of secretion.[supplied by OMIM]</p> <p>Cellular Localization: Endoplasmic reticulum-Golgi intermediate compartment membrane, Lipid-anchor , Melanosome , Endoplasmic reticulum membrane, Lipid-anchor (Potential) , Golgi apparatus membrane, Lipid-anchor (Potential)</p>
Molecular Weight:	24 kDa
Gene ID:	5862
UniProt:	P61019
Pathways:	SARS-CoV-2 Protein Interactome

Application Details

Application Notes:	WB: 1:500-1:3000. IHC-P: 1:100-1:1000. Optimal dilutions/concentrations should be determined by the researcher. Not tested in other applications.
Comment:	Positive Control: H1299 , HeLaS3
Restrictions:	For Research Use only

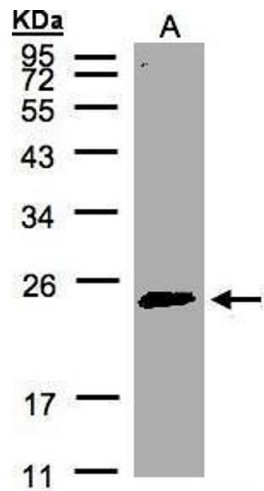
Handling

Format:	Liquid
Concentration:	0.51 mg/mL
Buffer:	0.1M Tris-Glycine (pH 7), 10 % Glycerol, 0.01 % Thimerosal
Preservative:	Thimerosal (Merthiolate)
Precaution of Use:	This product contains Thimerosal (Merthiolate): a POISONOUS AND HAZARDOUS SUBSTANCE which should be handled by trained staff only.
Storage:	4 °C,-20 °C

Handling

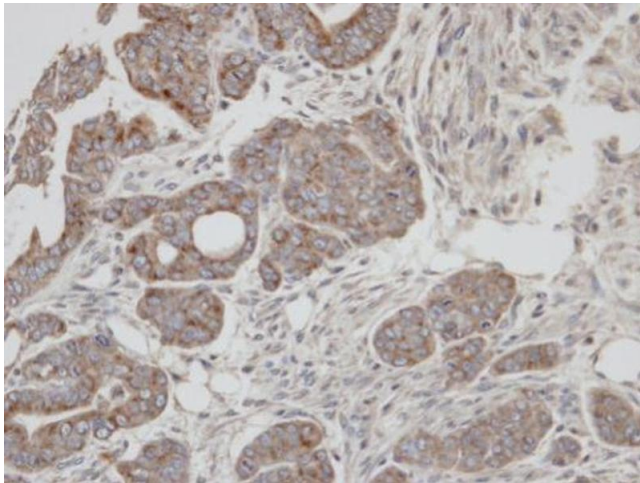
Storage Comment: Store as concentrated solution. Centrifuge briefly prior to opening vial. For short-term storage (1-2 weeks), store at 4°C. For long-term storage, aliquot and store at -20°C or below. Avoid multiple freeze-thaw cycles.

Images



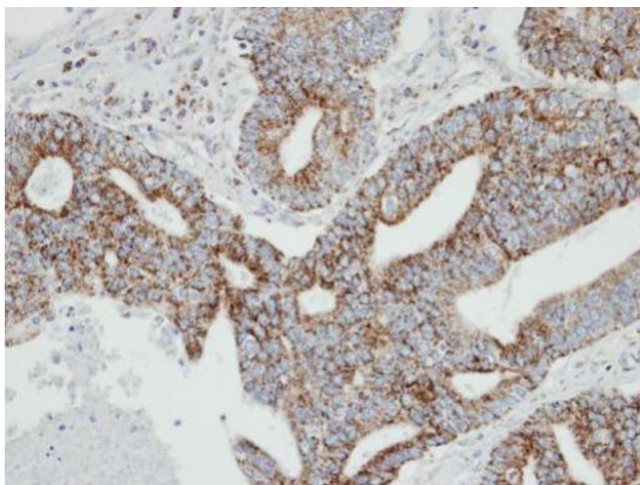
Western Blotting

Image 1. WB Image Sample(30 µg of whole cell lysate)
A:HeLa S3, 12% SDS PAGE antibody diluted at 1:500



Immunohistochemistry

Image 2. IHC-P Image Immunohistochemical analysis of paraffin-embedded N87 xenograft, using RAB2A, antibody at 1:100 dilution.



Immunohistochemistry

Image 3. IHC-P Image Immunohistochemical analysis of paraffin-embedded human endo mitral OCVA, using RAB2A, antibody at 1:100 dilution.