



[Go to Product page](#)

Datasheet for ABIN2856337
anti-SET/TAF-I antibody (N-Term)

3 Images

Overview

Quantity:	100 µL
Target:	SET/TAF-I (SET)
Binding Specificity:	N-Term
Reactivity:	Human
Host:	Rabbit
Clonality:	Polyclonal
Conjugate:	This SET/TAF-I antibody is un-conjugated
Application:	Western Blotting (WB), Immunofluorescence (IF), Immunohistochemistry (Paraffin-embedded Sections) (IHC (p)), Immunocytochemistry (ICC)

Product Details

Immunogen:	Carrier-protein conjugated synthetic peptide encompassing a sequence within the N-terminus region of human SET. The exact sequence is proprietary.
Isotype:	IgG
Cross-Reactivity:	Mouse (Murine), Xenopus tropicalis, Pig (Porcine), Chicken, Cow (Bovine)
Cross-Reactivity (Details):	Mouse (86 %), Xenopus Tropicalis (93 %), Pig (100 %), Chicken (100 %), Bovine (100 %)
Characteristics:	Rabbit Polyclonal antibody to SET isoform 2-specific (SET nuclear oncogene) SET antibody, isoform 2-specific
Purification:	Purified by antigen-affinity chromatography.

Target Details

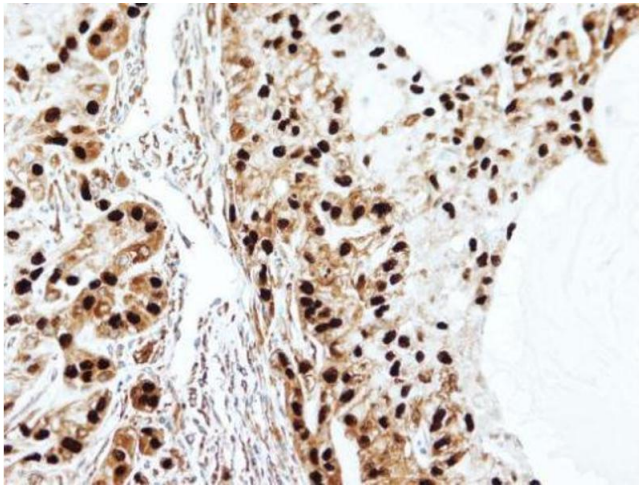
Target:	SET/TAF-I (SET)
Alternative Name:	SET (SET Products)
Background:	Cellular Localization: Cytoplasm , cytosol , Endoplasmic reticulum , Nucleus , nucleoplasm
Molecular Weight:	33 kDa
Gene ID:	6418
Pathways:	Apoptosis

Application Details

Application Notes:	Suggested dilution Reference ICC/IF 1:100-1:1000* IHC (Formalin-fixed paraffin-embedded sections) 1:100-1:1000* Western blot 1:500-1:3000* Not tested in other applications. *Optimal dilutions/concentrations should be determined by the researcher.Suggested dilutionReferenceICC/IF1:100-1:1000* IHC (Formalin-fixed paraffin-embedded sections)1:100-1:1000* Western blot1:500-1:3000*
Comment:	Positive Control: human SET-transfected 293T
Restrictions:	For Research Use only

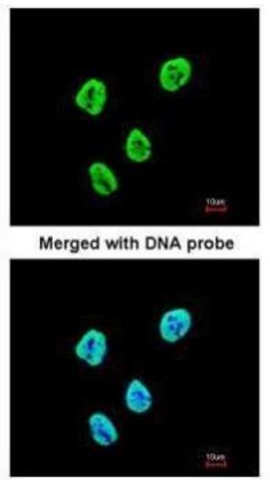
Handling

Format:	Liquid
Concentration:	0.959 mg/mL
Buffer:	0.1M Tris, 0.1M Glycine, 10 % Glycerol (pH 7). 0.01 % Thimerosal was added as a preservative.
Preservative:	Thimerosal (Merthiolate)
Precaution of Use:	This product contains Thimerosal (Merthiolate): a POISONOUS AND HAZARDOUS SUBSTANCE which should be handled by trained staff only.
Storage:	-20 °C
Storage Comment:	Keep as concentrated solution. Aliquot and store at -20°C or below. Avoid multiple freeze-thaw cycles.



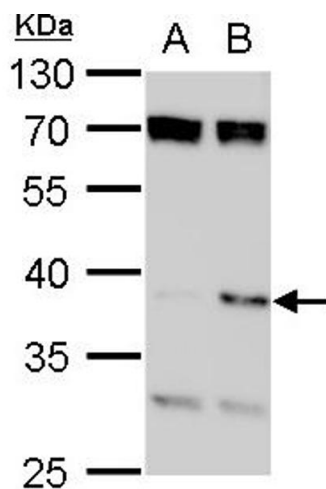
Immunohistochemistry

Image 1. IHC-P Image Immunohistochemical analysis of paraffin-embedded A549 xenograft, using SET antibody, isoform 2-specific, at 1:100 dilution.



Immunofluorescence

Image 2. ICC/IF Image Immunofluorescence analysis of paraformaldehyde-fixed HeLa, using SET antibody, isoform 2-specific, at 1:200 dilution.



Western Blotting

Image 3. WB Image SET antibody, isoform 2-specific detects SET protein by western blot analysis. A. 30 µg 293T whole cell lysate/extract B. 30 µg whole cell lysate/extract of human SET-transfected 293T cells 12 % SDS-PAGE SET antibody, isoform 2-specific, dilution: 1:1000