

Datasheet for ABIN2856339
anti-TRF1 antibody (C-Term)[Go to Product page](#)

1 Image

Overview

Quantity:	100 µL
Target:	TRF1 (TERF1)
Binding Specificity:	C-Term
Reactivity:	Human
Host:	Rabbit
Clonality:	Polyclonal
Conjugate:	This TRF1 antibody is un-conjugated
Application:	Western Blotting (WB), Immunofluorescence (IF), Immunocytochemistry (ICC)

Product Details

Immunogen:	Carrier-protein conjugated synthetic peptide encompassing a sequence within the C-terminus region of human TRF1. The exact sequence is proprietary.
Isotype:	IgG
Cross-Reactivity:	Human
Characteristics:	Rabbit polyclonal antibody to TRF1 (telomeric repeat binding factor (NIMA-interacting) 1) TRF1 antibody [C3], C-term
Purification:	Purified by antigen-affinity chromatography.

Target Details

Target:	TRF1 (TERF1)
---------	--------------

Target Details

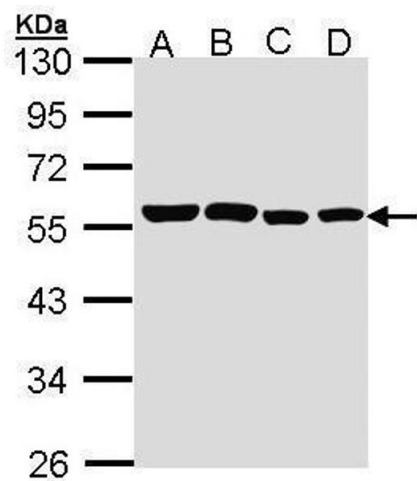
Alternative Name:	telomeric repeat binding factor 1 (TERF1 Products)
Background:	<p>This gene encodes a telomere specific protein which is a component of the telomere nucleoprotein complex. This protein is present at telomeres throughout the cell cycle and functions as an inhibitor of telomerase, acting in cis to limit the elongation of individual chromosome ends. The protein structure contains a C-terminal Myb motif, a dimerization domain near its N-terminus and an acidic N-terminus. Two transcripts of this gene are alternatively spliced products.</p> <p>Cellular Localization: Nucleus , Spindle , Telomere</p>
Molecular Weight:	50 kDa
Gene ID:	7013
UniProt:	P54274
Pathways:	Cell Division Cycle , Telomere Maintenance , Hormone Transport , Chromatin Binding , Regulation of Cell Size , Positive Regulation of Endopeptidase Activity

Application Details

Application Notes:	WB: 1:500-1:3000. ICC/IF: 1:100-1:1000. Optimal dilutions/concentrations should be determined by the researcher. Not tested in other applications.
Restrictions:	For Research Use only

Handling

Format:	Liquid
Concentration:	1 mg/mL
Buffer:	1XPBS (pH 7), 10 % Glycerol, 0.01 % Thimerosal
Preservative:	Thimerosal (Merthiolate)
Precaution of Use:	This product contains Thimerosal (Merthiolate): a POISONOUS AND HAZARDOUS SUBSTANCE which should be handled by trained staff only.
Storage:	4 °C, -20 °C
Storage Comment:	Store as concentrated solution. Centrifuge briefly prior to opening vial. For short-term storage (1-2 weeks), store at 4°C. For long-term storage, aliquot and store at -20°C or below. Avoid multiple freeze-thaw cycles.



Western Blotting

Image 1. WB Image Sample (30 ug of whole cell lysate) A: A431 , B: H1299 C: Hela D: Hep G2 , 10% SDS PAGE antibody diluted at 1:1000