

Datasheet for ABIN2856340  
**anti-PDHX antibody (C-Term)**[Go to Product page](#)

## 1 Image

## Overview

Quantity:	100 µL
Target:	PDHX
Binding Specificity:	C-Term
Reactivity:	Human
Host:	Rabbit
Clonality:	Polyclonal
Conjugate:	This PDHX antibody is un-conjugated
Application:	Western Blotting (WB)

## Product Details

Immunogen:	Carrier-protein conjugated synthetic peptide encompassing a sequence within the C-terminus region of human PDHX. The exact sequence is proprietary.
Isotype:	IgG
Cross-Reactivity:	Human
Characteristics:	Rabbit polyclonal antibody to PDHX (pyruvate dehydrogenase complex, component X) PDHX antibody [C3], C-term
Purification:	Purified by antigen-affinity chromatography.

## Target Details

Target:	PDHX
---------	------

## Target Details

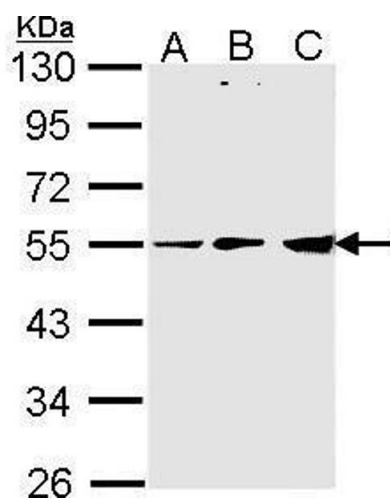
Alternative Name:	pyruvate dehydrogenase complex component X ( <a href="#">PDHX Products</a> )
Background:	<p>The PDHX gene encodes component X of the pyruvate dehydrogenase (PDH) complex. For a detailed description of the pyruvate dehydrogenase complex, see MIM 300502. The mammalian PDH complex differs from that in E. coli and from the other mammalian alpha-keto acid dehydrogenases by the presence of a 53-kD protein called protein X. Component X binds to the E3 (MIM 238331) component of the PDH complex (Robinson et al., 1990 [PubMed 2112155], Aral et al., 1997 [PubMed 9399911]).[supplied by OMIM]</p> <p>Cellular Localization: Mitochondrion matrix</p>
Molecular Weight:	54 kDa
Gene ID:	8050
UniProt:	<a href="#">O00330</a>

## Application Details

Application Notes:	WB: 1:500-1:3000. Optimal dilutions/concentrations should be determined by the researcher. Not tested in other applications.
Comment:	Positive Control: A431 , H1299 , HeLa
Restrictions:	For Research Use only

## Handling

Format:	Liquid
Concentration:	0.75 mg/mL
Buffer:	1XPBS ( pH 7), 10 % Glycerol, 0.01 % Thimerosal
Preservative:	Thimerosal (Merthiolate)
Precaution of Use:	This product contains Thimerosal (Merthiolate): a POISONOUS AND HAZARDOUS SUBSTANCE which should be handled by trained staff only.
Storage:	4 °C,-20 °C
Storage Comment:	Store as concentrated solution. Centrifuge briefly prior to opening vial. For short-term storage (1-2 weeks), store at 4°C. For long-term storage, aliquot and store at -20°C or below. Avoid multiple freeze-thaw cycles.



**Western Blotting**

**Image 1.** WB Image Sample (30 ug of whole cell lysate) A: A431 , B: H1299 C: Hela 10% SDS PAGE antibody diluted at 1:1000