



Datasheet for ABIN2856342
anti-USO1 antibody (C-Term)



[Go to Product page](#)

2 Images

Overview

| | |
|----------------------|--|
| Quantity: | 100 µL |
| Target: | USO1 |
| Binding Specificity: | C-Term |
| Reactivity: | Human |
| Host: | Rabbit |
| Clonality: | Polyclonal |
| Conjugate: | This USO1 antibody is un-conjugated |
| Application: | Western Blotting (WB), Immunohistochemistry (Paraffin-embedded Sections) (IHC (p)) |

Product Details

| | |
|------------------|---|
| Immunogen: | Carrier-protein conjugated synthetic peptide encompassing a sequence within the C-terminus region of human VDP/p115. The exact sequence is proprietary. |
| Isotype: | IgG |
| Characteristics: | Rabbit Polyclonal antibody to VDP/p115 (USO1 homolog, vesicle docking protein (yeast)) VDP/p115 antibody [C3], C-term |
| Purification: | Purified by antigen-affinity chromatography. |

Target Details

| | |
|-------------------|--|
| Target: | USO1 |
| Alternative Name: | VDP/p115 (USO1 Products) |

Target Details

Background: The protein encoded by this gene is a peripheral membrane protein which recycles between the cytosol and the Golgi apparatus during interphase. It is regulated by phosphorylation: dephosphorylated protein associates with the Golgi membrane and dissociates from the membrane upon phosphorylation. Ras-associated protein 1 recruits this protein to coat protein complex II (COPII) vesicles during budding from the endoplasmic reticulum, where it interacts with a set of COPII vesicle-associated SNAREs to form a cis-SNARE complex that promotes targeting to the Golgi apparatus. Transport from the ER to the cis/medial Golgi compartments requires the action of this gene product, GM130 and giantin in a sequential manner.

Cellular Localization: Cytoplasm , cytosol , Golgi apparatus membrane, Peripheral membrane protein

Molecular Weight: 108 kDa

Gene ID: 8615

Application Details

Application Notes: Suggested dilution Reference IHC (Formalin-fixed paraffin-embedded sections) 1:100-1:1000* Western blot 1:5000-1:20000* Not tested in other applications. *Optimal dilutions/concentrations should be determined by the researcher.Suggested dilutionReferenceIHC (Formalin-fixed paraffin-embedded sections)1:100-1:1000* Western blot1:5000-1:20000*

Comment: Positive Control: 293T , A431 , H1299 , HeLa , HepG2 , Molt-4 , Raji

Restrictions: For Research Use only

Handling

Format: Liquid

Concentration: 1 mg/mL

Buffer: 1XPBS, 10 % Glycerol (pH 7). 0.01 % Thimerosal was added as a preservative.

Preservative: Thimerosal (Merthiolate)

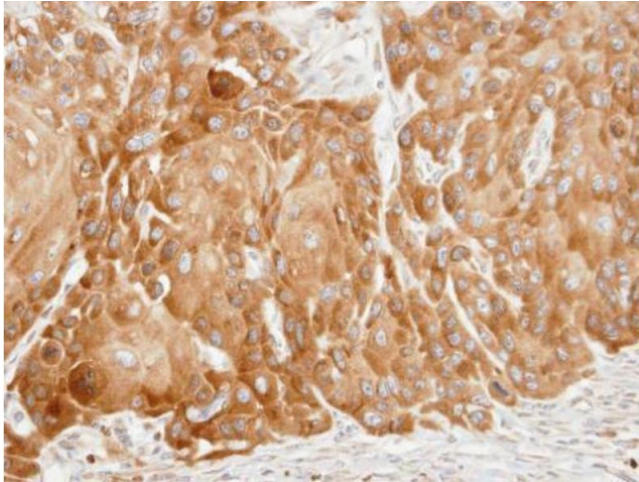
Precaution of Use: This product contains Thimerosal (Merthiolate): a POISONOUS AND HAZARDOUS SUBSTANCE which should be handled by trained staff only.

Storage: -20 °C

Handling

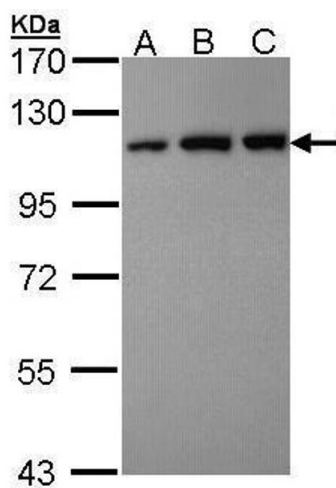
Storage Comment: Keep as concentrated solution. Aliquot and store at -20°C or below. Avoid multiple freeze-thaw cycles.

Images



Immunohistochemistry

Image 1. IHC-P Image Immunohistochemical analysis of paraffin-embedded SCC15 xenograft, using VDP/p115, antibody at 1:100 dilution.



Western Blotting

Image 2. WB Image Sample (30 ug of whole cell lysate) A: Hela B: Hep G2 , C: Molt-4 , 7.5% SDS PAGE antibody diluted at 1:10000