

Datasheet for ABIN2856346  
**anti-CYTIP antibody (N-Term)**[Go to Product page](#)

## 1 Image

## Overview

Quantity:	100 µL
Target:	CYTIP
Binding Specificity:	N-Term
Reactivity:	Human
Host:	Rabbit
Clonality:	Polyclonal
Conjugate:	This CYTIP antibody is un-conjugated
Application:	Western Blotting (WB)

## Product Details

Immunogen:	Carrier-protein conjugated synthetic peptide encompassing a sequence within the N-terminus region of human PSCDBP. The exact sequence is proprietary.
Isotype:	IgG
Cross-Reactivity:	Human
Characteristics:	Rabbit polyclonal antibody to PSCDBP (pleckstrin homology, Sec7 and coiled-coil domains, binding protein) PSCDBP antibody [N1], N-term
Purification:	Purified by antigen-affinity chromatography.

## Target Details

Target:	CYTIP
---------	-------

## Target Details

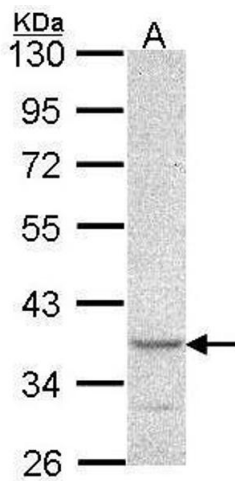
Alternative Name:	cytohesin 1 interacting protein ( <a href="#">CYTIP Products</a> )
Background:	<p>The protein encoded by this gene contains 2 leucine zipper domains and a putative C-terminal nuclear targeting signal, but does not have any hydrophobic regions. This protein is expressed weakly in resting NK and T cells. The encoded protein modulates the activation of ARF genes by CYTH1. This protein interacts with CYTH1 and SNX27 proteins and may act to sequester CYTH1 protein in the cytoplasm.</p> <p>Cellular Localization: Cytoplasm , Early endosome</p>
Molecular Weight:	40 kDa
Gene ID:	9595
UniProt:	<a href="#">O60759</a>

## Application Details

Application Notes:	WB: 1:500-1:3000. Optimal dilutions/concentrations should be determined by the researcher. Not tested in other applications.
Comment:	Positive Control: A549
Restrictions:	For Research Use only

## Handling

Format:	Liquid
Concentration:	0.51 mg/mL
Buffer:	1XPBS ( pH 7), 10 % Glycerol, 0.01 % Thimerosal
Preservative:	Thimerosal (Merthiolate)
Precaution of Use:	This product contains Thimerosal (Merthiolate): a POISONOUS AND HAZARDOUS SUBSTANCE which should be handled by trained staff only.
Storage:	4 °C,-20 °C
Storage Comment:	Store as concentrated solution. Centrifuge briefly prior to opening vial. For short-term storage (1-2 weeks), store at 4°C. For long-term storage, aliquot and store at -20°C or below. Avoid multiple freeze-thaw cycles.



Western Blotting

**Image 1.** WB Image Sample (30 ug of whole cell lysate) A:  
A549 10% SDS PAGE antibody diluted at 1:1000