

Datasheet for ABIN2856347
anti-MTA2 antibody (C-Term)[Go to Product page](#)

2 Images

Overview

| | |
|----------------------|---|
| Quantity: | 100 µL |
| Target: | MTA2 |
| Binding Specificity: | C-Term |
| Reactivity: | Human |
| Host: | Rabbit |
| Clonality: | Polyclonal |
| Conjugate: | This MTA2 antibody is un-conjugated |
| Application: | Western Blotting (WB), Immunofluorescence (IF), Immunocytochemistry (ICC) |

Product Details

| | |
|-------------------|---|
| Immunogen: | Carrier-protein conjugated synthetic peptide encompassing a sequence within the C-terminus region of human MTA2. The exact sequence is proprietary. |
| Isotype: | IgG |
| Cross-Reactivity: | Human |
| Characteristics: | Rabbit polyclonal antibody to MTA2 (metastasis associated 1 family, member 2) MTA2 antibody [C3], C-term |
| Purification: | Purified by antigen-affinity chromatography. |

Target Details

| | |
|---------|------|
| Target: | MTA2 |
|---------|------|

Target Details

| | |
|-------------------|---|
| Alternative Name: | metastasis associated 1 family member 2 (MTA2 Products) |
| Background: | <p>This gene encodes a protein that has been identified as a component of NuRD, a nucleosome remodeling deacetylase complex identified in the nucleus of human cells. It shows a very broad expression pattern and is strongly expressed in many tissues. It may represent one member of a small gene family that encode different but related proteins involved either directly or indirectly in transcriptional regulation. Their indirect effects on transcriptional regulation may include chromatin remodeling. It is closely related to another member of this family, a protein that has been correlated with the metastatic potential of certain carcinomas. These two proteins are so closely related that they share the same types of domains. These domains include two DNA binding domains, a dimerization domain, and a domain commonly found in proteins that methylate DNA. One of the proteins known to be a target protein for this gene product is p53. Deacetylation of p53 is correlated with a loss of growth inhibition in transformed cells supporting a connection between these gene family members and metastasis.</p> <p>Cellular Localization: Nucleus</p> |
| Molecular Weight: | 75 kDa |
| Gene ID: | 9219 |
| UniProt: | O94776 |
| Pathways: | Chromatin Binding |

Application Details

| | |
|--------------------|--|
| Application Notes: | WB: 1:500-1:3000. ICC/IF: 1:100-1:1000. Optimal dilutions/concentrations should be determined by the researcher. Not tested in other applications. |
| Comment: | Positive Control: 293T, A431 |
| Restrictions: | For Research Use only |

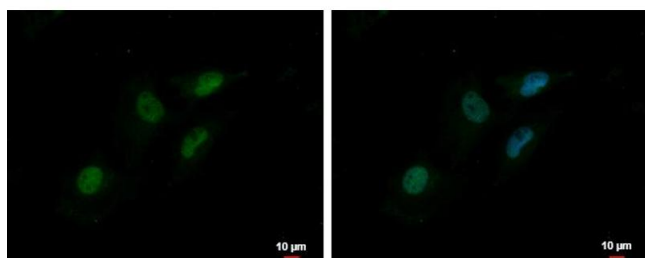
Handling

| | |
|----------------|---|
| Format: | Liquid |
| Concentration: | 0.67 mg/mL |
| Buffer: | 1XPBS (pH 7), 10 % Glycerol, 0.01 % Thimerosal |

Handling

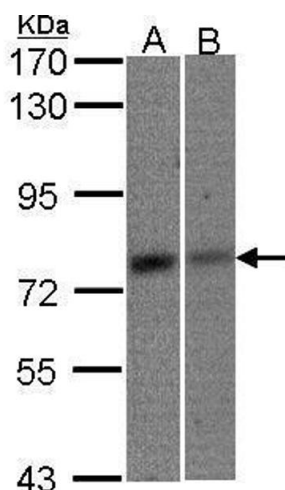
| | |
|--------------------|--|
| Preservative: | Thimerosal (Merthiolate) |
| Precaution of Use: | This product contains Thimerosal (Merthiolate): a POISONOUS AND HAZARDOUS SUBSTANCE which should be handled by trained staff only. |
| Storage: | 4 °C,-20 °C |
| Storage Comment: | Store as concentrated solution. Centrifuge briefly prior to opening vial. For short-term storage (1-2 weeks), store at 4°C. For long-term storage, aliquot and store at -20°C or below. Avoid multiple freeze-thaw cycles. |

Images



Immunofluorescence

Image 1. ICC/IF Image MTA2 antibody [C3], C-term detects MTA2 protein at nucleus by immunofluorescent analysis. Sample: HeLa cells were fixed in 4% paraformaldehyde at RT for 15 min. Green: MTA2 protein stained by MTA2 antibody [C3], C-term, diluted at 1:500. Blue: Hoechst 33342 staining.



Western Blotting

Image 2. WB Image Sample(30 µg of whole cell lysate) A:293T B:A431, 7.5% SDS PAGE antibody diluted at 1:1500