

Datasheet for ABIN2856352
anti-RASSF9 antibody (C-Term)[Go to Product page](#)

1 Image

Overview

Quantity:	100 µL
Target:	RASSF9
Binding Specificity:	C-Term
Reactivity:	Human
Host:	Rabbit
Clonality:	Polyclonal
Conjugate:	This RASSF9 antibody is un-conjugated
Application:	Western Blotting (WB)

Product Details

Immunogen:	Carrier-protein conjugated synthetic peptide encompassing a sequence within the C-terminus region of human PAMCI. The exact sequence is proprietary.
Isotype:	IgG
Cross-Reactivity:	Mouse (Murine), Rat (Rattus), Cow (Bovine)
Cross-Reactivity (Details):	Mouse (80 %), Rat (80 %), Bovine (93 %)
Characteristics:	Rabbit polyclonal antibody to PAMCI (Ras association (RalGDS/AF-6) domain family (N-terminal) member 9) PAMCI antibody [C3], C-term
Purification:	Purified by antigen-affinity chromatography.

Target Details

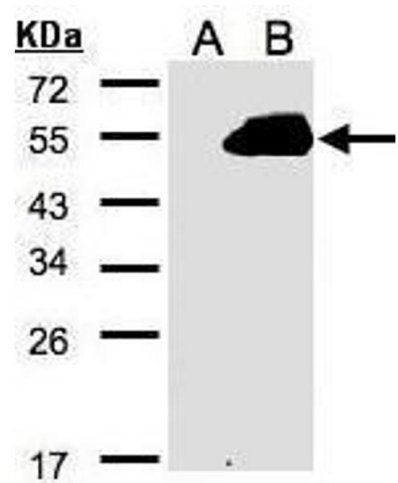
Target:	RASSF9
Alternative Name:	PAMCI (RASSF9 Products)
Background:	<p>The protein encoded by this gene localizes to perinuclear endosomes. This protein associates with peptidylglycine alpha-amidating monooxygenase, and may be involved with the trafficking of this enzyme through secretory or endosomal pathways.</p> <p>Cellular Localization: Endosome</p>
Molecular Weight:	50 kDa
Gene ID:	9182

Application Details

Application Notes:	<p>Suggested dilution Reference Western blot 1:500-1:3000* Not tested in other applications.</p> <p>*Optimal dilutions/concentrations should be determined by the researcher.Suggested dilutionReferenceWestern blot1:500-1:3000*</p>
Comment:	Positive Control: PAMCI tansfected 293T cell
Restrictions:	For Research Use only

Handling

Format:	Liquid
Concentration:	0.4 mg/mL
Buffer:	0.1M Tris, 0.1M Glycine, 10 % Glycerol (pH 7). 0.01 % Thimerosal was added as a preservative.
Preservative:	Thimerosal (Merthiolate)
Precaution of Use:	This product contains Thimerosal (Merthiolate): a POISONOUS AND HAZARDOUS SUBSTANCE which should be handled by trained staff only.
Storage:	-20 °C
Storage Comment:	Keep as concentrated solution. Aliquot and store at -20°C or below. Avoid multiple freeze-thaw cycles.



Western Blotting

Image 1. WB Image Western Blot analysis of RASSF9 expression in transfected 293T cell line by RASSF9 polyclonal antibody. A: Non-transfected lysate. B: RASSF9 transfected lysate. 12% SDS PAGE antibody diluted at 1:500