

Datasheet for ABIN2856353
anti-TOM1L1 antibody (C-Term)[Go to Product page](#)

2 Images

Overview

Quantity:	100 µL
Target:	TOM1L1
Binding Specificity:	C-Term
Reactivity:	Human
Host:	Rabbit
Clonality:	Polyclonal
Conjugate:	This TOM1L1 antibody is un-conjugated
Application:	Western Blotting (WB), Immunofluorescence (IF), Immunocytochemistry (ICC)

Product Details

Immunogen:	Carrier-protein conjugated synthetic peptide encompassing a sequence within the C-terminus region of human TOM1L1. The exact sequence is proprietary.
Isotype:	IgG
Characteristics:	Rabbit Polyclonal antibody to TOM1L1 (target of myb1 (chicken)-like 1) TOM1L1 antibody [C3], C-term
Purification:	Purified by antigen-affinity chromatography.

Target Details

Target:	TOM1L1
Alternative Name:	TOM1L1 (TOM1L1 Products)

Target Details

Background: Probable adapter protein involved in signaling pathways. Interacts with the SH2 and SH3 domains of various signaling proteins when it is phosphorylated. May promotes FYN activation, possibly by disrupting intramolecular SH3-dependent interactions.

Cellular Localization: Golgi apparatus , Golgi stack , Endosome membrane

Molecular Weight: 53 kDa

Gene ID: 10040

Application Details

Application Notes: Suggested dilution Reference ICC/IF 1:100-1:1000* Western blot 1:500-1:3000* Not tested in other applications. *Optimal dilutions/concentrations should be determined by the researcher.Suggested dilutionReferenceICC/IF1:100-1:1000* Western blot1:500-1:3000*

Comment: Positive Control: 293T , A431 , HeLa , HepG2 , Molt-4 , Raji

Restrictions: For Research Use only

Handling

Format: Liquid

Concentration: 0.8 mg/mL

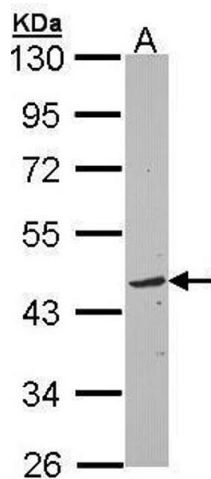
Buffer: 1XPBS, 10 % Glycerol (pH 7). 0.01 % Thimerosal was added as a preservative.

Preservative: Thimerosal (Merthiolate)

Precaution of Use: This product contains Thimerosal (Merthiolate): a POISONOUS AND HAZARDOUS SUBSTANCE which should be handled by trained staff only.

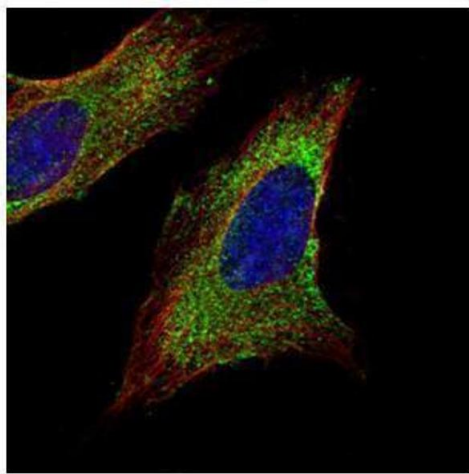
Storage: -20 °C

Storage Comment: Keep as concentrated solution. Aliquot and store at -20°C or below. Avoid multiple freeze-thaw cycles.



Western Blotting

Image 1. WB Image Sample (30 ug of whole cell lysate) A: Raji 10% SDS PAGE antibody diluted at 1:3000



Immunofluorescence

Image 2. ICC/IF Image Confocal immunofluorescence analysis (Olympus FV10i) of methanol-fixed HeLa, using TOM1L1, antibody (Green) at 1:500 dilution. Alpha-tubulin filaments were labeled with (Red) at 1:2000.