

Datasheet for ABIN2856359
anti-DLC1 antibody (N-Term)[Go to Product page](#)

2 Images

Overview

Quantity:	100 µL
Target:	DLC1
Binding Specificity:	N-Term
Reactivity:	Human
Host:	Rabbit
Clonality:	Polyclonal
Application:	Western Blotting (WB), Immunohistochemistry (Paraffin-embedded Sections) (IHC (p))

Product Details

Immunogen:	Carrier-protein conjugated synthetic peptide encompassing a sequence within the N-terminus region of human DLC1. The exact sequence is proprietary.
Isotype:	IgG
Cross-Reactivity:	Mouse (Murine)
Cross-Reactivity (Details):	Mouse (100 %)
Characteristics:	Rabbit Polyclonal antibody to DLC1 (deleted in liver cancer 1) DLC1 antibody [N1], N-term
Purification:	Purified by antigen-affinity chromatography.

Target Details

Target:	DLC1
---------	------

Target Details

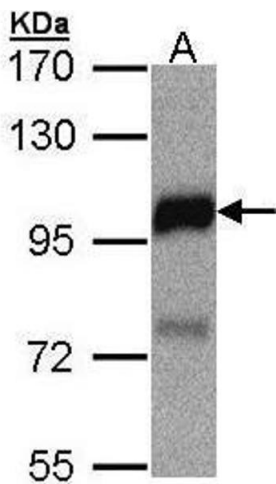
Alternative Name:	DLC1 (DLC1 Products)
Background:	<p>This gene is deleted in the primary tumor of hepatocellular carcinoma. It maps to 8p22-p21.3, a region frequently deleted in solid tumors. It is suggested that this gene is a candidate tumor suppressor gene for human liver cancer, as well as for prostate, lung, colorectal, and breast cancers. Alternative splicing at this locus results in several transcript variants encoding different isoforms.</p> <p>Cellular Localization: Cytoplasm</p>
Molecular Weight:	171 kDa
Gene ID:	10395
Pathways:	Tube Formation , Positive Regulation of Endopeptidase Activity

Application Details

Application Notes:	<p>Suggested dilution Reference IHC (Formalin-fixed paraffin-embedded sections) 1:100-1:1000* Western blot 1:500-1:3000* Not tested in other applications. *Optimal dilutions/concentrations should be determined by the researcher.Suggested dilutionReferenceIHC (Formalin-fixed paraffin-embedded sections)1:100-1:1000* Western blot1:500-1:3000*</p>
Comment:	Positive Control: H1299 , HeLaS3 , HepG2 , Molt-4 , Raji
Restrictions:	For Research Use only

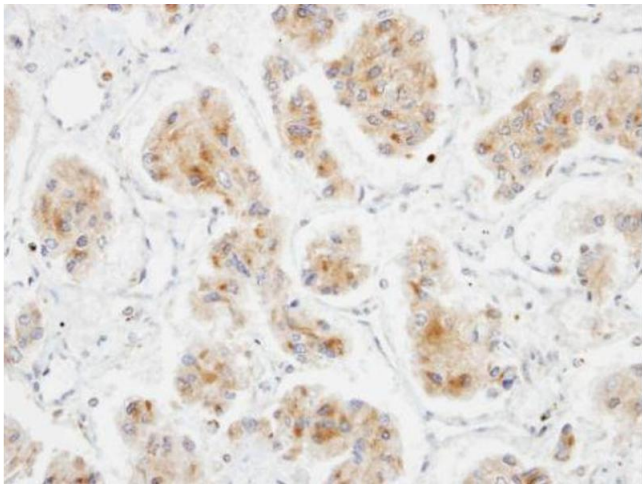
Handling

Format:	Liquid
Concentration:	0.84 mg/mL
Buffer:	1XPBS, 10 % Glycerol (pH 7). 0.01 % Thimerosal was added as a preservative.
Preservative:	Thimerosal (Merthiolate)
Precaution of Use:	This product contains Thimerosal (Merthiolate): a POISONOUS AND HAZARDOUS SUBSTANCE which should be handled by trained staff only.
Storage:	-20 °C
Storage Comment:	Keep as concentrated solution. Aliquot and store at -20°C or below. Avoid multiple freeze-thaw cycles.



Western Blotting

Image 1. WB Image Sample(30 µg of whole cell lysate)
A:MOLT4, 7.5% SDS PAGE antibody diluted at 1:1500



Immunohistochemistry

Image 2. IHC-P Image Immunohistochemical analysis of paraffin-embedded Pheochromocytoma xenograft, using DLC1, antibody at 1:100 dilution.