

Datasheet for ABIN2856363  
**anti-PPP2R5D antibody (C-Term)**[Go to Product page](#)

## 2 Images

## Overview

Quantity:	100 µL
Target:	PPP2R5D
Binding Specificity:	C-Term
Reactivity:	Human
Host:	Rabbit
Clonality:	Polyclonal
Application:	Western Blotting (WB), Immunohistochemistry (Paraffin-embedded Sections) (IHC (p))

## Product Details

Immunogen:	Carrier-protein conjugated synthetic peptide encompassing a sequence within the C-terminus region of human PPP2R5D. The exact sequence is proprietary.
Isotype:	IgG
Cross-Reactivity:	Mouse (Murine), Pig (Porcine), Rabbit, Cow (Bovine)
Cross-Reactivity (Details):	Mouse (100 %), Pig (100 %), Rabbit (100 %), Bovine (100 %)
Characteristics:	Rabbit Polyclonal antibody to PPP2R5D (protein phosphatase 2, regulatory subunit B', delta isoform) PPP2R5D antibody [C3], C-term
Purification:	Purified by antigen-affinity chromatography.

## Target Details

Target:	PPP2R5D
---------	---------

## Target Details

Alternative Name:	PPP2R5D ( <a href="#">PPP2R5D Products</a> )
Background:	<p>The product of this gene belongs to the phosphatase 2A regulatory subunit B family. Protein phosphatase 2A is one of the four major Ser/Thr phosphatases, and it is implicated in the negative control of cell growth and division. It consists of a common heteromeric core enzyme, which is composed of a catalytic subunit and a constant regulatory subunit, that associates with a variety of regulatory subunits. The B regulatory subunit might modulate substrate selectivity and catalytic activity. This gene encodes a delta isoform of the regulatory subunit B56 subfamily. Alternatively spliced transcript variants encoding different isoforms have been identified.</p> <p>Cellular Localization: Cytoplasm , Nucleus</p>
Molecular Weight:	70 kDa
Gene ID:	5528
Pathways:	<a href="#">PI3K-Akt Signaling</a> , <a href="#">Activation of Innate immune Response</a> , <a href="#">Toll-Like Receptors Cascades</a>

## Application Details

Application Notes:	Suggested dilution Reference IHC (Formalin-fixed paraffin-embedded sections) 1:100-1:1000* Western blot 1:500-1:3000* Not tested in other applications. *Optimal dilutions/concentrations should be determined by the researcher.Suggested dilutionReferenceIHC (Formalin-fixed paraffin-embedded sections)1:100-1:1000* Western blot1:500-1:3000*
Comment:	Positive Control: A549 , IMR32 , HCT116
Restrictions:	For Research Use only

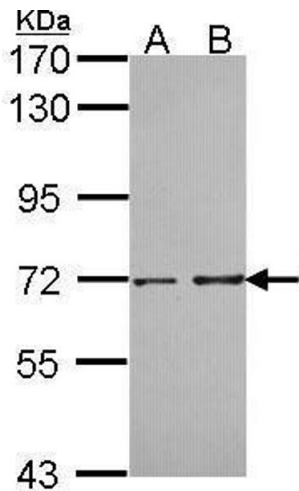
## Handling

Format:	Liquid
Concentration:	1 mg/mL
Buffer:	1XPBS, 10 % Glycerol ( pH 7). 0.01 % Thimerosal was added as a preservative.
Preservative:	Thimerosal (Merthiolate)
Precaution of Use:	This product contains Thimerosal (Merthiolate): a POISONOUS AND HAZARDOUS SUBSTANCE which should be handled by trained staff only.
Storage:	-20 °C

Handling

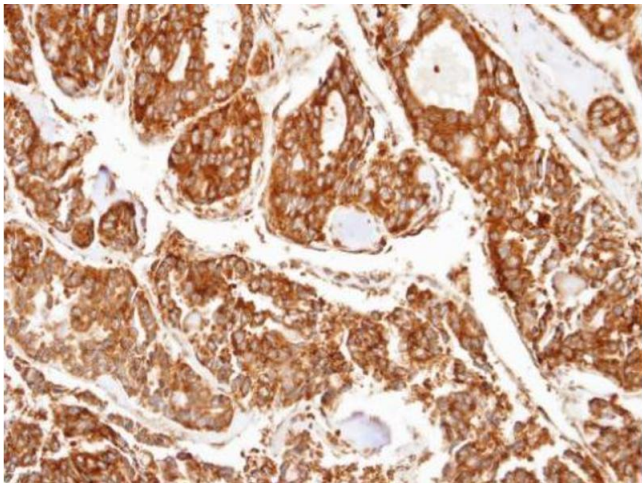
Storage Comment: Keep as concentrated solution. Aliquot and store at -20°C or below. Avoid multiple freeze-thaw cycles.

Images



Western Blotting

**Image 1.** WB Image Sample (30 ug of whole cell lysate) A: A549 B: IMR32 7.5% SDS PAGE antibody diluted at 1:1000



Immunohistochemistry

**Image 2.** IHC-P Image Immunohistochemical analysis of paraffin-embedded human thyroid cancer, using PPP2R5D, antibody at 1:100 dilution.