



[Go to Product page](#)

Datasheet for ABIN2856364
anti-ARIH2 antibody (C-Term)

3 Images

Overview

Quantity:	100 µL
Target:	ARIH2
Binding Specificity:	C-Term
Reactivity:	Human, Mouse
Host:	Rabbit
Clonality:	Polyclonal
Application:	Western Blotting (WB), Immunofluorescence (IF), Immunocytochemistry (ICC)

Product Details

Immunogen:	Carrier-protein conjugated synthetic peptide encompassing a sequence within the C-terminus region of human ARIH2. The exact sequence is proprietary.
Isotype:	IgG
Cross-Reactivity:	Rat (Rattus), Zebrafish (Danio rerio), Xenopus laevis, Xenopus tropicalis, Chicken, Cow (Bovine)
Cross-Reactivity (Details):	Rat (100 %), Zebrafish (93 %), Xenopus laevis (100 %), Xenopus Tropicalis (100 %), Chicken (100 %), Bovine (100 %)
Characteristics:	Rabbit Polyclonal antibody to ARIH2 (E3 ubiquitin-protein ligase ARIH2) ARIH2 antibody [C3], C-term
Purification:	Purified by antigen-affinity chromatography.

Target Details

Target:	ARIH2
---------	-------

Target Details

Alternative Name: ARIH2 ([ARIH2 Products](#))

Background: Cellular Localization: Nucleus

Molecular Weight: 58 kDa

Gene ID: 10425

Application Details

Application Notes: Suggested dilution Reference ICC/IF 1:100-1:1000* Western blot 1:500-1:3000* Not tested in other applications. *Optimal dilutions/concentrations should be determined by the researcher.Suggested dilutionReferenceICC/IF1:100-1:1000* Western blot1:500-1:3000*

Comment: Positive Control: HeLa , mouse muscle

Restrictions: For Research Use only

Handling

Format: Liquid

Concentration: 1 mg/mL

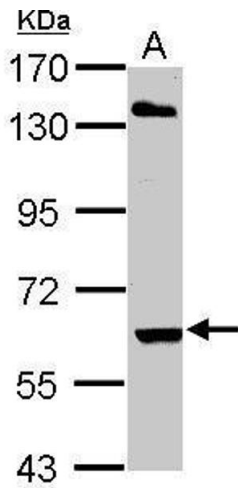
Buffer: 1XPBS, 10 % Glycerol (pH 7). 0.01 % Thimerosal was added as a preservative.

Preservative: Thimerosal (Merthiolate)

Precaution of Use: This product contains Thimerosal (Merthiolate): a POISONOUS AND HAZARDOUS SUBSTANCE which should be handled by trained staff only.

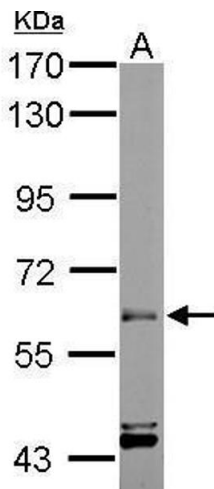
Storage: -20 °C

Storage Comment: Keep as concentrated solution. Aliquot and store at -20°C or below. Avoid multiple freeze-thaw cycles.



Western Blotting

Image 1. WB Image Sample (30 ug of whole cell lysate) A: HeLa 7.5% SDS PAGE antibody diluted at 1:1000



Western Blotting

Image 2. WB Image Sample (50 ug of whole cell lysate) A: mouse muscle 7.5% SDS PAGE antibody diluted at 1:1000



Costained with Hoechst 33342



Immunofluorescence

Image 3. ICC/IF Image Immunofluorescence analysis of paraformaldehyde-fixed A431, using ARIH2, antibody at 1:200 dilution.