

Datasheet for ABIN2856366  
**anti-IP07 antibody (C-Term)**[Go to Product page](#)

## 4 Images

## Overview

Quantity:	100 µL
Target:	IP07
Binding Specificity:	C-Term
Reactivity:	Human
Host:	Rabbit
Clonality:	Polyclonal
Application:	Western Blotting (WB), Immunohistochemistry (Paraffin-embedded Sections) (IHC (p)), Immunofluorescence (IF), Immunocytochemistry (ICC)

## Product Details

Immunogen:	Carrier-protein conjugated synthetic peptide encompassing a sequence within the C-terminus region of human Importin 7. The exact sequence is proprietary.
Isotype:	IgG
Specificity:	Knockdown/Knockout validation was supported by references (PMID:25999477)
Cross-Reactivity:	Human
Characteristics:	Rabbit Polyclonal antibody to Importin 7 (importin 7) Importin 7 antibody [C3], C-term
Purification:	Purified by antigen-affinity chromatography.
Grade:	KO Validated

## Target Details

Target:	IPO7
Alternative Name:	importin 7 ( <a href="#">IPO7 Products</a> )
Background:	<p>The importin-alpha/beta complex and the GTPase Ran mediate nuclear import of proteins with a classical nuclear localization signal. The protein encoded by this gene is a member of a class of approximately 20 potential Ran targets that share a sequence motif related to the Ran-binding site of importin-beta. Similar to importin-beta, this protein prevents the activation of Ran's GTPase by RanGAP1 and inhibits nucleotide exchange on RanGTP, and also binds directly to nuclear pore complexes where it competes for binding sites with importin-beta and transportin. This protein has a Ran-dependent transport cycle and it can cross the nuclear envelope rapidly and in both directions. At least four importin beta-like transport receptors, namely importin beta itself, transportin, RanBP5 and RanBP7, directly bind and import ribosomal proteins.</p> <p>Cellular Localization: Cytoplasm , Nucleus</p>
Molecular Weight:	120 kDa
Gene ID:	10527
UniProt:	<a href="#">O95373</a>
Pathways:	<a href="#">Protein targeting to Nucleus</a>

## Application Details

Application Notes:	WB: 1:500-1:3000. ICC/IF: 1:100-1:1000. IHC-P: 1:100-1:1000. Optimal dilutions/concentrations should be determined by the researcher. Not tested in other applications.
Comment:	Positive Control: Jurkat Validation: KO/KD
Restrictions:	For Research Use only

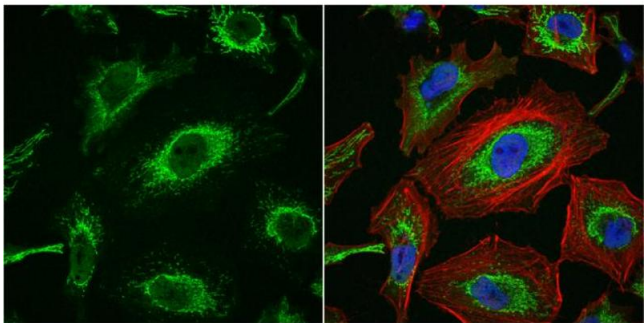
## Handling

Format:	Liquid
Concentration:	1 mg/mL
Buffer:	1XPBS ( pH 7), 10 % Glycerol, 0.01 % Thimerosal
Preservative:	Thimerosal (Merthiolate)

## Handling

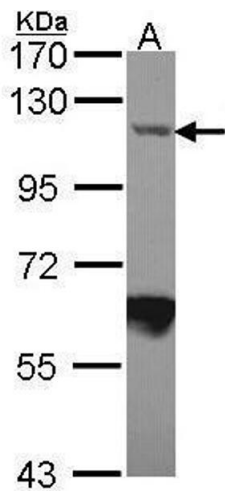
Precaution of Use:	This product contains Thimerosal (Merthiolate): a POISONOUS AND HAZARDOUS SUBSTANCE which should be handled by trained staff only.
Storage:	4 °C, -20 °C
Storage Comment:	Store as concentrated solution. Centrifuge briefly prior to opening vial. For short-term storage (1-2 weeks), store at 4°C. For long-term storage, aliquot and store at -20°C or below. Avoid multiple freeze-thaw cycles.

## Validation report #101762 for Western Blotting (WB)



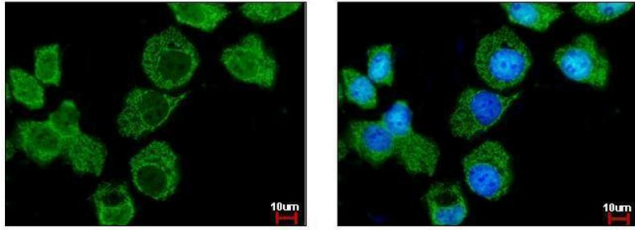
### Immunofluorescence

**Image 1.** ICC/IF Image Importin 7 antibody [C3], C-term detects Importin 7 protein at cytoplasm by immunofluorescent analysis. Sample: HeLa cells were fixed in 4% paraformaldehyde at RT for 15 min. Green: Importin 7 protein stained by Importin 7 antibody [C3], C-term, diluted at 1:200. Red: phalloidin, a cytoskeleton marker, stained by phalloidin (invitrogen, A12380) diluted at 1:200. Blue: Hoechst 33342 staining.



### Western Blotting

**Image 2.** WB Image Sample (30 ug of whole cell lysate) A: JurKat 7.5% SDS PAGE antibody diluted at 1:1000



#### Immunofluorescence

**Image 3.** ICC/IF Image Importin 7 antibody [C3], C-term detects IPO7 protein at cytoplasm by immunofluorescent analysis. Sample: A431 cells were fixed in 4% paraformaldehyde at RT for 15 min. Green: IPO7 protein stained by Importin 7 antibody [C3], C-term, diluted at 1:500. Blue: Hoechst 33343 staining.

Please check the [product details page](#) for more images. Overall 4 images are available for ABIN2856366.