

Datasheet for ABIN2856369  
**anti-CBX1 antibody (Center)**

5 Images



[Go to Product page](#)

## Overview

Quantity:	100 µL
Target:	CBX1
Binding Specificity:	Center
Reactivity:	Human, Mouse
Host:	Rabbit
Clonality:	Polyclonal
Conjugate:	This CBX1 antibody is un-conjugated
Application:	Western Blotting (WB), Immunofluorescence (IF), Immunohistochemistry (Paraffin-embedded Sections) (IHC (p)), Immunocytochemistry (ICC)

## Product Details

Immunogen:	Carrier-protein conjugated synthetic peptide encompassing a sequence within the center region of human CBX1 / HP1 beta. The exact sequence is proprietary.
Isotype:	IgG
Cross-Reactivity:	Cow (Bovine), Chicken, Chimpanzee
Cross-Reactivity (Details):	Chicken (85 %), Chimpanzee (100 %), Bovine (100 %)
Characteristics:	Rabbit Polyclonal antibody to CBX1 / HP1 beta (chromobox homolog 1) CBX1 / HP1 beta antibody
Purification:	Purified by antigen-affinity chromatography.

## Target Details

Target:	CBX1
Alternative Name:	CBX1 / HP1 beta ( <a href="#">CBX1 Products</a> )
Background:	<p>This gene encodes a highly conserved nonhistone protein, which is a member of the heterochromatin protein family . The protein is enriched in the heterochromatin and associated with centromeres. The protein has a single N-terminal chromodomain which can bind to histone proteins via methylated lysine residues, and a C-terminal chromo shadow-domain (CSD) which is responsible for the homodimerization and interaction with a number of chromatin-associated nonhistone proteins. The protein may play an important role in the epigenetic control of chromatin structure and gene expression. Several related pseudogenes are located on chromosomes 1, 3, and X. Multiple alternatively spliced variants, encoding the same protein, have been identified.</p> <p>Cellular Localization: Nucleus</p>
Molecular Weight:	21 kDa
Gene ID:	10951

## Application Details

Application Notes:	<p>Suggested dilution Reference ICC/IF 1:100-1:1000* IHC (Formalin-fixed paraffin-embedded sections) 1:100-1:1000* Western blot 1:500-1:3000* Not tested in other applications. *Optimal dilutions/concentrations should be determined by the researcher.Suggested dilutionReference ICC/IF1:100-1:1000* IHC (Formalin-fixed paraffin-embedded sections)1:100-1:1000* Western blot1:500-1:3000*</p>
Comment:	Positive Control: Raji
Restrictions:	For Research Use only

## Handling

Format:	Liquid
Concentration:	1 mg/mL
Buffer:	0.1M Tris, 0.1M Glycine, 10 % Glycerol ( pH 7). 0.01 % Thimerosal was added as a preservative.
Preservative:	Thimerosal (Merthiolate)
Precaution of Use:	This product contains Thimerosal (Merthiolate): a POISONOUS AND HAZARDOUS SUBSTANCE

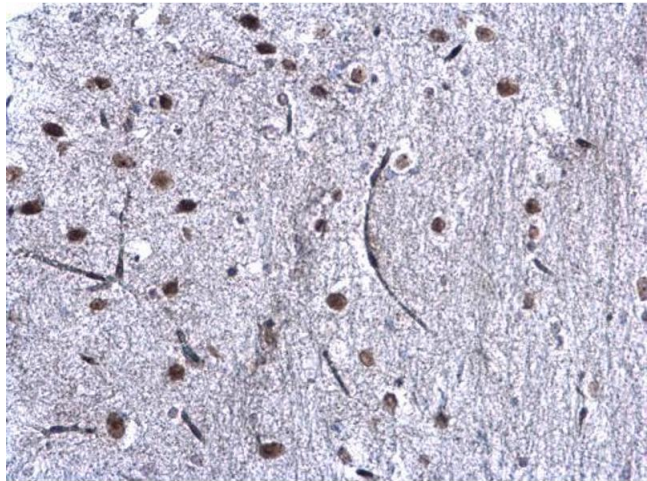
Handling

which should be handled by trained staff only.

Storage: -20 °C

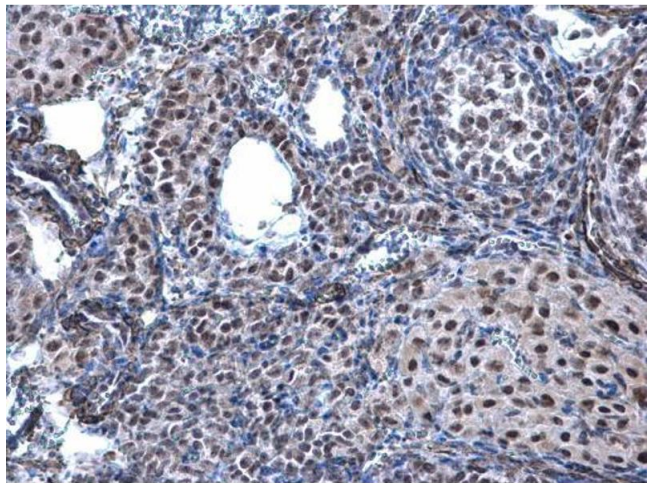
Storage Comment: Keep as concentrated solution. Aliquot and store at -20°C or below. Avoid multiple freeze-thaw cycles.

Images



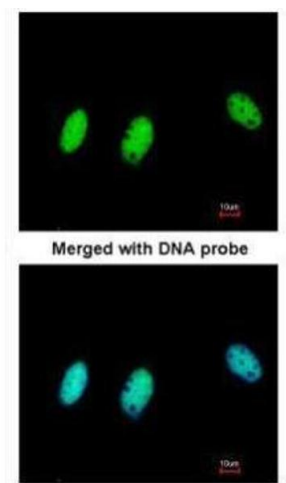
Immunohistochemistry

**Image 1.** IHC-P Image CBX1 / HP1 beta antibody detects CBX1 / HP1 beta protein at nucleus on mouse middle brain by immunohistochemical analysis. Sample: Paraffin-embedded mouse middle brain. CBX1 / HP1 beta antibody , diluted at 1:500.



Immunohistochemistry

**Image 2.** IHC-P Image CBX1 / HP1 beta antibody detects CBX1 / HP1 beta protein at nucleus on mouse ovary by immunohistochemical analysis. Sample: Paraffin-embedded mouse ovary. CBX1 / HP1 beta antibody , diluted at 1:500.



#### Immunofluorescence

**Image 3.** ICC/IF Image Immunofluorescence analysis of paraformaldehyde-fixed HeLa, using HP1-beta, antibody at 1:200 dilution.

Please check the [product details page](#) for more images. Overall 5 images are available for ABIN2856369.