

Datasheet for ABIN2856371
anti-STMN2 antibody (N-Term)

3 Images

[Go to Product page](#)

Overview

Quantity:	100 µL
Target:	STMN2
Binding Specificity:	N-Term
Reactivity:	Human
Host:	Rabbit
Clonality:	Polyclonal
Application:	Western Blotting (WB), Immunohistochemistry (Paraffin-embedded Sections) (IHC (p)), Immunofluorescence (IF), Immunocytochemistry (ICC)

Product Details

Immunogen:	Carrier-protein conjugated synthetic peptide encompassing a sequence within the N-terminus region of human STMN2. The exact sequence is proprietary.
Isotype:	IgG
Cross-Reactivity:	Human
Characteristics:	Rabbit Polyclonal antibody to STMN2 (stathmin-like 2) STMN2 antibody
Purification:	Purified by antigen-affinity chromatography.

Target Details

Target:	STMN2
Alternative Name:	stathmin 2 (STMN2 Products)

Target Details

Background: Superior cervical ganglion-10 is a neuronal growth-associated protein that shares significant amino acid sequence similarity with the phosphoprotein stathmin (MIM 151442).[supplied by OMIM]

Cellular Localization: Cytoplasm (By similarity) , Cytoplasm , perinuclear region (By similarity) , Cell projection , growth cone (By similarity) , Membrane, Peripheral membrane protein, Cytoplasmic side (Potential) , axon (By similarity)

Molecular Weight: 21 kDa

Gene ID: 11075

UniProt: [Q93045](#)

Application Details

Application Notes: WB: 1:500-1:3000. ICC/IF: 1:100-1:1000. IHC-P: 1:100-1:1000. Optimal dilutions/concentrations should be determined by the researcher. Not tested in other applications.

Comment: Positive Control: A549

Restrictions: For Research Use only

Handling

Format: Liquid

Concentration: 0.75 mg/mL

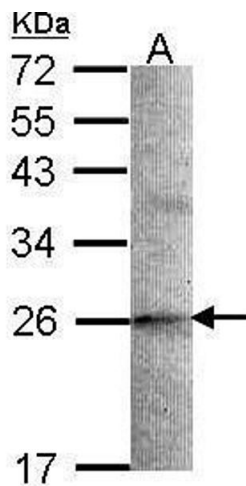
Buffer: 0.1M Tris-Glycine (pH 7), 10 % Glycerol, 0.01 % Thimerosal

Preservative: Thimerosal (Merthiolate)

Precaution of Use: This product contains Thimerosal (Merthiolate): a POISONOUS AND HAZARDOUS SUBSTANCE which should be handled by trained staff only.

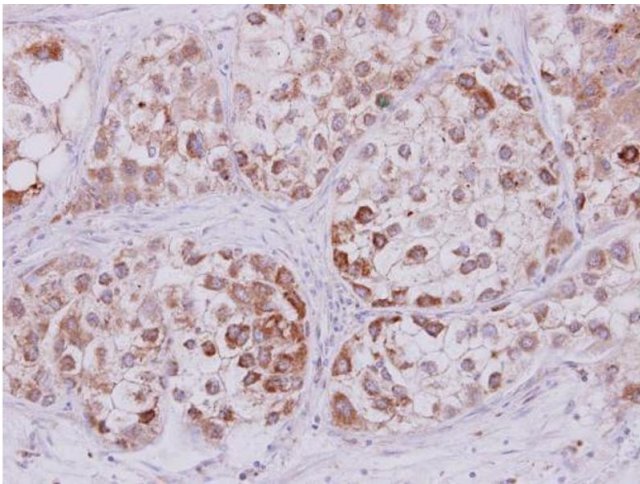
Storage: 4 °C, -20 °C

Storage Comment: Store as concentrated solution. Centrifuge briefly prior to opening vial. For short-term storage (1-2 weeks), store at 4°C. For long-term storage, aliquot and store at -20°C or below. Avoid multiple freeze-thaw cycles.



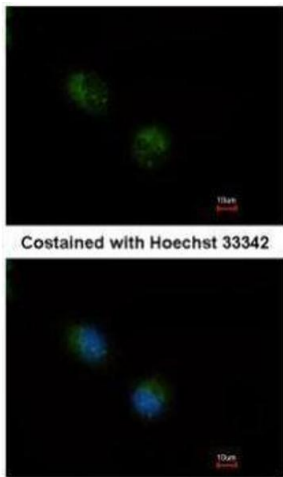
Western Blotting

Image 1. WB Image Sample (30 ug of whole cell lysate) A: A549 12% SDS PAGE antibody diluted at 1:1000



Immunohistochemistry

Image 2. IHC-P Image STMN2 antibody detects STMN2 protein at cytoplasm on human liver carcinoma by immunohistochemical analysis. Sample: Paraffin-embedded liver carcinoma. STMN2 antibody , dilution: 1:250.



Immunofluorescence

Image 3. ICC/IF Image Immunofluorescence analysis of methanol-fixed A549, using STMN2, antibody at 1:500 dilution.