

Datasheet for ABIN2856382

anti-SEC61A1 antibody (C-Term)**3** Images[Go to Product page](#)

Overview

| | |
|----------------------|--|
| Quantity: | 100 µL |
| Target: | SEC61A1 |
| Binding Specificity: | C-Term |
| Reactivity: | Human |
| Host: | Rabbit |
| Clonality: | Polyclonal |
| Conjugate: | This SEC61A1 antibody is un-conjugated |
| Application: | Western Blotting (WB), Immunofluorescence (IF), Immunohistochemistry (Paraffin-embedded Sections) (IHC (p)), Immunocytochemistry (ICC) |

Product Details

| | |
|-----------------------------|---|
| Immunogen: | Carrier-protein conjugated synthetic peptide encompassing a sequence within the C-terminus region of human SEC61A1. The exact sequence is proprietary. |
| Isotype: | IgG |
| Cross-Reactivity: | Mouse (Murine), Rat (Rattus), Zebrafish (Danio rerio), Xenopus laevis, Xenopus tropicalis, Dog (Canine), Pig (Porcine), Rhesus Monkey, Cow (Bovine) |
| Cross-Reactivity (Details): | Mouse (100 %), Rat (100 %), Zebrafish (100 %), Xenopus laevis (93 %), Xenopus Tropicalis (100 %), Dog (100 %), Pig (100 %), Rhesus Monkey (100 %), Bovine (100 %) |
| Characteristics: | Rabbit Polyclonal antibody to SEC61A1 (Sec61 alpha 1 subunit (S. cerevisiae)) SEC61A1 antibody |
| Purification: | Purified by antigen-affinity chromatography. |

Target Details

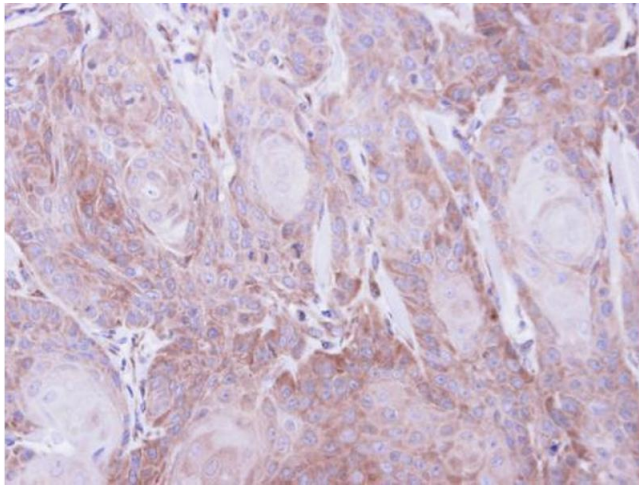
| | |
|-------------------|--|
| Target: | SEC61A1 |
| Alternative Name: | SEC61A1 (SEC61A1 Products) |
| Background: | <p>The protein encoded by this gene belongs to the SECY/SEC61- alpha family. It appears to play a crucial role in the insertion of secretory and membrane polypeptides into the endoplasmic reticulum. This protein found to be tightly associated with membrane-bound ribosomes, either directly or through adaptor proteins. This gene encodes an alpha subunit of the heteromeric SEC61 complex, which also contains beta and gamma subunits.</p> <p>Cellular Localization: Endoplasmic reticulum membrane, Multi-pass membrane protein</p> |
| Molecular Weight: | 52 kDa |
| Gene ID: | 29927 |

Application Details

| | |
|--------------------|--|
| Application Notes: | <p>Suggested dilution Reference ICC/IF 1:100-1:1000* IHC (Formalin-fixed paraffin-embedded sections) 1:100-1:1000* Western blot 1:500-1:3000* Not tested in other applications. *Optimal dilutions/concentrations should be determined by the researcher.Suggested dilutionReferenceICC/IF1:100-1:1000* IHC (Formalin-fixed paraffin-embedded sections)1:100-1:1000* Western blot1:500-1:3000*</p> |
| Comment: | Positive Control: K562 , K562 MF |
| Restrictions: | For Research Use only |

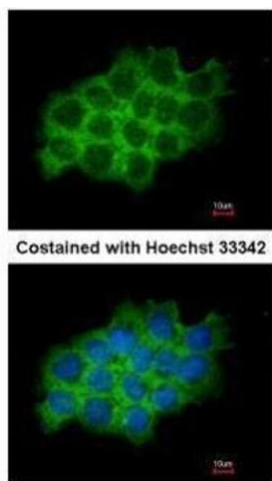
Handling

| | |
|--------------------|--|
| Format: | Liquid |
| Concentration: | 1 mg/mL |
| Buffer: | 1XPBS, 10 % Glycerol (pH 7). 0.01 % Thimerosal was added as a preservative. |
| Preservative: | Thimerosal (Merthiolate) |
| Precaution of Use: | This product contains Thimerosal (Merthiolate): a POISONOUS AND HAZARDOUS SUBSTANCE which should be handled by trained staff only. |
| Storage: | -20 °C |
| Storage Comment: | Keep as concentrated solution. Aliquot and store at -20°C or below. Avoid multiple freeze-thaw cycles. |



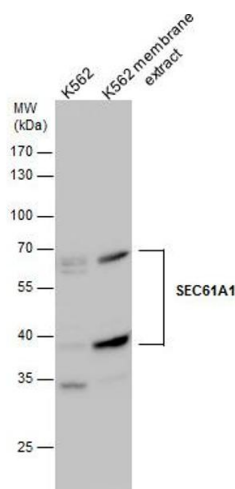
Immunohistochemistry

Image 1. IHC-P Image Immunohistochemical analysis of paraffin-embedded Cal27 xenograft, using SEC61A1, antibody at 1:500 dilution.



Immunofluorescence

Image 2. ICC/IF Image Immunofluorescence analysis of methanol-fixed A431, using SEC61A1, antibody at 1:200 dilution.



Western Blotting

Image 3. WB Image SEC61A1 antibody detects SEC61A1 protein by western blot analysis. whole cell extracts and extracts (30 µg) were separated by 10% SDS-PAGE, and the membrane was blotted with SEC61A1 antibody , at a dilution of 1:1000.