

Datasheet for ABIN2856384  
**anti-SERTAD1 antibody (N-Term)**[Go to Product page](#)

## 2 Images

## Overview

Quantity:	100 µL
Target:	SERTAD1
Binding Specificity:	N-Term
Reactivity:	Human
Host:	Rabbit
Clonality:	Polyclonal
Conjugate:	This SERTAD1 antibody is un-conjugated
Application:	Western Blotting (WB), Immunohistochemistry (Paraffin-embedded Sections) (IHC (p))

## Product Details

Immunogen:	Carrier-protein conjugated synthetic peptide encompassing a sequence within the N-terminus region of human SERTAD1. The exact sequence is proprietary.
Isotype:	IgG
Cross-Reactivity:	Human
Characteristics:	Rabbit Polyclonal antibody to SERTAD1 (SERTA domain containing 1) SERTAD1 antibody [N1N2], N-term
Purification:	Purified by antigen-affinity chromatography.

## Target Details

Target:	SERTAD1
---------	---------



## Target Details

Alternative Name:	SERTA domain containing 1 ( <a href="#">SERTAD1 Products</a> )
Background:	Acts at E2F-responsive promoters to integrate signals provided by PHD- and/or bromodomain-containing transcription factors. Stimulates E2F-1/DP-1 transcriptional activity. Renders the activity of cyclin D1/CDK4 resistant to the inhibitory effects of p16(INK4a).
Molecular Weight:	25 kDa
Gene ID:	29950
UniProt:	<a href="#">Q9UHV2</a>

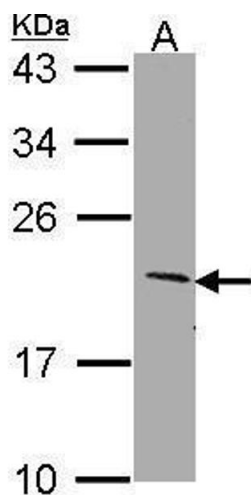
## Application Details

Application Notes:	WB: 1:500-1:3000. IHC-P: 1:100-1:1000. Optimal dilutions/concentrations should be determined by the researcher. Not tested in other applications.
Comment:	Positive Control: Molt-4
Restrictions:	For Research Use only

## Handling

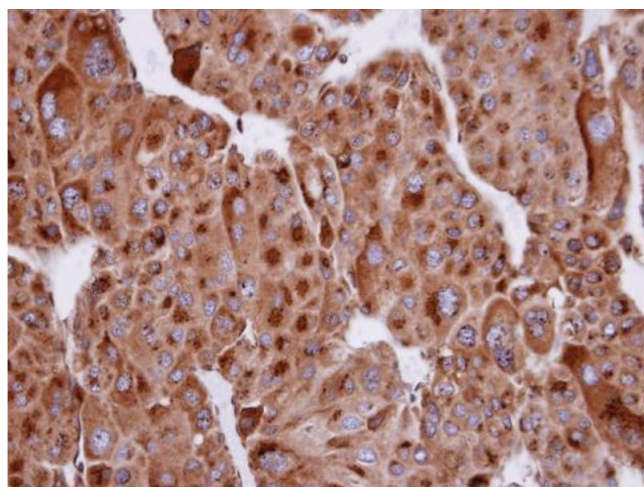
Format:	Liquid
Concentration:	1 mg/mL
Buffer:	1XPBS ( pH 7), 10 % Glycerol, 0.01 % Thimerosal
Preservative:	Thimerosal (Merthiolate)
Precaution of Use:	This product contains Thimerosal (Merthiolate): a POISONOUS AND HAZARDOUS SUBSTANCE which should be handled by trained staff only.
Storage:	4 °C,-20 °C
Storage Comment:	Store as concentrated solution. Centrifuge briefly prior to opening vial. For short-term storage (1-2 weeks), store at 4°C. For long-term storage, aliquot and store at -20°C or below. Avoid multiple freeze-thaw cycles.





#### Western Blotting

**Image 1.** WB Image Sample (30 ug of whole cell lysate) A: Molt-4 , 12% SDS PAGE SERTAD1 antibody antibody diluted at 1:1000



#### Immunohistochemistry

**Image 2.** IHC-P Image Immunohistochemical analysis of paraffin-embedded human adrenal gland tumor, using SERTAD1, antibody at 1:100 dilution.