

Datasheet for ABIN2856385

anti-MKRN1 antibody**2** Images[Go to Product page](#)

Overview

Quantity:	100 µL
Target:	MKRN1
Reactivity:	Human
Host:	Rabbit
Clonality:	Polyclonal
Conjugate:	This MKRN1 antibody is un-conjugated
Application:	Western Blotting (WB), Immunohistochemistry (Paraffin-embedded Sections) (IHC (p))

Product Details

Immunogen:	Carrier-protein conjugated synthetic peptide encompassing a sequence within the center region of human MKRN1. The exact sequence is proprietary.
Isotype:	IgG
Cross-Reactivity:	Human, Rat
Characteristics:	Rabbit Polyclonal antibody to MKRN1 (makorin ring finger protein 1) MKRN1 antibody [N2N3]
Purification:	Purified by antigen-affinity chromatography.

Target Details

Target:	MKRN1
Alternative Name:	makorin ring finger protein 1 (MKRN1 Products)

Target Details

Background: The Makorin ring finger protein-1 gene (MKRN1) is a highly transcribed, intron-containing source for a family of intronless mammalian genes encoding a novel class of zinc finger proteins. Phylogenetic analyses indicate that the MKRN1 gene is the ancestral founder of this gene family (Gray et al., 2000 [PubMed 10843807]).[supplied by OMIM]

Molecular Weight: 53 kDa

Gene ID: 23608

UniProt: [Q9UHC7](#)

Pathways: [Chromatin Binding](#)

Application Details

Application Notes: WB: 1:500-1:3000. IHC-P: 1:100-1:1000. Optimal dilutions/concentrations should be determined by the researcher. Not tested in other applications.

Comment: Positive Control: A431 , H1299 , HepG2 , rat skin

Restrictions: For Research Use only

Handling

Format: Liquid

Concentration: 0.53 mg/mL

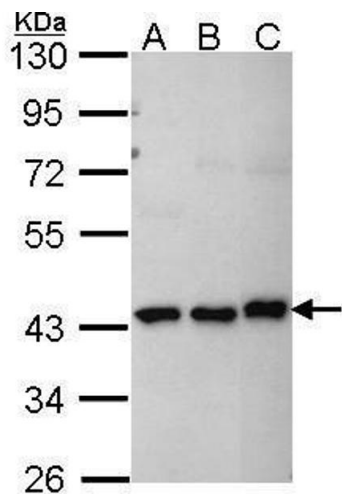
Buffer: 0.1M Tris-Glycine (pH 7), 10 % Glycerol, 0.01 % Thimerosal

Preservative: Thimerosal (Merthiolate)

Precaution of Use: This product contains Thimerosal (Merthiolate): a POISONOUS AND HAZARDOUS SUBSTANCE which should be handled by trained staff only.

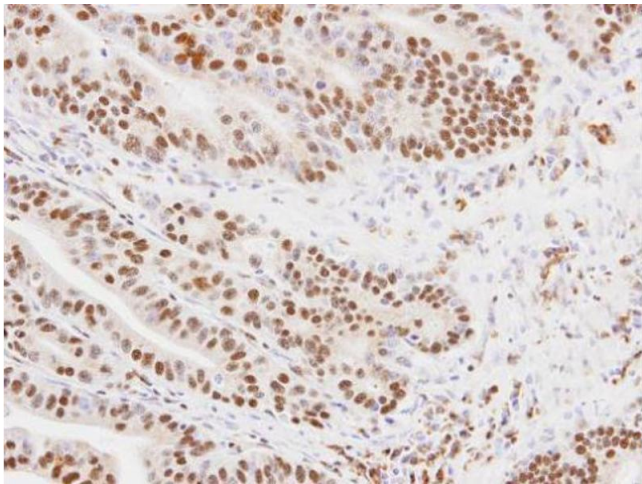
Storage: 4 °C,-20 °C

Storage Comment: Store as concentrated solution. Centrifuge briefly prior to opening vial. For short-term storage (1-2 weeks), store at 4°C. For long-term storage, aliquot and store at -20°C or below. Avoid multiple freeze-thaw cycles.



Western Blotting

Image 1. WB Image Sample (30 ug of whole cell lysate) A: A431 , B: H1299 C: Hep G2 , 10% SDS PAGE MKRN1 antibody antibody diluted at 1:1000



Immunohistochemistry

Image 2. IHC-P Image Immunohistochemical analysis of paraffin-embedded PC14 xenograft, using MKRN1, antibody at 1:100 dilution.