

Datasheet for ABIN2856387
anti-FLVCR antibody (C-Term)[Go to Product page](#)

1 Image

Overview

Quantity:	100 µL
Target:	FLVCR (FLVCR1)
Binding Specificity:	C-Term
Reactivity:	Human
Host:	Rabbit
Clonality:	Polyclonal
Conjugate:	This FLVCR antibody is un-conjugated
Application:	Western Blotting (WB)

Product Details

Immunogen:	Carrier-protein conjugated synthetic peptide encompassing a sequence within the C-terminus region of human FLVCR. The exact sequence is proprietary.
Isotype:	IgG
Cross-Reactivity:	Human
Characteristics:	Rabbit polyclonal antibody to FLVCR1 (feline leukemia virus subgroup C cellular receptor 1) FLVCR antibody [C3], C-term
Purification:	Purified by antigen-affinity chromatography.

Target Details

Target:	FLVCR (FLVCR1)
---------	----------------

Target Details

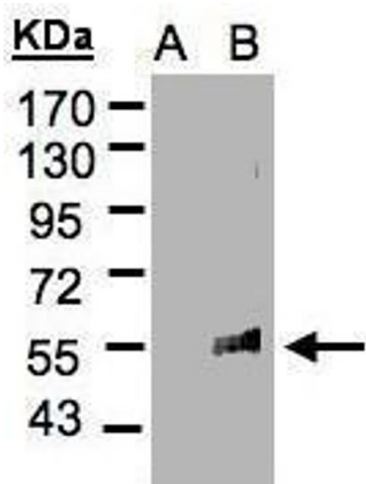
Alternative Name:	feline leukemia virus subgroup C cellular receptor 1 (FLVCR1 Products)
Background:	The FLVCR1 gene encodes the feline leukemia virus subgroup C receptor 1, a heme-transporter protein (Quigley et al., 2004 [PubMed 15369674]).[supplied by OMIM] Cellular Localization: Cell membrane, Multi-pass membrane protein
Molecular Weight:	60 kDa
Gene ID:	28982
UniProt:	Q9Y5Y0
Pathways:	Transition Metal Ion Homeostasis

Application Details

Application Notes:	WB: 1:500-1:3000. Optimal dilutions/concentrations should be determined by the researcher. Not tested in other applications.
Comment:	Positive Control: FLVCR1 transfected 293T
Restrictions:	For Research Use only

Handling

Format:	Liquid
Concentration:	0.71 mg/mL
Buffer:	0.1M Tris-Glycine (pH 7), 10 % Glycerol, 0.01 % Thimerosal
Preservative:	Thimerosal (Merthiolate)
Precaution of Use:	This product contains Thimerosal (Merthiolate): a POISONOUS AND HAZARDOUS SUBSTANCE which should be handled by trained staff only.
Storage:	4 °C, -20 °C
Storage Comment:	Store as concentrated solution. Centrifuge briefly prior to opening vial. For short-term storage (1-2 weeks), store at 4°C. For long-term storage, aliquot and store at -20°C or below. Avoid multiple freeze-thaw cycles.



Western Blotting

Image 1. WB Image Western Blot analysis of FLVCR1 expression in transfected 293T cell line by FLVCR1 polyclonal antibody. A: Non-transfected lysate. B: FLVCR1 transfected lysate. 7.5% SDS PAGE antibody diluted at 1:500