

Datasheet for ABIN2856390
anti-CORO1C antibody (C-Term)



[Go to Product page](#)

3 Images

Overview

Quantity:	100 µL
Target:	CORO1C
Binding Specificity:	C-Term
Reactivity:	Human
Host:	Rabbit
Clonality:	Polyclonal
Conjugate:	This CORO1C antibody is un-conjugated
Application:	Western Blotting (WB), Immunofluorescence (IF), Immunohistochemistry (Paraffin-embedded Sections) (IHC (p)), Immunocytochemistry (ICC)

Product Details

Immunogen:	Carrier-protein conjugated synthetic peptide encompassing a sequence within the C-terminus region of human Coronin 1C. The exact sequence is proprietary.
Isotype:	IgG
Cross-Reactivity:	Human, Mouse
Characteristics:	Rabbit Polyclonal antibody to Coronin 1C (coronin, actin binding protein, 1C) Coronin 1C antibody [C3], C-term
Purification:	Purified by antigen-affinity chromatography.
Grade:	KO Validated

Target Details

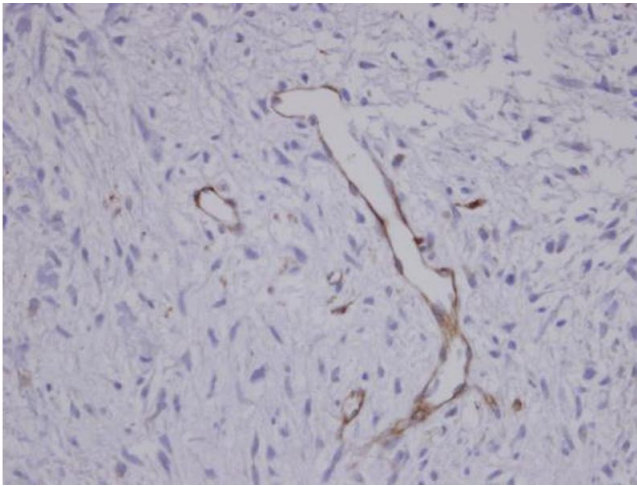
Target:	COR01C
Alternative Name:	coronin 1C (COR01C Products)
Background:	This gene encodes a member of the WD repeat protein family. WD repeats are minimally conserved regions of approximately 40 amino acids typically bracketed by gly-his and trp-asp (GH-WD), which may facilitate formation of heterotrimeric or multiprotein complexes. Members of this family are involved in a variety of cellular processes, including cell cycle progression, signal transduction, apoptosis, and gene regulation.
Molecular Weight:	53 kDa
Gene ID:	23603
UniProt:	Q9ULV4

Application Details

Application Notes:	WB: 1:500-1:3000. ICC/IF: 1:100-1:1000. IHC-P: 1:100-1:1000. Optimal dilutions/concentrations should be determined by the researcher. Not tested in other applications.
Comment:	Positive Control: Neuro2A , C8D30 , NIH-3T3 , Raw264.7 , C2C12 , 293T , A431 , HeLa , HepG2 Validation: KO/KD
Restrictions:	For Research Use only

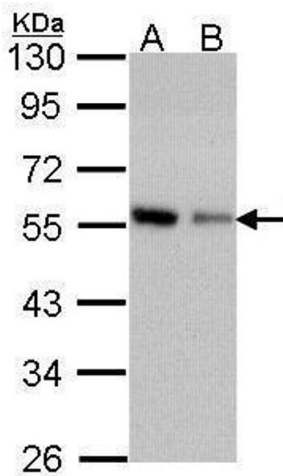
Handling

Format:	Liquid
Concentration:	1 mg/mL
Buffer:	1XPBS (pH 7), 1 % BSA, 20 % Glycerol, 0.01 % Thimerosal
Preservative:	Thimerosal (Merthiolate)
Precaution of Use:	This product contains Thimerosal (Merthiolate): a POISONOUS AND HAZARDOUS SUBSTANCE which should be handled by trained staff only.
Storage:	4 °C,-20 °C
Storage Comment:	Store as concentrated solution. Centrifuge briefly prior to opening vial. For short-term storage (1-2 weeks), store at 4°C. For long-term storage, aliquot and store at -20°C or below. Avoid multiple freeze-thaw cycles.



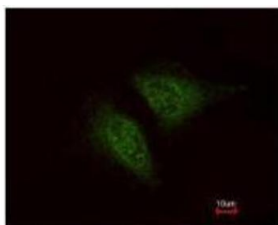
Immunohistochemistry

Image 1. IHC-P Image Immunohistochemical analysis of paraffin-embedded human Sarcoma meta to brain Blood Vessel, using COR01C , antibody at 1:100 dilution.

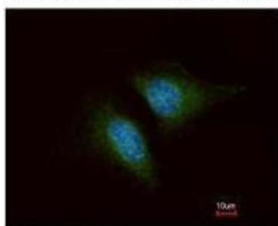


Western Blotting

Image 2. WB Image Sample (30 ug of whole cell lysate) A: A431 , B: H1299 10% SDS PAGE antibody diluted at 1:1000



Costained with Hoechst 33342



Immunofluorescence

Image 3. ICC/IF Image Immunofluorescence analysis of methanol-fixed HeLa, using Coronin 1C, antibody at 1:200 dilution.