

Datasheet for ABIN2856393

anti-EIF2S2 antibody**6** Images[Go to Product page](#)

Overview

| | |
|--------------|--|
| Quantity: | 100 µL |
| Target: | EIF2S2 |
| Reactivity: | Human |
| Host: | Rabbit |
| Clonality: | Polyclonal |
| Conjugate: | This EIF2S2 antibody is un-conjugated |
| Application: | Western Blotting (WB), Immunofluorescence (IF), Immunohistochemistry (Paraffin-embedded Sections) (IHC (p)), Immunoprecipitation (IP), Immunocytochemistry (ICC) |

Product Details

| | |
|-------------------|--|
| Immunogen: | Recombinant protein encompassing a sequence within the center region of human EIF2 beta. The exact sequence is proprietary. |
| Isotype: | IgG |
| Specificity: | Knockdown/Knockout validation was supported by references (PMID:26990993) |
| Cross-Reactivity: | Human, Mouse, Rat |
| Characteristics: | Rabbit Polyclonal antibody to EIF2 beta (eukaryotic translation initiation factor 2, subunit 2 beta, 38 kDa) EIF2 beta antibody |
| Purification: | Purified by antigen-affinity chromatography. |
| Grade: | KO Validated |

Target Details

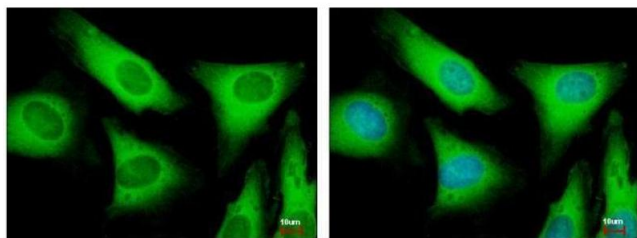
| | |
|-------------------|---|
| Target: | EIF2S2 |
| Alternative Name: | eukaryotic translation initiation factor 2 subunit beta (EIF2S2 Products) |
| Background: | Eukaryotic translation initiation factor 2 (EIF-2) functions in the early steps of protein synthesis by forming a ternary complex with GTP and initiator tRNA and binding to a 40S ribosomal subunit. EIF-2 is composed of three subunits, alpha, beta, and gamma, with the protein encoded by this gene representing the beta subunit. The beta subunit catalyzes the exchange of GDP for GTP, which recycles the EIF-2 complex for another round of initiation. |
| Molecular Weight: | 38 kDa |
| Gene ID: | 8894 |
| UniProt: | P20042 |

Application Details

| | |
|--------------------|---|
| Application Notes: | WB: 1:500-1:3000. ICC/IF: 1:100-1:1000. IHC-P: 1:100-1:1000. Optimal dilutions/concentrations should be determined by the researcher. Not tested in other applications. |
| Comment: | Positive Control: 293T , A431 , H1299 , HeLa , Mouse liver , PC-12 , Rat2 Validation: KO/KD |
| Restrictions: | For Research Use only |

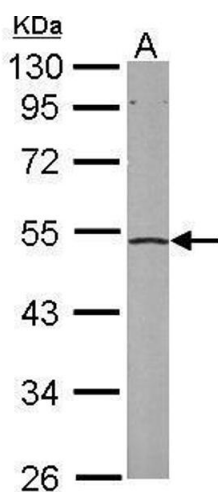
Handling

| | |
|--------------------|--|
| Format: | Liquid |
| Concentration: | 1 mg/mL |
| Buffer: | 0.1M Tris-Glycine (pH 7), 10 % Glycerol, 0.01 % Thimerosal |
| Preservative: | Thimerosal (Merthiolate) |
| Precaution of Use: | This product contains Thimerosal (Merthiolate): a POISONOUS AND HAZARDOUS SUBSTANCE which should be handled by trained staff only. |
| Storage: | 4 °C, -20 °C |
| Storage Comment: | Store as concentrated solution. Centrifuge briefly prior to opening vial. For short-term storage (1-2 weeks), store at 4°C. For long-term storage, aliquot and store at -20°C or below. Avoid multiple freeze-thaw cycles. |



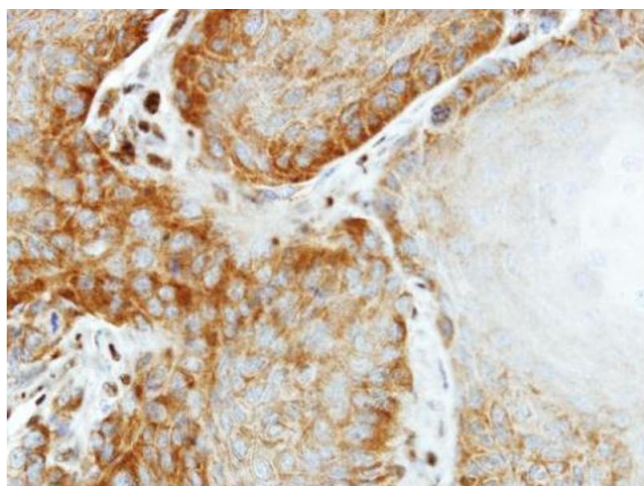
Immunofluorescence

Image 1. ICC/IF Image EIF2 beta antibody detects EIF2S2 protein at cytoplasm by immunofluorescent analysis. Sample: HeLa cells were fixed in 4% paraformaldehyde at RT for 15 min. Green: EIF2S2 protein stained by EIF2 beta antibody, diluted at 1:500. Blue: Hoechst 33343 staining.



Western Blotting

Image 2. WB Image Sample (50 ug of whole cell lysate) A: mouse liver 10% SDS PAGE antibody diluted at 1:1000



Immunohistochemistry

Image 3. IHC-P Image Immunohistochemical analysis of paraffin-embedded SG xenograft, using EIF2 beta, antibody at 1:500 dilution.

Please check the [product details page](#) for more images. Overall 6 images are available for ABIN2856393.