

Datasheet for ABIN2856394

anti-IL1RN antibody

6 Images

1 Publication

[Go to Product page](#)

Overview

Quantity:	100 µL
Target:	IL1RN
Reactivity:	Human
Host:	Rabbit
Clonality:	Polyclonal
Conjugate:	This IL1RN antibody is un-conjugated
Application:	Western Blotting (WB), Immunocytochemistry (ICC), Immunofluorescence (IF), Immunohistochemistry (Paraffin-embedded Sections) (IHC (p))

Product Details

Immunogen:	Recombinant protein encompassing a sequence within the center region of human IL1 Receptor antagonist. The exact sequence is proprietary.
Isotype:	IgG
Cross-Reactivity:	Human, Mouse, Rat
Characteristics:	Rabbit Polyclonal antibody to IL1 Receptor antagonist (interleukin 1 receptor antagonist) IL1 Receptor antagonist antibody
Purification:	Purified by antigen-affinity chromatography.

Target Details

Target:	IL1RN
Alternative Name:	interleukin 1 receptor antagonist (IL1RN Products)

Target Details

Background:	<p>The protein encoded by this gene is a member of the interleukin 1 cytokine family. This protein inhibits the activities of interleukin 1, alpha (IL1A) and interleukin 1, beta (IL1B), and modulates a variety of interleukin 1 related immune and inflammatory responses. This gene and five other closely related cytokine genes form a gene cluster spanning approximately 400 kb on chromosome 2. A polymorphism of this gene is reported to be associated with increased risk of osteoporotic fractures and gastric cancer. Four alternatively spliced transcript variants encoding distinct isoforms have been reported.</p> <p>Cellular Localization: Isoform 1: Secreted , Isoform 2: Cytoplasm , Isoform 3: Cytoplasm , Isoform 4: Cytoplasm</p>
Molecular Weight:	20 kDa
Gene ID:	3557
UniProt:	P18510
Pathways:	NF-kappaB Signaling , Hormone Transport , Cancer Immune Checkpoints

Application Details

Application Notes:	WB: 1:500-1:3000. ICC/IF: 1:100-1:1000. IHC-P: 1:100-1:1000. Optimal dilutions/concentrations should be determined by the researcher. Not tested in other applications.
Comment:	Positive Control: Neuro2A whole , C8D30 , NIH-3T3 , Raw264.7 , C2C12 , PC-12 Validation: Orthogonal
Restrictions:	For Research Use only

Handling

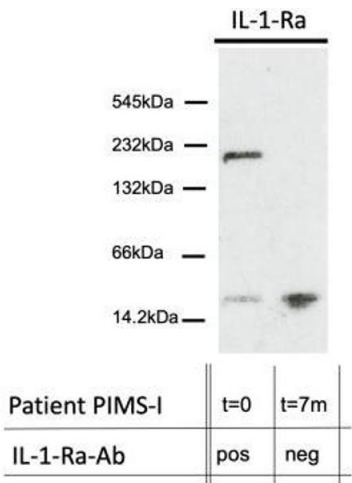
Format:	Liquid
Concentration:	0.86 mg/mL
Buffer:	1XPBS (pH 7), 20 % Glycerol, 0.025 % ProClin 300
Preservative:	ProClin
Precaution of Use:	This product contains ProClin: a POISONOUS AND HAZARDOUS SUBSTANCE which should be handled by trained staff only.
Storage:	4 °C,-20 °C
Storage Comment:	Store as concentrated solution. Centrifuge briefly prior to opening vial. For short-term storage

(1-2 weeks), store at 4°C. For long-term storage, aliquot and store at -20°C or below. Avoid multiple freeze-thaw cycles.

Publications

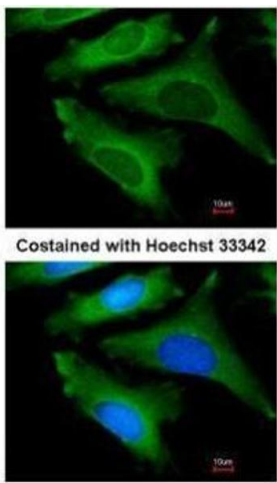
Product cited in: Pfeifer, Thurner, Kessel, Fadle, Kheiroddin, Regitz, Hoffmann, Kos, Preuss, Fischer, Roemer, Lohse, Heyne, Detemple, Fedlmeier, Juenger, Sauer, Meyer, Rohrer, Wittkowski, Becker, Masjosthusmann, Bals et al.: "Autoantibodies against interleukin-1 receptor antagonist in multisystem inflammatory syndrome in children: a multicentre, retrospective, cohort study. ..." in: **The Lancet. Rheumatology**, Vol. 4, Issue 5, pp. e329-e337, (2022) ([PubMed](#)).

Images



Western Blotting

Image 1. WB of IL-1-Ra of total plasma protein in a native, gradient gel under non-reducing conditions of patient MIS-C-I at presentation with acute inflammation and seropositive for IL-1-Ra-Abs of IgG class and 7 months later without IL-1-Ra-Abs. Source: DOI 10.1016/S2665-9913(22)00064-9



Immunofluorescence

Image 2. ICC/IF Image Immunofluorescence analysis of methanol-fixed HeLa, using IL1ra antagonist , antibody at 1:200 dilution.

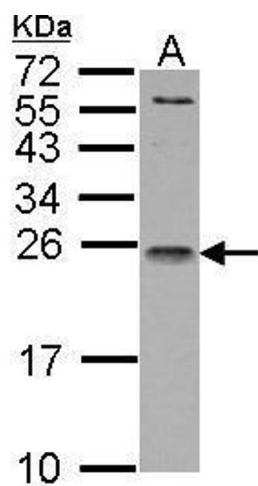
**Western Blotting**

Image 3. WB Image IL1 Receptor antagonist antibody detects IL1RN protein by Western blot analysis. A. 30 µg Raji whole cell lysate/extract 15 % SDS-PAGE IL1 Receptor antagonist antibody , dilution: 1:1000

Please check the [product details page](#) for more images. Overall 6 images are available for ABIN2856394.