

Datasheet for ABIN2856398

anti-EEF1B2 antibody

5 Images

[Go to Product page](#)

Overview

Quantity:	100 µL
Target:	EEF1B2
Reactivity:	Human
Host:	Rabbit
Clonality:	Polyclonal
Conjugate:	This EEF1B2 antibody is un-conjugated
Application:	Western Blotting (WB), Immunofluorescence (IF), Immunocytochemistry (ICC), Immunohistochemistry (Paraffin-embedded Sections) (IHC (p))

Product Details

Immunogen:	Recombinant protein encompassing a sequence within the center region of human EEF1B2. The exact sequence is proprietary.
Isotype:	IgG
Cross-Reactivity:	Human, Mouse
Characteristics:	Rabbit Polyclonal antibody to EEF1B2 (eukaryotic translation elongation factor 1 beta 2) EEF1B2 antibody [N1C3]
Purification:	Purified by antigen-affinity chromatography.

Target Details

Target:	EEF1B2
Alternative Name:	eukaryotic translation elongation factor 1 beta 2 (EEF1B2 Products)

Target Details

Background: This gene encodes a translation elongation factor. The protein is a guanine nucleotide exchange factor involved in the transfer of aminoacylated tRNAs to the ribosome. Alternative splicing results in three transcript variants which differ only in the 5' UTR.

Molecular Weight: 25 kDa

Gene ID: 1933

UniProt: [P24534](#)

Application Details

Application Notes: WB: 1:1000-1:10000. ICC/IF: 1:100-1:1000. IHC-P: 1:100-1:1000. Optimal dilutions/concentrations should be determined by the researcher. Not tested in other applications.

Comment: Positive Control: Mouse brain , A431 , H1299 , HeLaS3

Restrictions: For Research Use only

Handling

Format: Liquid

Concentration: 1 mg/mL

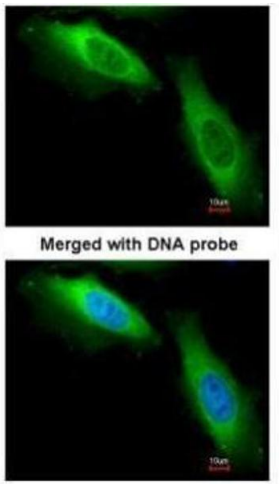
Buffer: 0.1M Tris-Glycine (pH 7), 10 % Glycerol, 0.01 % Thimerosal

Preservative: Thimerosal (Merthiolate)

Precaution of Use: This product contains Thimerosal (Merthiolate): a POISONOUS AND HAZARDOUS SUBSTANCE which should be handled by trained staff only.

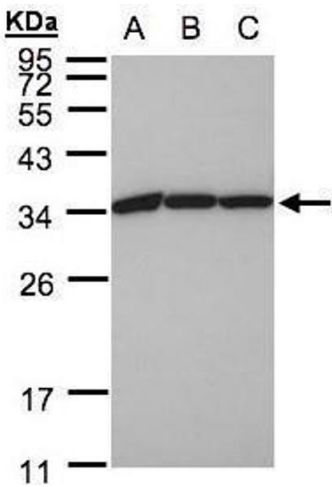
Storage: 4 °C,-20 °C

Storage Comment: Store as concentrated solution. Centrifuge briefly prior to opening vial. For short-term storage (1-2 weeks), store at 4°C. For long-term storage, aliquot and store at -20°C or below. Avoid multiple freeze-thaw cycles.



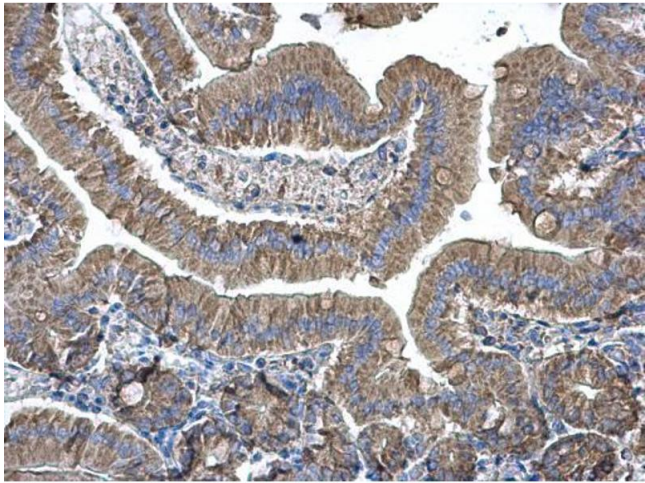
Immunofluorescence

Image 1. ICC/IF Image Immunofluorescence analysis of paraformaldehyde-fixed HeLa, using EF-1-beta2, antibody at 1:200 dilution.



Western Blotting

Image 2. WB Image Sample(30 ug whole cell lysate) A:A431, B:H1299 C:HeLa S3, 12% SDS PAGE antibody diluted at 1:1000



Immunohistochemistry

Image 3. IHC-P Image EEf1B2 antibody [N1C3] detects EEf1B2 protein at cytoplasm on mouse duodenum by immunohistochemical analysis. Sample: Paraffin-embedded mouse duodenum. EEf1B2 antibody [N1C3] , diluted at 1:500.

Please check the [product details page](#) for more images. Overall 5 images are available for ABIN2856398.