



[Go to Product page](#)

Datasheet for ABIN2856401
anti-PTGES3 antibody

3 Images

Overview

Quantity:	100 µL
Target:	PTGES3
Reactivity:	Human
Host:	Rabbit
Clonality:	Polyclonal
Conjugate:	This PTGES3 antibody is un-conjugated
Application:	Western Blotting (WB), Immunohistochemistry (Paraffin-embedded Sections) (IHC (p))

Product Details

Immunogen:	Recombinant protein encompassing a sequence within the center region of human p23. The exact sequence is proprietary.
Isotype:	IgG
Cross-Reactivity:	Human, Mouse
Characteristics:	Rabbit Polyclonal antibody to p23 (prostaglandin E synthase 3 (cytosolic)) p23 antibody [N1C3]
Purification:	Purified by antigen-affinity chromatography.
Grade:	KO Validated

Target Details

Target:	PTGES3
---------	--------

Target Details

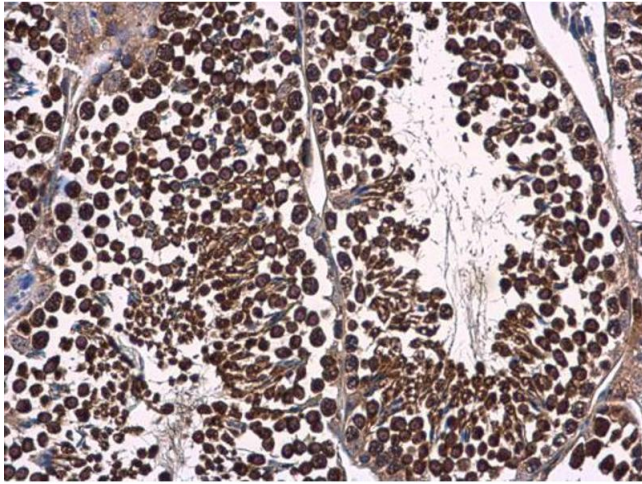
Alternative Name:	prostaglandin E synthase 3 (PTGES3 Products)
Background:	Molecular chaperone that localizes to genomic response elements in a hormone-dependent manner and disrupts receptor-mediated transcriptional activation, by promoting disassembly of transcriptional regulatory complexes. Cellular Localization: Cytoplasm
Molecular Weight:	19 kDa
Gene ID:	10728
UniProt:	Q15185
Pathways:	Intracellular Steroid Hormone Receptor Signaling Pathway , Cellular Glucan Metabolic Process

Application Details

Application Notes:	WB: 1:500-1:20000. IHC-P: 1:100-1:1000. Optimal dilutions/concentrations should be determined by the researcher. Not tested in other applications.
Comment:	Positive Control: 293T , Mouse brain , 293T Validation: KO/KD
Restrictions:	For Research Use only

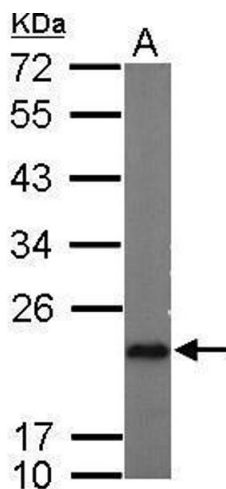
Handling

Format:	Liquid
Concentration:	1 mg/mL
Buffer:	1XPBS (pH 7), 1 % BSA, 20 % Glycerol, 0.01 % Thimerosal
Preservative:	Thimerosal (Merthiolate)
Precaution of Use:	This product contains Thimerosal (Merthiolate): a POISONOUS AND HAZARDOUS SUBSTANCE which should be handled by trained staff only.
Storage:	4 °C,-20 °C
Storage Comment:	Store as concentrated solution. Centrifuge briefly prior to opening vial. For short-term storage (1-2 weeks), store at 4°C. For long-term storage, aliquot and store at -20°C or below. Avoid multiple freeze-thaw cycles.



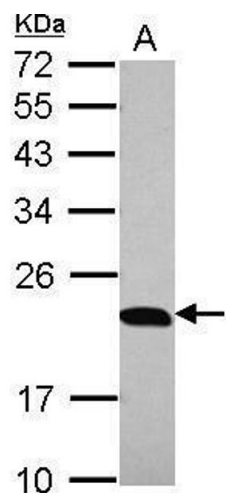
Immunohistochemistry

Image 1. IHC-P Image p23 antibody [N1C3] detects p23 protein at cytoplasm in mouse testis by immunohistochemical analysis. Sample: Paraffin-embedded mouse testis. p23 antibody [N1C3], diluted at 1:500.



Western Blotting

Image 2. WB Image Sample (50 ug of whole cell lysate) A: mouse brain 12% SDS PAGE antibody diluted at 1:5000



Western Blotting

Image 3. WB Image Sample (30 ug of whole cell lysate) A: 293T 12% SDS PAGE antibody diluted at 1:10000