

Datasheet for ABIN2856410

**anti-ITPA antibody****2** Images[Go to Product page](#)

## Overview

Quantity:	100 µL
Target:	ITPA
Reactivity:	Human
Host:	Rabbit
Clonality:	Polyclonal
Conjugate:	This ITPA antibody is un-conjugated
Application:	Western Blotting (WB), Immunohistochemistry (Paraffin-embedded Sections) (IHC (p))

## Product Details

Immunogen:	Recombinant protein encompassing a sequence within the center region of human ITPase. The exact sequence is proprietary.
Isotype:	IgG
Cross-Reactivity:	Human
Characteristics:	Rabbit polyclonal antibody to ITPase (inosine triphosphatase (nucleoside triphosphate pyrophosphatase)) ITPase antibody [N1C3]
Purification:	Purified by antigen-affinity chromatography.

## Target Details

Target:	ITPA
Alternative Name:	inosine triphosphatase ( <a href="#">ITPA Products</a> )

## Target Details

**Background:** The protein encoded by this gene hydrolyzes inosine triphosphate and deoxyinosine triphosphate to the monophosphate nucleotide and diphosphate. The encoded protein, which is a member of the HAM1 NTPase protein family, is found in the cytoplasm and acts as a homodimer. Defects in the encoded protein can result in inosine triphosphate pyrophosphorylase deficiency. Two transcript variants encoding two different isoforms have been found for this gene. Also, at least two other transcript variants have been identified which are probably regulatory rather than protein-coding.

Cellular Localization: Cytoplasm

**Molecular Weight:** 21 kDa

**Gene ID:** 3704

**UniProt:** [Q9BY32](#)

## Application Details

**Application Notes:** WB: 1:500-1:3000. IHC-P: 1:100-1:1000. Optimal dilutions/concentrations should be determined by the researcher. Not tested in other applications.

**Comment:** Positive Control: 293T , HepG2

**Restrictions:** For Research Use only

## Handling

**Format:** Liquid

**Concentration:** 1 mg/mL

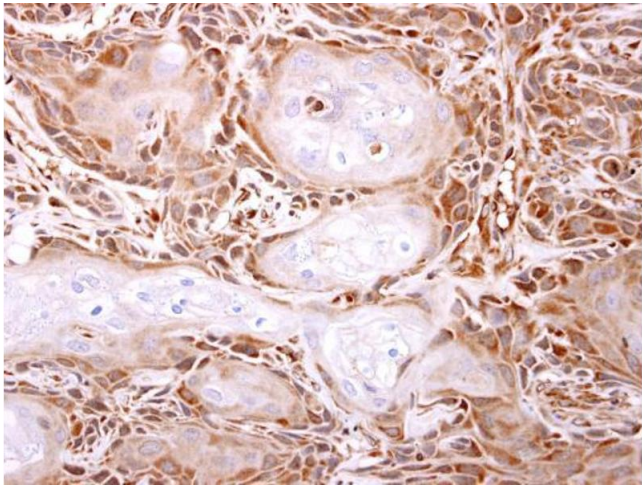
**Buffer:** 0.1M Tris-Glycine ( pH 7), 10 % Glycerol, 0.01 % Thimerosal

**Preservative:** Thimerosal (Merthiolate)

**Precaution of Use:** This product contains Thimerosal (Merthiolate): a POISONOUS AND HAZARDOUS SUBSTANCE which should be handled by trained staff only.

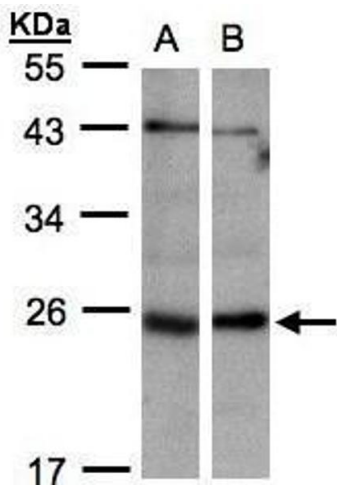
**Storage:** 4 °C,-20 °C

**Storage Comment:** Store as concentrated solution. Centrifuge briefly prior to opening vial. For short-term storage (1-2 weeks), store at 4°C. For long-term storage, aliquot and store at -20°C or below. Avoid multiple freeze-thaw cycles.



### Immunohistochemistry

**Image 1.** IHC-P Image ITPase antibody [N1C3] detects ITPase protein at cytosol on Ca922 xenograft by immunohistochemical analysis. Sample: Paraffin-embedded Ca922 xenograft. ITPase antibody [N1C3] , dilution: 1:500.



### Western Blotting

**Image 2.** WB Image Sample(30 ug whole cell lysate) A:293T B:Hep G2 , 12% SDS PAGE antibody diluted at 1:1000