



[Go to Product page](#)

Datasheet for ABIN2856413
anti-TMED7 antibody (Center)

1 Image

Overview

Quantity:	100 µL
Target:	TMED7
Binding Specificity:	Center
Reactivity:	Human
Host:	Rabbit
Clonality:	Polyclonal
Conjugate:	This TMED7 antibody is un-conjugated
Application:	Western Blotting (WB)

Product Details

Immunogen:	Recombinant protein encompassing a sequence within the center region of human TMED7. The exact sequence is proprietary.
Isotype:	IgG
Cross-Reactivity:	Rat (Rattus), Rhesus Monkey, Chimpanzee
Cross-Reactivity (Details):	Rat (100 %), Rhesus Monkey (100 %), Chimpanzee (100 %)
Characteristics:	Rabbit Polyclonal antibody to TMED7 (transmembrane emp24 protein transport domain containing 7) TMED7 antibody [N1C3]
Purification:	Purified by antigen-affinity chromatography.

Target Details

Target:	TMED7
Alternative Name:	TMED7 (TMED7 Products)
Background:	Cellular Localization: Endoplasmic reticulum membrane, Single-pass type I membrane protein
Molecular Weight:	25 kDa
Gene ID:	51014

Application Details

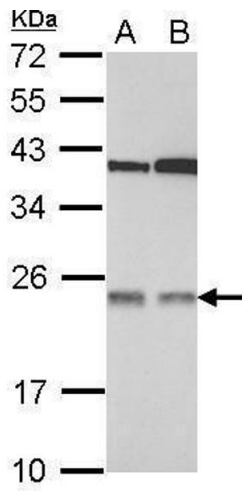
Application Notes: Suggested dilution Reference Western blot 1:500-1:3000* Not tested in other applications.
Optimal dilutions/concentrations should be determined by the researcher.Suggested dilutionReferenceWestern blot1:500-1:3000

Comment: Positive Control: 293T , A431

Restrictions: For Research Use only

Handling

Format:	Liquid
Concentration:	1 mg/mL
Buffer:	1XPBS, 1 % BSA, 20 % Glycerol (pH 7). 0.01 % Thimerosal was added as a preservative.
Preservative:	Thimerosal (Merthiolate)
Precaution of Use:	This product contains Thimerosal (Merthiolate): a POISONOUS AND HAZARDOUS SUBSTANCE which should be handled by trained staff only.
Storage:	-20 °C
Storage Comment:	Keep as concentrated solution. Aliquot and store at -20°C or below. Avoid multiple freeze-thaw cycles.



Western Blotting

Image 1. WB Image Sample (30 ug of whole cell lysate) A: 293T B: A431 12% SDS PAGE antibody diluted at 1:1000