



[Go to Product page](#)

Datasheet for ABIN2856415
anti-GID8/C20orf11 antibody (Center)

3 Images

Overview

Quantity:	100 µL
Target:	GID8/C20orf11 (GID8)
Binding Specificity:	Center
Reactivity:	Human
Host:	Rabbit
Clonality:	Polyclonal
Conjugate:	This GID8/C20orf11 antibody is un-conjugated
Application:	Western Blotting (WB), Immunohistochemistry (Paraffin-embedded Sections) (IHC (p)), Immunofluorescence (IF), Immunocytochemistry (ICC)

Product Details

Immunogen:	Recombinant protein encompassing a sequence within the center region of human C20orf11. The exact sequence is proprietary.
Isotype:	IgG
Cross-Reactivity:	Xenopus laevis
Cross-Reactivity (Details):	Xenopus laevis (96 %)
Characteristics:	Rabbit Polyclonal antibody to C20orf11 (chromosome 20 open reading frame 11) C20orf11 antibody [N1C3]
Purification:	Purified by antigen-affinity chromatography.

Target Details

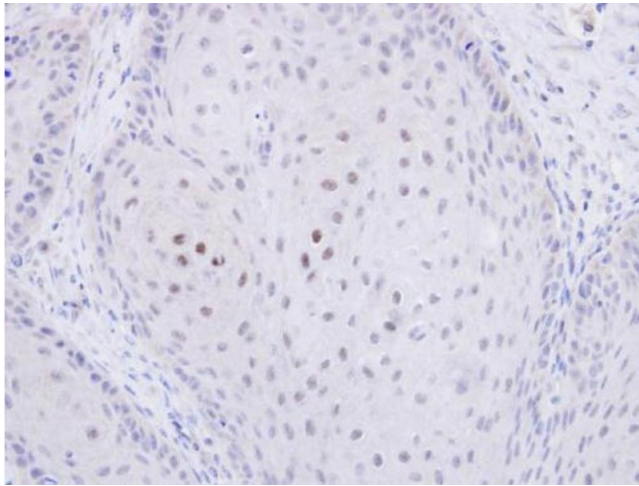
Target:	GID8/C20orf11 (GID8)
Alternative Name:	C20orf11 (GID8 Products)
Background:	Cellular Localization: Nucleus
Molecular Weight:	27 kDa
Gene ID:	54994

Application Details

Application Notes:	Suggested dilution Reference ICC/IF 1:100-1:1000* IHC (Formalin-fixed paraffin-embedded sections) 1:100-1:1000* Western blot 1:500-1:3000* Not tested in other applications. *Optimal dilutions/concentrations should be determined by the researcher.Suggested dilutionReferenceICC/IF1:100-1:1000* IHC (Formalin-fixed paraffin-embedded sections)1:100-1:1000* Western blot1:500-1:3000*
Comment:	Positive Control: 293T , A431 , H1299 , HeLaS3 , HepG2 , Molt-4 , Raji
Restrictions:	For Research Use only

Handling

Format:	Liquid
Concentration:	1 mg/mL
Buffer:	0.1M Tris, 0.1M Glycine, 10 % Glycerol (pH 7). 0.01 % Thimerosal was added as a preservative.
Preservative:	Thimerosal (Merthiolate)
Precaution of Use:	This product contains Thimerosal (Merthiolate): a POISONOUS AND HAZARDOUS SUBSTANCE which should be handled by trained staff only.
Storage:	-20 °C
Storage Comment:	Keep as concentrated solution. Aliquot and store at -20°C or below. Avoid multiple freeze-thaw cycles.



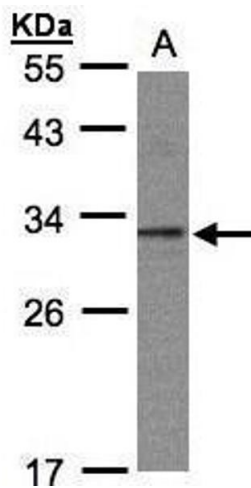
Immunohistochemistry

Image 1. IHC-P Image Immunohistochemical analysis of paraffin-embedded Cal27 xenograft, using C20orf11, antibody at 1:500 dilution.



Immunofluorescence

Image 2. ICC/IF Image Immunofluorescence analysis of paraformaldehyde-fixed HeLa, using C20orf11, antibody at 1:1000 dilution.



Western Blotting

Image 3. WB Image Sample(30 ug whole cell lysate) A:293T
12% SDS PAGE antibody diluted at 1:1000