

Datasheet for ABIN2856418

**anti-YIPF4 antibody****2** Images[Go to Product page](#)

## Overview

Quantity:	100 µL
Target:	YIPF4
Reactivity:	Human
Host:	Rabbit
Clonality:	Polyclonal
Conjugate:	This YIPF4 antibody is un-conjugated
Application:	Western Blotting (WB), Immunohistochemistry (Paraffin-embedded Sections) (IHC (p))

## Product Details

Immunogen:	Recombinant protein encompassing a sequence within the center region of human YIPF4. The exact sequence is proprietary.
Isotype:	IgG
Cross-Reactivity:	Human
Characteristics:	Rabbit Polyclonal antibody to YIPF4 (Yip1 domain family, member 4) YIPF4 antibody [N1C2]
Purification:	Purified by antigen-affinity chromatography.

## Target Details

Target:	YIPF4
Alternative Name:	Yip1 domain family member 4 ( <a href="#">YIPF4 Products</a> )

## Target Details

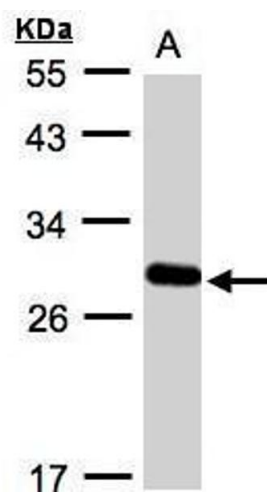
Background:	Cellular Localization: Membrane, Multi-pass membrane protein
Molecular Weight:	27 kDa
Gene ID:	84272
UniProt:	<a href="#">Q9BSR8</a>

## Application Details

Application Notes:	WB: 1:500-1:3000. IHC-P: 1:100-1:1000. Optimal dilutions/concentrations should be determined by the researcher. Not tested in other applications.
Comment:	Positive Control: A431
Restrictions:	For Research Use only

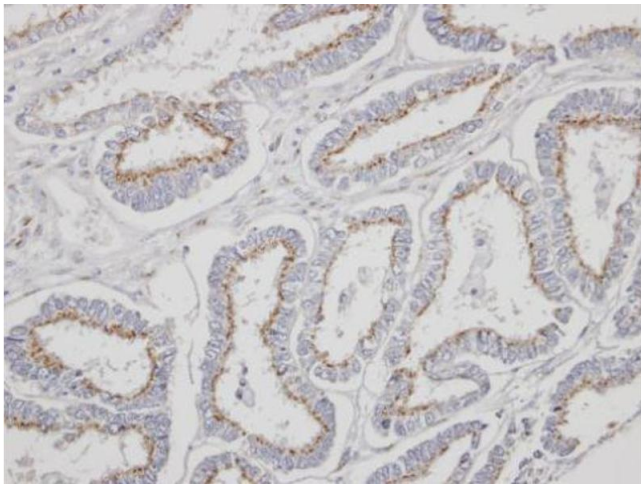
## Handling

Format:	Liquid
Concentration:	1 mg/mL
Buffer:	0.1M Tris-Glycine ( pH 7), 10 % Glycerol, 0.01 % Thimerosal
Preservative:	Thimerosal (Merthiolate)
Precaution of Use:	This product contains Thimerosal (Merthiolate): a POISONOUS AND HAZARDOUS SUBSTANCE which should be handled by trained staff only.
Storage:	4 °C, -20 °C
Storage Comment:	Store as concentrated solution. Centrifuge briefly prior to opening vial. For short-term storage (1-2 weeks), store at 4°C. For long-term storage, aliquot and store at -20°C or below. Avoid multiple freeze-thaw cycles.



#### Western Blotting

**Image 1.** WB Image Sample(30 ug whole cell lysate) A:A431, 12% SDS PAGE antibody diluted at 1:1000



#### Immunohistochemistry

**Image 2.** IHC-P Image Immunohistochemical analysis of paraffin-embedded human endometrial cancer, using YIPF4, antibody at 1:500 dilution.