



[Go to Product page](#)

Datasheet for ABIN2856419
anti-LIMD1 antibody (C-Term)

5 Images

Overview

Quantity:	100 µL
Target:	LIMD1
Binding Specificity:	C-Term
Reactivity:	Human
Host:	Rabbit
Clonality:	Polyclonal
Application:	Western Blotting (WB), Immunohistochemistry (Paraffin-embedded Sections) (IHC (p)), Immunofluorescence (IF), Immunocytochemistry (ICC)

Product Details

Immunogen:	Recombinant protein encompassing a sequence within the C-terminus region of human LIMD1. The exact sequence is proprietary.
Isotype:	IgG
Cross-Reactivity:	Human, Mouse
Characteristics:	Rabbit Polyclonal antibody to LIMD1 (LIM domains containing 1) LIMD1 antibody [C2C3], C-term
Purification:	Purified by antigen-affinity chromatography.

Target Details

Target:	LIMD1
Alternative Name:	LIM domains containing 1 (LIMD1 Products)

Target Details

Background: Transcriptional regulator that inhibits E2F-mediated transcription, and suppresses the expression of the majority of genes with E2F1-responsive elements. May act as a tumor suppressor by inhibiting cell proliferation.

Molecular Weight: 72 kDa

Gene ID: 8994

UniProt: [Q9UGP4](#)

Pathways: [Ribonucleoprotein Complex Subunit Organization](#)

Application Details

Application Notes: WB: 1:500-1:3000. ICC/IF: 1:100-1:1000. IHC-P: 1:100-1:1000. Optimal dilutions/concentrations should be determined by the researcher. Not tested in other applications.

Comment: Positive Control: Mouse brain , 293T

Restrictions: For Research Use only

Handling

Format: Liquid

Concentration: 1 mg/mL

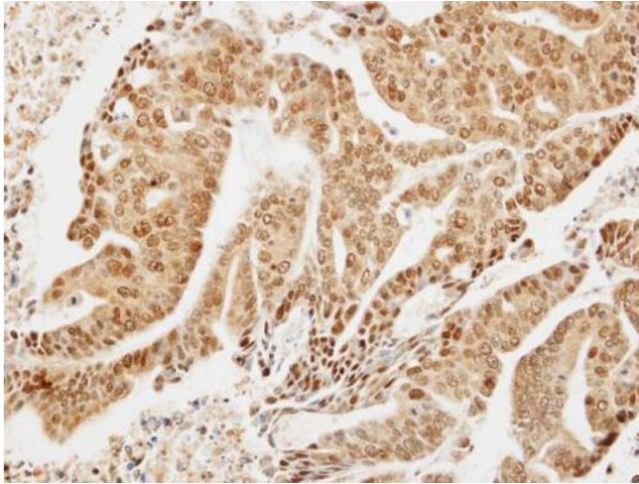
Buffer: 0.1M Tris-Glycine (pH 7), 10 % Glycerol, 0.01 % Thimerosal

Preservative: Thimerosal (Merthiolate)

Precaution of Use: This product contains Thimerosal (Merthiolate): a POISONOUS AND HAZARDOUS SUBSTANCE which should be handled by trained staff only.

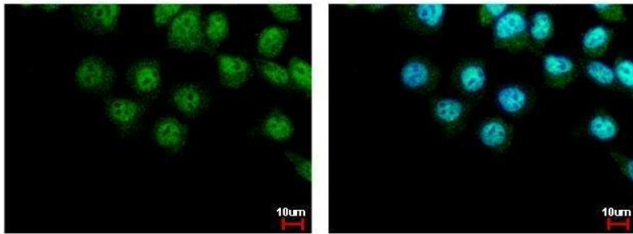
Storage: 4 °C,-20 °C

Storage Comment: Store as concentrated solution. Centrifuge briefly prior to opening vial. For short-term storage (1-2 weeks), store at 4°C. For long-term storage, aliquot and store at -20°C or below. Avoid multiple freeze-thaw cycles.



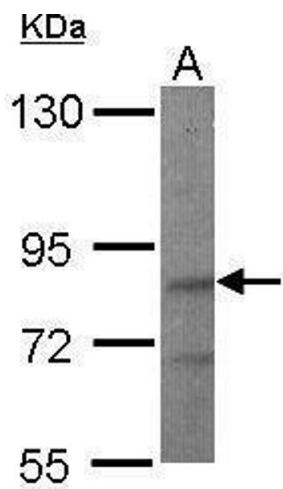
Immunohistochemistry

Image 1. IHC-P Image Immunohistochemical analysis of paraffin-embedded OVCA xenograft, using LIMD1, antibody at 1:300 dilution.



Immunofluorescence

Image 2. ICC/IF Image LIMD1 antibody [C2C3], C-term detects LIMD1 protein at cytoplasm and nucleus by immunofluorescent analysis. Sample: A431 cells were fixed in 4% paraformaldehyde at RT for 15 min. Green: LIMD1 protein stained by LIMD1 antibody [C2C3], C-term, diluted at 1:500. Blue: Hoechst 33342 staining.



Western Blotting

Image 3. WB Image Sample (50 ug of whole cell lysate) A: Mouse brain 7.5% SDS PAGE antibody diluted at 1:500

Please check the [product details page](#) for more images. Overall 5 images are available for ABIN2856419.