

Datasheet for ABIN2856420

**anti-CHMP5 antibody**

## 4 Images

[Go to Product page](#)

## Overview

Quantity:	100 µL
Target:	CHMP5
Reactivity:	Human
Host:	Rabbit
Clonality:	Polyclonal
Conjugate:	This CHMP5 antibody is un-conjugated
Application:	Western Blotting (WB), Immunofluorescence (IF), Immunohistochemistry (Paraffin-embedded Sections) (IHC (p)), Immunocytochemistry (ICC), Immunoprecipitation (IP)

## Product Details

Immunogen:	Recombinant protein encompassing a sequence within the center region of human CHMP5. The exact sequence is proprietary.
Isotype:	IgG
Cross-Reactivity:	Human, Mouse
Characteristics:	Rabbit Polyclonal antibody to CHMP5 (chromatin modifying protein 5) CHMP5 antibody [N1C3]
Purification:	Purified by antigen-affinity chromatography.

## Target Details

Target:	CHMP5
Alternative Name:	charged multivesicular body protein 5 ( <a href="#">CHMP5 Products</a> )

## Target Details

Background:	<p>CHMP5 belongs to the chromatin-modifying protein/charged multivesicular body protein (CHMP) family. These proteins are components of ESCRT-III (endosomal sorting complex required for transport III), a complex involved in degradation of surface receptor proteins and formation of endocytic multivesicular bodies (MVBs). Some CHMPs have both nuclear and cytoplasmic/vesicular distributions, and one such CHMP, CHMP1A (MIM 164010), is required for both MVB formation and regulation of cell cycle progression (Tsang et al., 2006 [PubMed 16730941]).[supplied by OMIM]</p> <p>Cellular Localization: Cytoplasm , cytosol , Endosome membrane, Peripheral membrane protein , Cytoplasm , cytosol , Endosome membrane</p>
-------------	--

Molecular Weight:	25 kDa
-------------------	--------

Gene ID:	51510
----------	-------

UniProt:	<a href="#">Q9NZZ3</a>
----------	------------------------

## Application Details

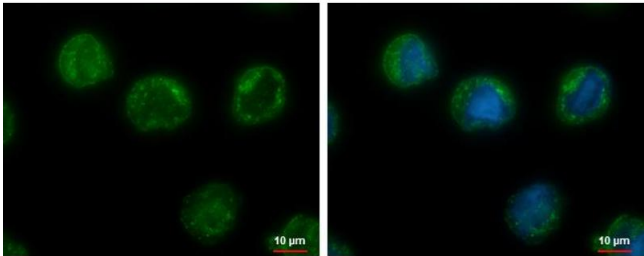
Application Notes:	WB: 1:500-1:3000. ICC/IF: 1:100-1:1000. IHC-P: 1:100-1:1000. Optimal dilutions/concentrations should be determined by the researcher. Not tested in other applications.
Comment:	Positive Control: 293T , A431 , H1299 , HeLaS3 , HepG2 Validation: Comparison, Orthogonal
Restrictions:	For Research Use only

## Handling

Format:	Liquid
Concentration:	0.7 mg/mL
Buffer:	0.1M Tris-Glycine ( pH 7), 10 % Glycerol, 0.01 % Thimerosal
Preservative:	Thimerosal (Merthiolate)
Precaution of Use:	This product contains Thimerosal (Merthiolate): a POISONOUS AND HAZARDOUS SUBSTANCE which should be handled by trained staff only.
Storage:	4 °C,-20 °C
Storage Comment:	Store as concentrated solution. Centrifuge briefly prior to opening vial. For short-term storage (1-2 weeks), store at 4°C. For long-term storage, aliquot and store at -20°C or below. Avoid

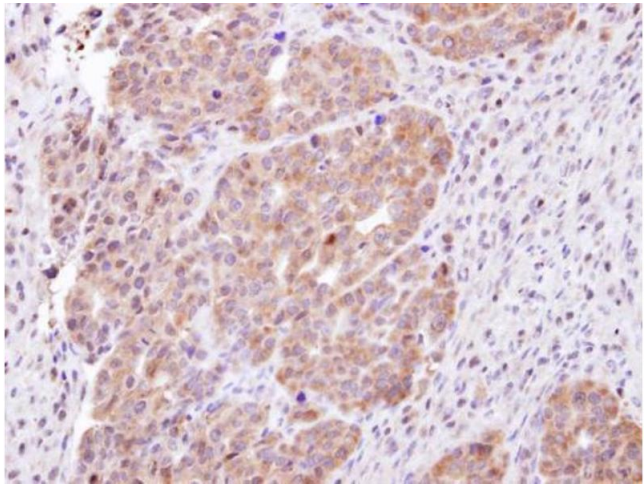
multiple freeze-thaw cycles.

Images



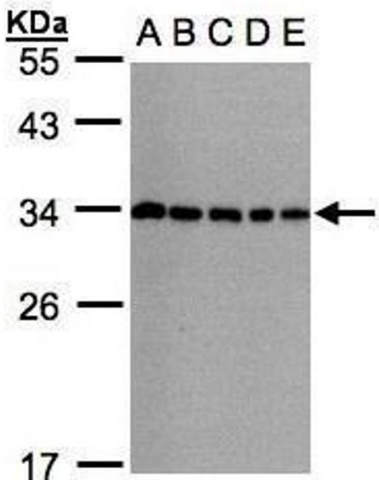
Immunofluorescence

**Image 1.** ICC/IF Image CHMP5 antibody [N1C3] detects CHMP5 protein at cytoplasm by immunofluorescent analysis. Sample: HL-60 cells were fixed in ice-cold MeOH for 5 min. Green: CHMP5 protein stained by CHMP5 antibody [N1C3] , diluted at 1:500. Blue: Hoechst 33342 staining.



Immunohistochemistry

**Image 2.** IHC-P Image Immunohistochemical analysis of paraffin-embedded NCIN87 xenograft, using CHMP5, antibody at 1:100 dilution.



Western Blotting

**Image 3.** WB Image Sample(30µg whole cell lysate) A: 293T B: A431 , C: H1299 D: HeLa S3 , E: Hep G2 , 12% SDS PAGE antibody diluted at 1:1000

Please check the [product details page](#) for more images. Overall 4 images are available for ABIN2856420.